



26th Season!
GreenStage.org

SHAKESPEARE in the PARK

July 11 - August 16, 2014

Seattle | Bainbridge Island | Burien | Fall City
Lynnwood | Normandy Park | Snohomish
Vashon Island



LOVE'S LABOUR'S LOST OTHELLO

directed by Vince Brady

directed by Teresa Thuman

Backyard Bard

THE COMEDY OF ERRORS • ALL'S WELL THAT ENDS WELL

directed by Marc "Mok" Moser



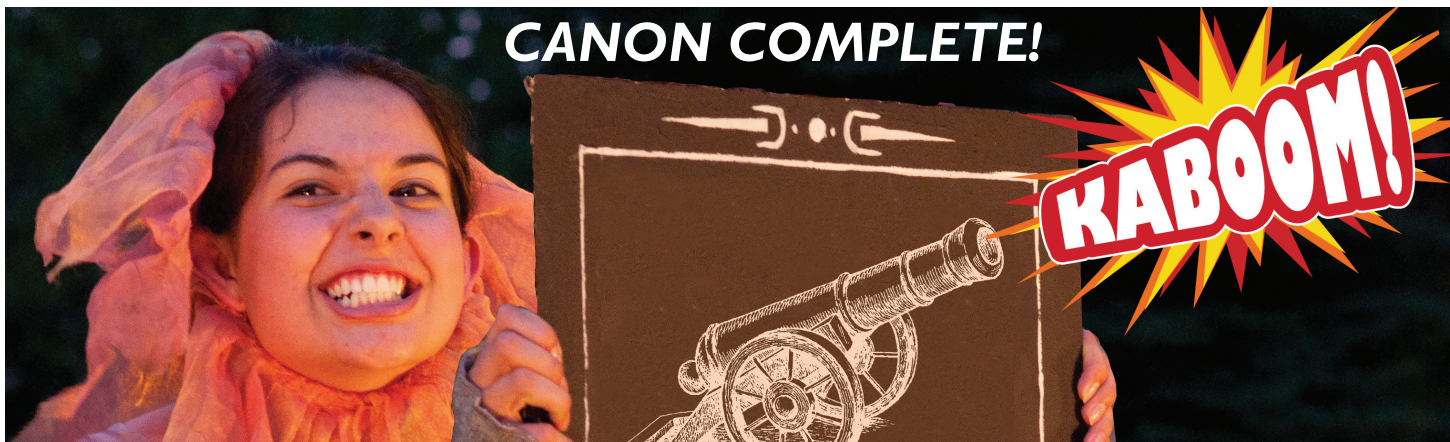
SPONSORS



MEDIA SPONSOR



CANON COMPLETE!



Welcome to GreenStage's 26th season of Shakespeare in the Park!

This summer we reach a long standing company goal: the completion of the Shakespearean Canon, plus a couple extra.

It is my belief, that better than anyone else, Shakespeare was able to express the essence of being human – an essence that has changed little, if at all, in the centuries since he first put his pen to paper. There is a richness and depth that reveals itself anew with each encounter with Shakespeare. We wanted to produce the entirety of the canon to find what riches lie buried there, to discover the life revealed in each play.

Many of the plays are rarely produced, indeed very few companies have completed the canon*; reasons for this vary, some plays are considered problems, or lacking in the virtuosity to make them palatable, or possess little audience

draw. Our experience with the plays tells us something quite different. Each of the plays challenges, reveals and teaches us something of our humanity. Are they worth doing? Absolutely!

A play cannot be fully expressed on the page, it needs a performance and an audience; and is completed by the presence, knowledge and experience of both. A play requires breath. Thank you for being part of this fabulous journey and for breathing life into these amazing works. Without you all is unfinished.

We are a community of souls gathered in this beautiful park to learn about ourselves, each other and all that is. Relax, look around and breathe.

– Erin Day, Artistic Director

* When Cincinnati Shakespeare was completing the canon, they hired a researcher to find out who else had accomplished this. They found that there are seven professional companies in the US on the list, and globally only two others. Of course, they may have missed something here and there, and their survey was only of currently active professional companies. But by that somewhat squishy list, GreenStage becomes the tenth company in the club! The other nine companies are: Royal Shakespeare Company (UK), Stratford Festival (Canada), Atlanta Shakespeare Company, Alabama Shakespeare, American Shakespeare Center (VA), Cincinnati Shakespeare Company, The Old Globe (CA), Oregon Shakespeare Festival, The Shakespeare Theater of NJ.

CANON FODDER

Here is the list of 39 plays we consider be part of Shakespeare's canon, and the years we produced them. How many plays on this list have you seen?

HISTORIES

- ✓ Henry IV, Part 1 ('00)
- ✓ Henry IV, Part 2 ('02)
- ✓ Henry V ('05)
- ✓ Henry VI, Parts 1, 2, and 3 ('06)
- ✓ Henry VIII ('12)
- ✓ King John ('09)
- ✓ Richard II ('98)
- ✓ Richard III ('07)

TRAGEDIES

- ✓ Antony and Cleopatra ('11)
- ✓ Cardenio ('12)
- ✓ Coriolanus ('04)
- ✓ Cymbeline ('97)
- ✓ Hamlet ('08)
- ✓ Julius Caesar ('97)
- ✓ King Lear ('13)
- ✓ Macbeth ('01, '10)
- ✓ Othello ('14)
- ✓ Romeo and Juliet ('90, '10)
- ✓ Timon of Athens ('99)
- ✓ Titus Andronicus ('95, '09)
- ✓ Troilus and Cressida ('01)

COMEDIES

- ✓ All's Well That Ends Well ('04, '14)
- ✓ As You Like It ('97, '10)
- ✓ The Comedy of Errors ('99, '09, '14)
- ✓ Love's Labour's Lost ('96, '14)
- ✓ Measure For Measure ('96)
- ✓ The Merchant of Venice ('03)
- ✓ The Merry Wives of Windsor ('03, '13)
- ✓ A Midsummer Night's Dream ('93, '94, '98, '06, '13)
- ✓ Much Ado About Nothing ('00)
- ✓ The Taming of the Shrew ('89, '02, '12)
- ✓ Pericles, Prince of Tyre ('95)
- ✓ The Tempest ('05, '11)
- ✓ Twelfth Night ('91, '92, '95, '08, '13)
- ✓ Two Gentlemen of Verona ('07)
- ✓ The Two Noble Kinsmen ('98)
- ✓ The Winter's Tale ('00)

Directors' Notes

LOVE'S LABOUR'S LOST

OTHELLO

The country of Navarre in *Love's Labour's Lost* is a mixing pot of clashing personalities, clashing cultures, clashing lifestyles and clashing philosophies.

The lords take a vow to study. Not because they want to gain knowledge of the world around them, but because they are afraid to face it. They speak in elegant, precious and self-conscious language because they are defending themselves against feeling.

It is clear from the beginning that the Princess and her ladies are not only from a different country, but of a different time. The women are far more mature and self-aware than the men. The ensuing discord between them is, however, but a facet of a much more profound clash which forms the central conflict, that between Art and Nature.

The English director John Barton, said *Love's Labour's Lost* "takes a highly conventional piece of Elizabethan artifice and shows Nature breaking through all the rules". So we could say that Shakespeare debates in this play whether the Art of the King's solemn oath can withstand the Nature of the Princess's eyes.

It can't!

But the speed at which the men break their vows makes the women justified in questioning their oaths of love. As the play builds to its conclusion, all the characters are brought together for the pageant of the Nine Worthies, which is abruptly halted in devastating fashion. This extraordinary ending leaves the audience to decide the fate of the characters. Shakespeare has deliberately created a sense of continuing action, or 'endlessness', truer to life and dramatically more satisfying than a conclusion in which all loose ends are tied up.

So welcome to Navarre! A place where cultures collide, opposites attract, sonnets are written (and sung!), games are played, vows are made and broken and made again, and those who would hide from the world are taught that in order to grow and move forward they must learn to live in it.

Enjoy the show!

– Vince Brady

Today you are part of a monumental accomplishment: GreenStage becomes one of the few theatre companies in the world to present the complete canon of plays attributed, all or in part, to William Shakespeare. It is an honor to be helming this production, the culmination of a twenty-six-year goal and the final step of this massive achievement for a theatre company I cherish. It is also one of the most astonishing plays I have had the privilege to direct and resonates deeply with me in many ways.

*"This fellow's of exceeding honesty,
And knows all qualities, with a learned spirit
Of human dealings." - Othello, 3.3.*

This passage captures one of the many tragedies of *Othello* as Iago, one of the great villains in dramatic literature, turns his brilliance of subtle human understanding towards his own vengeful, sociopathic ends. We witness this brilliant Machiavel systematically unravel a towering figure at the height of his professional and personal power. By exploiting a deep vulnerability, this confident, triumphant and respected military leader, giddy with the joy of true love, is impossibly driven to delusion, neurosis, shattering self-doubt and ultimately –tragically– brutal violence towards the one he loves the most. This accessible and timeless tragedy weaves contemporary issues of misogyny, bigotry, entitlement, psychological manipulation, revenge, and targeted violence with Shakespeare's keen insight into the plight of being "the other" in our society.

Yet it is the core issues of trust and honesty that resonate deepest with me. As theatre artists, we traffic in trust and a healthy society functions solely on this premise. Shakespeare's cautionary tale of the ability to perceive the "honesty" of others, even through the distortion of our own foibles, is essential in every aspect of our lives: as parents, partners, teachers, collaborators, citizens and leaders we must seek to be "trust-worthy." Trust is a fragile commodity: so hard won—and so easily lost.

– Teresa Thuman



Directors' Notes

Backyard Bard THE COMEDY OF ERRORS • ALL'S WELL THAT ENDS WELL

It has been said that the greatest thing we can achieve as artists is to help people feel less alone, to remind folks that we are a tribal species, and that moments spent with one another often speak to the greatest parts of who we are. These condensed Shakespeare plays, though dotted with the earmarks of brevity, allow us to connect with the best moments of Shakespeare's comedies and arrive at a place of poetic faith and gentle, joyful truth. This year's cast is tasked with bringing two very different plays into the light. *All's Well That Ends Well* is an amazing, brave, endearing story of love that is achieved in a very roundabout way. Helena is one of Shakespeare's most interesting heroines, and she is more like you or me than you might ever expect. *Comedy of Errors* is a rare opportunity for Shakespearean enthusiasts to "cut loose" and simply have as much fun as one can fit into the time. Thank you for joining us today, for being part of this tribe, and for laughing, crying, and applauding with all the new friends by your side.

- Marc "Mok" Moser



All the world's a stage

We have companies looking
for great performers in
engineering and technology.

 **PROTINGENT**
TECHNOLOGY STAFFING EXPERTS

p 425 284 7777

www.protingent.com/greenstage



LOVE'S LABOUR'S LOST

Directed by Vince Brady

CAST – in alphabetical order

Kieran Adcock Starr..... Costard/Musician
Dale Bowers Holofernes
Jack Brady..... Musician
Taylor Davis Moth/Maria
Anthony Duckett..... Nathaniel/Dumaine
Matt Fulbright Ferdinand
Katherine Jett Rosaline
Amy Mayes Princess
Kendra Pierce Katharine/Jaquenetta
Joey Shaw Berowne
Tom Stewart..... Boyet
Sean Patrick Taylor Dull/Mercade/Musician
Sam Turner Longaville
Daniel Wood Don Armado



OTHELLO

Directed by Teresa Thuman

CAST – in alphabetical order

Libby Barnard Desdemona
Emily Feliciano Bianca/Ensemble
Ashley Flannegan Emilia
Adrian Cerrato Duke of Venice/Ensemble
Matt Jeakle Senator/Ensemble
Martyn G. Krouse Iago
Denny Le Montano/Ensemble
Laurie Nelson Roderigo
Johnny Patchamatla Othello
Craig Peterson Cassio
Michael Ramquist Brabantio/Gratiano/Ensemble
Eli Simons Lodovico/Ensemble

PRODUCTION TEAM

Sarah Ross..... Stage Manager
Janessa Styck..... Costume Designer
Carly Ann Worden..... Composer
Amy Johnson Choreographer
Ryan Spickard Fight Choreographer
Laura Garcia Prop Designer
Erin Mettling House Manager
Natalie Gress Tour Manager
Elisabeth Dennis..... Wardrobe Manager

James Enns..... Stage Manager
Elizabeth Power Costume Designer
Ryan Spickard Fight Choreographer
Laura Garcia Prop Designer
Lindsay Hop..... House Manager
Elisabeth Dennis..... Wardrobe Manager

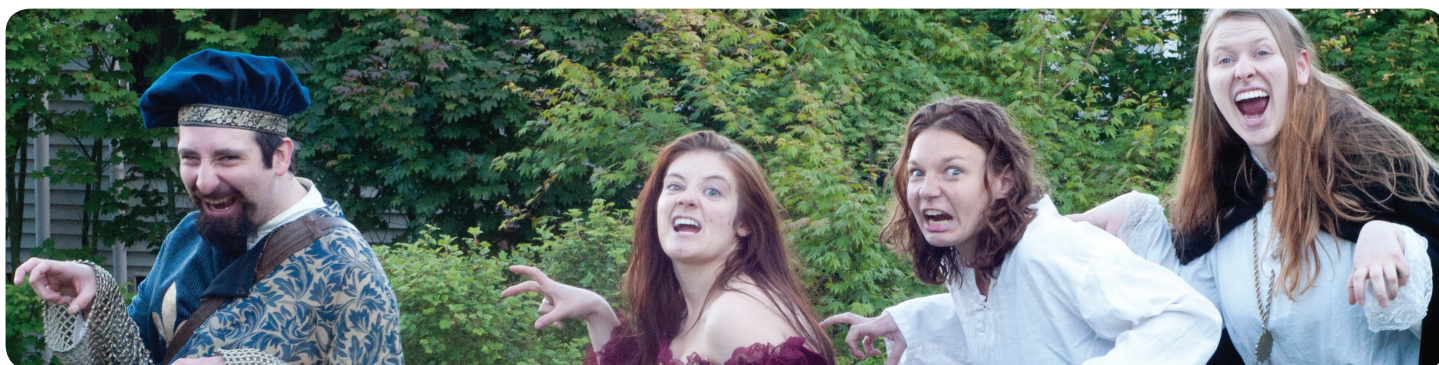
SPECIAL THANKS

Bartell Drugs • Devlin Donnelly • Tony Driscoll • Lee Ann Hittenberger • Jeff Hodges • Lisa Holmes •
Dan Iverson • Chelsea Johnson Joanne Orsucci • Julianna Ross • Savage Color •
Jesse Smith • S.P.A.C.E. • Seattle Parks and Recreation • Jeff Taylor



Backyard Bard

directed by Marc "Mok" Moser



ALL'S WELL THAT ENDS WELL

If you could marry anyone you wanted, would you? SHOULD you? Follow the adventures of the heroic Helena, as she discovers that a love as bright as all the stars, as true as sunlight through clouds, as magical as birdsong after rain can still be obscured by one young man's pride.

THE COMEDY OF ERRORS

Beautiful Ephesus, simply the finest destination in all of Europe! It's a truly amazing place to raise a family, build a business, accumulate wealth, and make wonderful friends! Why not contact your travel agent today, and learn how a trip to Ephesus can change your life?

NOTE: IF YOU HAVE AN ESTRANGED TWIN SIBLING, DO NOT UNDER ANY CIRCUMSTANCES VISIT EPHEBUS. YOUR TWIN'S ACTIONS WILL CAUSE YOUR LIFE TO FALL ENTIRELY APART.

CAST - in alphabetical order

Ty Bonneville	
All's Well That Ends Well	Helena
Comedy of Errors	Luciana/Balthazar
Chris Martinez	
All's Well That Ends Well	Bertram/Lafeu
Comedy of Errors	Antipholus
Anna Richardson	
All's Well That Ends Well	Countess/King/Widow
Comedy of Errors	Adriana/Angelo
Helen Roundhill	
All's Well That Ends Well	Parolles/Diana
Comedy of Errors	Dromio

Production Team

Lisa Harrington	Rehearsal Stage Manager
Natalie Schmidt	Assistant Director / Touring Stage Manager
Elisabeth Dennis	Costume Designer
Laura Garcia	Prop Designer



Simple Summaries of the Summer Shows



LOVE'S LABOUR'S LOST

The King of Navarre and his three lords, Berowne, Longaville, and Dumaine, swear a solemn oath to scholarship, which includes avoiding contact with women for three years. When the Princess of France and her train (Rosaline, Katherine, and Maria) arrive – wishing to speak to the King regarding political matters – they are forced to set up camp outside Navarre's castle due to the oath. Of course, when the lords finally meet the ladies, all quickly fall in love, and that oath is no longer so solemn.

Don Armado, a visiting Spaniard, catches the fool Costard and a country wench, Jaquenetta consorting in the park, and immediately falls in love with Jaquenetta. Don Armado writes a letter to her, which is then confused with a letter written by Berowne for Rosaline. It takes the efforts of two learned men, Holofernes and Sir Nathaniel, to decipher the love letter.

When the King and his lords discover that all have broken their oath, they decide to court the women disguised as Muscovites. The women are warned by Boyet, a lord traveling with them, to switch favors to play a prank on the men.

When the disguises and pranks are all confessed, the lovers watch a play about the Nine Worthies, legendary men who are icons of chivalry. The show is interrupted when a messenger arrives and "our wooing doth not end like an old play."



OTHELLO

On the street in Venice outside Brabantio's house, we meet Iago talking with Roderigo, a rich man, who has been courting Brabantio's daughter, Desdemona. Iago informs Roderigo that Desdemona has secretly wed Othello, and convinces him to wake Brabantio with the secret. As Brabantio goes to accuse Othello, word comes that the Turks are invading Cyprus. Brabantio brings his suit against Othello in front of the Duke and assembled senate, who sympathize with Othello, before sending him to war in Cyprus.

Cassio, Othello's newly appointed lieutenant, is the first to arrive in Cyprus after a storm destroys the Turkish fleet. Othello arrives with his new bride, meets the governor of Cyprus, Montano, and announces reveling. During the party, Iago counsels Roderigo to disgrace Cassio by starting a fight, and Othello strips Cassio of his rank.

Iago counsels Cassio to beg forgiveness of Othello through Desdemona. Upon catching Cassio and Desdemona together, Othello starts to believe the two are having an affair. A handkerchief, once given to Desdemona by Othello, makes its way into Cassio's hands, furthering suspicions.

When Lodovico arrives with a letter calling Othello back to Venice, he finds friendships much changed. "You are welcome, sir, to Cyprus - Goats and monkeys!"



Youth Summer Camps for kids ages 8-15

July 15-August 16

**Queen Anne Community Center
Magnuson Park Community Center
Volunteer Park**

Kids take a week-long journey into the world of Shakespeare and theatre as they delve into one of the Bard's best plays! Great for aspiring actors.

All levels of experience are welcome!
GreenStage.org/camp

DO IT THE BARD WAY!



Green Stage

Green World

Green Medicine



23andMe

Natural DNA Solutions Genetic Health Reports

We are 50% Nature and 50% Nurture. Nurture your DNA Nature by understanding and supporting your healthy genes.

It starts with a Natural DNA Solutions analysis.

Tom Ballard, RN, ND

Author of *Nutrition-1-2-3*
As you like it for 30 years

www.NaturalDNASolutions.com

LOVE'S LABOUR'S LOST CAST



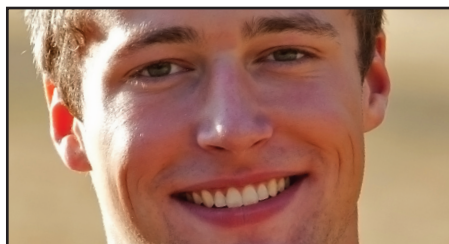
Kieran Adcock Starr
(Costard/Musician)

Kieran is excited to be making his GreenStage debut in *Love's Labor's Lost*. He hails from St. Paul, Minnesota, where he has also performed Shakespeare in the parks – albeit in 95 degrees with 100% humidity during a thunderstorm. So actually he's downright ecstatic to be in here with GreenStage. In Minnesota, his favorite shows included roles in *A Midsummer Night's Dream*, *The Tempest*, *The Woman in Black*, and *Hot L Baltimore*. Here in Seattle, he's appeared as Bottom in *Midsummer* with Rogue Theatrics, Cassius in *Julius Caesar* with Handwritten Productions, and Father Bojovic in *Pentecost* at the University of Washington. Thanks to the cast, crew, and audience – without whom none of this would be possible. And love as ever to Leah, his Starr and guiding light.



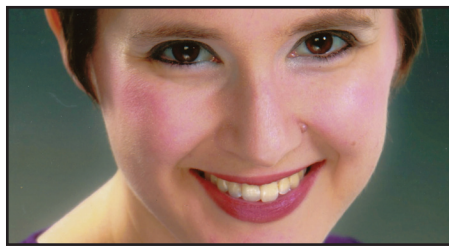
Dale Bowers
(Holofernes)

Dale is thrilled to be "playing in the park" with GreenStage this summer. Other recent Shakespeare credits include *Richard III* at Intiman directed by Bartlett Sher, *Taming of the Shrew* and *Love's Labour's Lost* at Seattle Shakespeare Company. Favorite roles include: Colonel Gilweather in *Something's Afoot* at Taproot, Fagin in *Oliver!* at Snoqualmie Falls Forest Theatre and Colonel Pickering in *My Fair Lady* at Second Story Rep. Dale has a Master's Degree in Theatre from Washington State University. He resides in Maple Valley with his actress/wife Carrie where he directs the fall plays at Tahoma High School. Many thanks to his biggest fans: Carrie, Rachel, Shane, Jackie and Roger.



Jack Brady
(Musician)

Jack is very excited to be joining GreenStage for the first time this summer. Most recently he has performed with Liberty Jazz Band at Jazz Alley and Triple Door. He was also a percussionist for *Assassins* at Village Theater. Jack is a founding member and drummer of the indie band 4 1/2.



Taylor Davis
(Moth/Maria)

Taylor is overjoyed to be returning to GreenStage! She received a BFA in Musical Theatre from the University of Oklahoma and loves to perform, direct, and choreograph around Seattle! Her favorites include Puck in *A Midsummer Night's Dream*, Bacchae in *The Bacchae* (GreenStage), Soupy Sue in *Urinetown* (Renton Civic), Future/Rose/Jane in *A Christmas Carol* (SecondStory Rep), Victoria in *The Grimaldis: A Musical Ghost Story* (Hale's), Kate in *The Taming of the Shrew*, Queen Anne in *Richard III* (OSP), Penelope in *See How They Run* (Valley Center Stage), Estrella in *Life is a Dream* (City Theatre), Fredrika in *A Little Night Music* (OU), director for *Closer* (Orasai), and choreographer for *Godspell* (Evergreen Family Theatre). Much love to her family, friends, and this amazing cast!



Anthony Duckett
(Nathaniel/Dumaine)

Anthony is excited and delighted to return to the stage, ahem, the parks after collaborating with GreenStage as Arthur in *King John*, Trinculo in *The Tempest*, Anselmus in *Cardenio* and Cornwall in *King Lear*. Recently, Anthony performed with Theater Schmeater in *The Twilight Zone*. Other select credits include Cain in *Creation of the World and Other Business* at Theater Schmeater, at Open Circle Theatre in *Arcana* and the *Eat My Shorts* short play festival, and Nelson in *End Days* at Seattle Public Theater. He has also been seen locally on the stages of Book-It Repertory Theatre, Second Story Rep, Theater Simple, ACT, Stone Soup Theatre, Eclectic Theatre, and more. Anthony is a 2008 Cornish grad and loves bowling, shower singing and general mischief.



Matt Fulbright
(Ferdinand)

Matt is thrilled to be performing this season in his fourth GreenStage show. Matt has called Seattle his home for the last four years, and at the end of August will be relocating to London, England to earn an MA in Acting from the Royal Central School of Speech and Drama. Matt couldn't be happier his last show in Seattle will be a GreenStage show. Past credits include *Holiday of Errors*, *Wild Party!*, and *The Illusion* (Sound Theatre Company), *Hotel on the Corner of Bitter and Sweet* (Book-It Repertory), *Picasso at the Lapin Agile* and *Chicago* (Second Story Rep) and *The Tempest*, *The Revenger's Tragedy*, and *The Bacchae* (GreenStage). Love to Mom, Dad, Sarah, and Elinor.



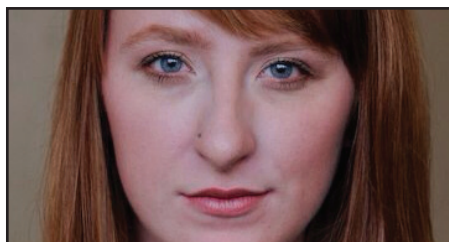
Katherine Jett
(Rosaline)

Katherine is thrilled to be making her GreenStage debut. She was most recently seen in Confrontational Theatre Company's production of *Starling*, a new play by Julia Nardin and Samm Murphy. Other Seattle area credits include *The Merry Wives of Windsor* (Seattle Shakespeare Company) and two traditional English pantomimes with Centerstage Theatre. Originally from Tennessee, she spent three years as a resident actor at the Renaissance Center, an arts facility just outside her hometown of Nashville. Credits there include *Romeo and Juliet* (Juliet), *A Chorus Line* (Morales), *Lend Me a Tenor* (Maggie), *The Miss Firecracker Contest* (Popeye), *Guys and Dolls* (Sarah Brown), and *Cats* (Demeter). Katherine is a co-creator, writer, and actor for the new webseries *Imaginary Friends* with trashtaco productions.



Amy Mayes
(Princess)

Amy is an Arkansas native whose cowboy boots are well versed in the rain. A graduate of Cornish College of the Arts, some of her favorite stage roles include Helena in Lisa Houston's *A Midsummer Night's Dream*, Jane Bennet in Jane Jones' *Pride and Prejudice*, Nurse in Book-it-Repertory Theatre's *The Art of Racing in the Rain*, Bee Bee in Quiet's *Suburbia*, and Lou Anne in *Peach Tree Parables*. Amy can also be found alongside Katherine Jett in the webseries *Imaginary Friends*. She would like to thank GreenStage for letting her play with them this summer. She sends much love to her all her friends, family, and husband!



Kendra Pierce
(Katherine/Jaquenetta)

Kendra is thrilled to be a part GreenStage's Shakespeare in the park for the first time! Kendra has acted and choreographed for amazing theater companies such as Theater Schmeater, Quiet, Woodenville Rep, Performers Forge, Confrontational Theatre Project, and BAT. She has a BFA in theatre from Cornish College of the Arts. Kendra has been having an absolute blast working with this extremely talented and silly cast and crew. She would like to thank her friends and family for being there for her and supporting her career. Love you guys!



Joey Shaw
(Berowne)

Joey Shaw is a Seattle-born actor and musician with a BA in Drama from the University of Washington (2012). Some favorites from university: *Hair*, *Macbeth*, *Harp Song for a Radical*, and *The 25th Annual Putnam County Spelling Bee*. Joey was honored to be Shakespeare Walla Walla's 2012 Todd Jamieson Journeyman, playing Tybalt in *Romeo & Juliet*. He then appeared in *Antony and Cleopatra* with Seattle Shakespeare Company. Following a bountiful year abroad, he spent this January-February in Memphis, playing Romeo for Tennessee Shakespeare Company. He recently appeared in *The Horse in Motion*'s inaugural production, *Martin Crimp's Attempts on Her Life*. Joey will be writing music for –and performing in Seattle Shakespeare Company's upcoming *Twelfth Night*. Here he makes his GreenStage debut!



Tom Stewart
(Boyet)

Tom Stewart is an actor, writer and playwright. Recent roles include Otto in *Starling*, Iago in *Black Vengeance* for Ghost Light, John in *Fifth of July* for Theate22, Jack Mann in the *Beebo Brinker Chronicles*. He has two books coming out this year and you should buy them. His current project is a show about the final campaign of Bobby Kennedy. In his spare time, he likes to write short bio pieces in the third person.



Sean Patrick Taylor
(Dull/Mercade/Musician)

Sean is pleased finally to be making his GreenStage debut. He has often performed Shakespeare in the park with Wooden O, most recently in *The Winter's Tale*, and indoors with Seattle Shakespeare Company, including *The Merry Wives of Windsor*, *Twelfth Night*, and *All's Well That Ends Well*. He also provided the translations of *A Doll's House* and *Cyrano de Bergerac* for SSC. Other local credits include performances with Kollektor, Balagan, Annex and Pony World, and teaching medieval and renaissance literature through the Creative Retirement Institute, as well as UW Extension.



OTHELLO CAST



Sam Turner
(Longaville)

Sam is a graduate from Western Washington University's theatre and teaching programs and is honored to be a newcomer to GreenStage this year. He is delighted to be a fresh Seattlite and be working with such talented artists. Previous credits include Slender in *Merry Wives of Windsor* (Idaho Repertory Theatre), Villager in *Aladdin* (Centerstage Theatre), JP in *Where I'm Calling From* (Olympia Film Collective), Ned/Walker in *Three Days of Rain*, The Cat in the Hat in *Seussical*, and Orsino in *Twelfth Night* (Western Washington University). A special thank you to his family for all their support in his crazy career choices, to Troy for his strength, and to Vince for his grace.



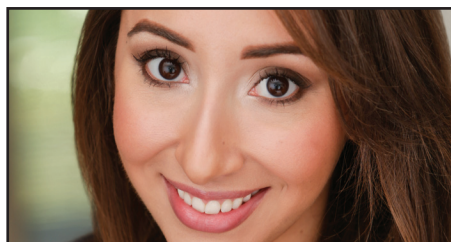
Daniel Wood
(Don Armado)

This is Daniel's fourth summer in a row performing with GreenStage and he couldn't be happier. Previous GreenStage roles include Edgar in *King Lear*, Buckingham in *Henry VIII*, Hippolito in the *HARD BARD The Revenger's Tragedy* and Stephano in *The Tempest*. Other favorite roles include Benedick in *Much Ado About Nothing* (SecondStory Rep), Max in *Lend Me a Tenor* (Centerstage) and the title role in *The American Pilot* (Theater Schmeater). He has also performed with Wooden O, Book-It Rep, Seattle Public Theater, Balagan Theatre, Sound Theatre Company, Annex Theater, Macha Monkey, Harlequin Production and the Seattle Opera. He is the founder and Artistic Director of The Rogues Gallery, a theater dedicated to performing plays with geek themes. Look out for our inaugural production, Cameron McNary's *Of Dice and Men* in February. Much love to his beautiful wife, Julia Evanovich.



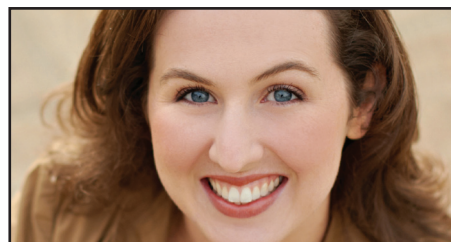
Libby Barnard
(Desdemona)

Libby has most recently been seen as Infanta Juana in *The Hunchback of Seville* at Washington Ensemble Theatre. Some of Libby's favorite roles include Sammie in *Azetrope's 25 Saints*, June in *Collision Project's Marisol*, Masha in WET's *The Fairytale Lives of Russian Girls*, and Lily in *Stephanie Timm's Sweet Nothing*. In Seattle, Libby has worked with Wooden O, Book-It Repertory Theatre, Theater Schmeater, Annex Theatre, Balagan Theatre and many more. Regionally, Libby worked two seasons with the Oregon Shakespeare Festival as an understudy, appearing in *All's Well That Ends Well*, *Henry VIII*, *The Comedy of Errors*, and *The Music Man*. Libby received her BA Summa Cum Laude in Theatre Performance with a minor in Shakespeare Studies from Southern Oregon University in Ashland, Oregon.




Emily Feliciano
(Bianca/Ensemble)

Emily is beyond ecstatic to be playing Bianca in this incredible production of *Othello*. This is her first show with GreenStage and she couldn't ask for a better team to be adventuring with. Emily holds her degree from Seattle Pacific University where she studied Theatre and Communications. When not acting, she works for POP, a digital design agency, and is grateful for her co-workers putting up with her antics. A warm and fuzzy thanks to her friends and family for constant love and support. Glitter and be free.



Ashley Flannegan Russell
(Emilia)

Holy Smokes! This is Ashley's fourth summer working with GreenStage, and she is giddy to be returning this summer to play Emilia. When she is not slinging Shakespeare in the Seattle parks, Ashley can usually be found doing improv with Unexpected Productions where she is an ensemble member. Thanks to Teresa for her faith and vision, the cast and for such a fabulous process and Liam for keeping us all in line! Special shout out to Ashley's own "Man of the Match" who puts up with the crazy, encourages the improbable and still smiles whenever she walks in the room.



SHAKESPEARE NORTHWEST
PROUDLY PRESENTS THE
2014 SKAGIT RIVER
SHAKESPEARE FESTIVAL

~~~~~

**MACBETH**

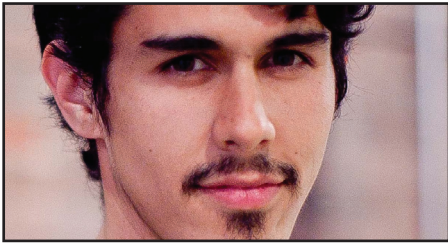
**MUCH ADO**

**ABOUT NOTHING**

**JULY 10 - AUG 16**

**REXVILLE-BLACKROCK**  
**AMPHITHEATRE MOUNT VERNON**

TIX/INFO: [WWW.SHAKESNW.ORG](http://WWW.SHAKESNW.ORG)



**Adrian Cerrato**

(Duke of Venice/Ensemble)

Adrian is honored to be making his GreenStage debut, and equally honored and thrilled to be returning to Shakespeare! Adrian was previously seen as the Dad in *Knuffle Bunny* at Secondstory Repertory Theatre, as Ziggy in *Young Frankenstein* at Burien Actors Theatre, and Greg in *A Chorus Line* at Bainbridge Performing Arts. His favorite roles include Troilus in Handwritten Production's mount of *Troilus and Cressida*, the Beast in Charles Way's *Beauty and the Beast* at Secondstory Repertory Theatre, and Victor Frankenstein in Burien Actors Theatre's production *Frankenstein*. Adrian received his BA in Drama at the University of Washington.



**Matt Jeakle**

(Senator/Ensemble)

Matt is proud to be making his debut with GreenStage's Shakespeare in the Park! Favorite credits include *Don Quixote*, (Don Quixote), *You Can't Take it with You* (Martin Vanderhoff), *Crazy for You* (Bela Zangler) and *A Midsummer Night's Dream* (Francis Flute) throughout his career at Seattle Preparatory School. Most recently he took center stage in Ram's Head Theatrical Society's *There's a Cool Grass Shaking Your Thought*. He's also done radio voice talent, corporate video and episodic web series work. Matt just finished his freshman year at Stanford University where he also performs regular stand up comedy working diligently as Stanford's last liberal arts major.



**Martyn G. Krouse**

(Iago)

Martyn is delighted to be helping to bring free outdoor Shakespeare to Seattle parks this summer in his first show with GreenStage. A Seattle-based actor and voiceover artist, Martyn has been seen in acclaimed productions at several Seattle theaters including *Richard II* with Seattle Shakespeare Company, *The Edge of Our Bodies* with Washington Ensemble Theatre, and *Dogg's Hamlet, Cahoot's Macbeth* with Sound Theatre Company among many others. He has also appeared in a number of feature films, including *A Bit of Bad Luck*, and on the network television show, *Grimm*. He lives in Columbia City with his partner Amy-Ellen, his daughters Mary Rose and Amelia, and their leopard gecko, Sam.



**Denny Le**

(Montano/Ensemble)

Denny is ecstatic to be making his GreenStage debut with the show that will round out the Bard's canon! He is currently a student at the University of Washington studying Drama Performance and Musical Theatre. He would like to send a HUGE "Thank You!" to Darren Lay who mentored Denny in Shakespeare every summer break during high school through the Young Shakespeare Workshop. Denny's credits with YSW include: Henry Bullingbrook in *Richard II*, Prince Don Pedro in *Much Ado About Nothing*, and Brabantio in *Othello*. Much love to mom, grandma, and the Robersons, his second family! Enjoy the show!



**Laurie Nelson**

(Rodrigo)

Laurie was born and raised in Sheffield, England. He trained at Richmond Drama School and East 15 Acting School, both in London, and the American Academy of Dramatic Arts in New York. This is his first production with GreenStage.



**Johnny Patchamatla**

(Othello)

Johnny is blessed and grateful to play a part in the performance we give you today, not only with some of the most gifted artists he has had the honor of working with but also some of his most beloved friends. Previous GreenStage credits include: York in *Henry VI, parts I,II,III*; Lucius in *Titus Andronicus*; and Kent in *King Lear*. Johnny extends his most sincere thanks to Teresa for giving him another crack at the Moor and to you, long time and newer supporters of the local arts scene, whose love and generosity is what enables us to come back, year after year. The GreenStage mission is simple – to make quality, classic theater accessible to everyone – and you are why we can! Love to Ronnie.

**go see a play!**



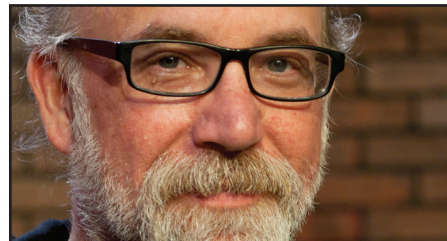
**Craig Peterson**  
(Cassio)

Craig is happy to be making his GreenStage debut. He was last seen in Seattle Shakespeare Company's *King Lear*. Other local credits include, ACT, Book-It Repertory and Seattle Children's Theatre. In NYC favorite shows include, *Take Me Out* with Gallery Players, *One Flew Over The Cuckoo's Nest* with Ensemble Theatre, *Entertaining Mr Sloan* at Secret Theatre and *Merlin* in *King Arthur Project Educational Theatre*, national tour. Proud graduate of The Neighborhood Playhouse School of The Theatre.



**Michael Ramquist**  
(Barbantio/Gratiano/Ensemble)

Michael has kept busy over the last year, appearing as Quince/Egeus in last summer's *A Midsummer Night's Dream* and Cadmus in *The Bacchae* for GreenStage. Next he undertook *Marley/Ghost Of Christmas Present* in *A Christmas Carol* for Second Story Rep. In the spring he was seen as Carr Gomm in *The Elephant Man* for StageRIGHT. Returning to the parks for this production of *Othello* is a great joy and Michael wishes to thank GreenStage and director Teresa Thuman for including him.



**Eli Simons**  
(Lodovico/Ensemble)

Eli is super elated and proud to be spending his Summer in the Parks with GreenStage and You! Eli has been involved in over twenty GreenStage productions and was last seen (though mostly heard) playing music in Theresa Thuman's amazing interpretation of *The Bacchae*. Thank you so much for being part of this experience. Much Love to Dad and Mary Lynn!

## BACKYARD BARD CAST



**Ty Bonneville**  
(Helena - *All's Well*)  
(Luciana/Balthazar - *Comedy of Errors*)

Ty is very excited to be working with GreenStage for the first time this summer. A graduate of Cornish College of the Arts with an emphasis in musical theatre, she was most recently seen in Infinity Box Theatre's reading of *Truth and Lies*, Seattle Musical Theatre's *A Christmas Carol*, Handwritten Productions, *Julius Caesar*, Lungfish Productions first original script, *The Mermaid Man*, and *All in the Timing* with StageRight. A signer, fight choreographer, and aerialist, Ty is already filling up her schedule with shows in the fall, and is grateful to everyone for coming to see the show.



**Helen Roundhill**  
(Parolles/Diana - *All's Well*)  
(Dromio - *Comedy of Errors*)

Helen is pleased to be joining the GreenStage tribe this year having enjoyed watching in the past. Some of her favourite credits include Elizabeth in *Young Frankenstein* and Brooke in *Noises Off*, both at Burien Actors Theatre; Sarah in *Seven Brides for Seven Brothers* and Zaneeta in *The Music Man* with (Lyric Light Opera; and Laertes in *Hamlet* with Ghostlight Theatricals. In her spare time she also appears as the performer "IcyLondon IcyFrancis" making sure that the false eyelash and fake beard markets stay strong. She is ever grateful for the love and support of her friends and family. She does however continue to be suspicious of their willingness to go long stretches of time without seeing her while she's in rehearsal. Enjoy the shows!

  
TWEET ABOUT  
GREENSTAGE!



GET ON BOARD NOW FOR OUR SILVER JUBILEE SEASON | [BOOK-IT.ORG](http://BOOK-IT.ORG)

## PRODUCTION TEAM



**Anna Richardson**

(Countess/King/Widow - *All's Well*)

(Adriana/Angelo - *Comedy of Errors*)

Anna is thrilled to return to GreenStage's Backyard Bard production after appearing in the first Backyard Bard last year. Some of her indoor credits include *Troilus and Cressida*, *How to be Cool*, and *Jesus Christ Superstar*. She also appear in Harlequin's *Gloucester Blue* last year and the one-woman pirate show *Bold Grace*. As always, it's an honor to work with so many talented, passionate people. Thanks to Mom, Dad, Emma, and Adam for their unending love and support.



**Chris Martinez**

(Bertram/Lafeu - *All's Well*)

(Antipholus - *Comedy of Errors*)

Christopher is joining Green Stage for a second go around, appearing last time in *Taming of the Shrew*. Since then you may have seen Christopher in Ghost Light Theatricals *Rope and Life is a Dream*. He also took part in last year's Bumbershoot as part of Performer's Forge's *Swashbuckling Spectacular*. Christopher holds a BFA in acting and has completed conservatory training at The Pacific Conservatory of Performing Arts. Christopher would like to thank his friends and family for their support, and Mok and everyone at GreenStage for letting him take part in the fun.

**Vince Brady**

(Director – *Love's Labour's Lost*)

Vince is thrilled to be back with GreenStage after performing *King Lear* for them last season. He was born in Liverpool, England and worked as an actor and director in the UK and Europe before settling in the Pacific Northwest. While in England he studied with Barbara Houseman (RSC and Shakespeare's Globe) and Patrick Tucker (RSC, Original Shakespeare Company and Shakespeare's Globe). Since moving to Seattle he has had the pleasure of working with many wonderful organizations including Seattle Shakespeare Company, Wooden O, Harlequin, Village Theater, SecondStory Rep and Centerstage. He also spent five years as Artistic Director of Exchange Theatre. Vince would like to thank everyone involved with the show for their help in bringing this vision of *Love's Labour's Lost* so vividly to life. Special thanks to his wife, Sally and his two sons, Jack and Drew for allowing him out of the house.

**Teresa Thuman**

(Director - *Othello*)

Teresa is delighted to return to GreenStage, for the fifth time after directing previous GS productions of *Henry VIII*, *As You Like It*, *King John* and Hard Bard *The Bacchae*. She has directed locally at Shoreline Community College, Mount Baker Theatre, Theater Schmeater, Cornish College of the Arts, Second Story Rep, Civic Light Opera/SMT, Bainbridge Performing Arts, Driftwood Players and numerous new-work projects and festivals. Teresa is the Founding Artistic Director Sound Theatre Company and has directed most of the STC productions over the past eight years. Other Shakespeare credits include *The Tempest*, *Troilus and Cressida* (STC), *Henry V* (University of Portland), *Comedy of Errors*, *As You Like It* (Central Coast Shakespeare Festival), *Pericles* (Cornish), and serving as Assistant Director for *The Merchant of Venice* and *The Merry Wives of Windsor* at Oregon Shakespeare Festival. Teresa has taught at UW School of Drama PATP, Cornish College, Shoreline CC, George Fox University, Allan Hancock College, UNC Chapel Hill, Freehold ETI and served eight years as an Artist-in-Residence at PCPA TheatreFest in California, where she taught in the Conservatory and acted in over thirty productions. Teresa holds an MFA in Directing from University of Portland and a BFA in Acting from Webster University.

**Marc "Mok" Moser**

(Director – *Backyard Bard*)

Mok is extremely tickled to bring another summer tour of shows to the parks around Seattle, to participate in the construction of two brilliant plays to be breathed into life in the sunshine, and to gently take credit for his cast's amazing work. He would like to deeply thank those of you who have been attending GreenStage shows for years, as well as those of you who are joining us for the very first time. So, if you see him, and want to be thanked, go talk to him after the show.

**James Enns**

(Stage Manager - *Othello*)

James is excited to be involved in his seventh season with GreenStage, especially so to have the opportunity to work with Teresa and this wonderful cast in order to round out the Shakespeare canon with *Othello*. He has worked with GreenStage under different titles including house manager, stage manager, and blood wrangler. James is a graduate of Western Washington University where he studied History and Political Science.

**Sarah Rose**

(Stage Manager – *Love's Labour's Lost*)

Sarah graduated from Whitworth University several years ago with a degree in Communication and a passion for stage managing. She is thrilled to be working on her first real Shakespeare show, and can't wait for more opportunities. Recent stage management credits include *The Odd Couple* and *Pride and Prejudice* at Lakewood Playhouse, *The Nerd at Centerstage Theatre*, and *Dogg's Hamlet*, *Cahoot's Macbeth* with Sound Theatre Company.

**Lisa Harrington**

(Stage Manager – *Backyard Bard*)

Lisa is a new addition to the GreenStage family this year, and is stoked to be stage managing for Backyard Bard. She graduated from Pacific Lutheran University in May 2013 with a BFA in Theatre Technology and Design. Her previous credits include *25th Annual Putnam County Spelling Bee*, *Coney Island Christmas*, and *Noises Off!* Many thanks to M, D, M, J, & D. Thanks to Mok for letting her stage manage for him again, and to the absolutely wonderful cast for two killer shows!

### Natalie Schmidt

(Assistant Director - *Backyard Bard*)

Natalie has thoroughly enjoyed putting on her assistant director hat for the first time! Originally from Arizona, Natalie earned a B.A. in Theatre from Arizona State University before relocating to Seattle. Recent credits from the other side of the table include *Poppy in Noises Off* (Burien Actors Theatre), *Crystal in Bottom Line* (Burien Actors Theatre), and *Hermia in A Midsummer Night's Dream* (Rogue Theatrics). Many thanks to the entire GreenStage family, and much love to Mok, Lisa, and our fabulous cast!

### Janessa Styck

(Costume Designer – *Love's Labour's Lost*)

Janessa is excited to be returning for her sixth season and ninth show with GreenStage.

### Elizabeth Power

(Costume Designer – *Othello*)

Elizabeth is delighted you have chosen to join this wonderful company of actors tonight for an evening of visual art. It was her pleasure to clothe them in regalia that should help to bring you into their world and make it come alive. At least this is her goal. This is her second summer season with GreenStage, and she also had some halloween fun with *The Bacchae*. She has recently recovered from sewing huge amounts of costumes for Snohomish High School's presentation of *Cinderella*, and Glacier Peak High School's *The Boyfriend*. When not sewing for theater she and her son make costumes of all kinds for cosplay at conventions all over the country. Thank you for coming, relax and enjoy the show!

### Laura Garcia

(Prop Designer)

Laura is excited to be providing things for actors to play with this summer and completing the Canon (KABOOM!), and especially excited to work on *Othello*! She read it when she was 15 and fell, straight away in love with Shakespeare. She has worked on over twenty shows with GreenStage as a company member since 1998. Notable gigs; Directing the 2002 *Taming of the Shrew*, and as Stage Manager and Props Designer on many GreenStage shows. She began her career in NYC, studying Directing and Acting at Herbert Berghof Studios. Her first job was Off-Broadway at The Manhattan Theatre Club. She is the Proud Mom of three beautiful daughters (who grew up backstage of GreenStage in the grass). BUAIDH NO BAS!

### Ryan Spickard

(Fight Choreographer)

A native to the Northwest, Ryan holds a BFA from Cornish College of the Arts and is a member of the Society of American Fight Directors and the United Stuntmen's Association. As a working fight choreographer and actor in the Seattle area, Ryan has performed with various theaters such as the Seattle Shakespeare Company, Book-It Repertory Theater, GreenStage, Balagan Theater, Theater Schmeater and others. Regional Credits include work with the Idaho Shakespeare Company and the Colorado Shakespeare Company where he was nominated as best supporting comedic actor for *The Comedy of Errors* by the Denver Post. In 2009, along with other members of the stage combat community in Seattle, he formed Performers' Forge, a theater company dedicated to the performance and education of staged violence, of which he is currently Co-Artistic Director.

### Amy Johnson

(Choreographer – *Love's Labour's Lost*)

Amy is a choreographer, dancer, and performer. Her choreography has been presented by Velocity Dance Center, Seattle International Dance Festival, On the Boards, Centerstage Theatre, Cornish College of the Arts, Bellevue College, and The Seattle Center at the Intiman Playhouse Studio. She has great love for the work of Charlie Chaplin and Kurt Vonnegut. Amy holds a Bachelor of Fine Arts in Dance from Cornish College of the Arts. She is so pleased to have had the chance to work with the performers of *Love's Labour's Lost*.

### Carly Ann Worden

(Composer – *Love's Labour's Lost*)

Carly Ann Worden is a Seattle-based composer, arranger, producer, performer, and Vlogger on YouTube. After placing in the Top Ten Seattle Classical KING FM 98.1 YouTube Young Artist Awards in 2010 and 2011, Carly Ann performed at Benaroya Hall for the Snowman Foundation's *Ten Grands Concert* with original compositions for piano. In 2013, Carly Ann won a Merit Award from the Kennedy Center of the Arts for her original musical score for the production of *Translations* at Bellevue College. Carly Ann studied music composition at The Boston Conservatory of Music, Dance, and Theater, and will be attending Seattle's Cornish College of the Arts in the fall to continue studying music composition for film.

### Erin Mettling

(House Manager – *Love's Labour's Lost*)

Erin is excited to be back for this season of GreenStage. Having spent a summer outside, helping with *King Lear*, then embracing her bloody side with *The Bacchae*, she's ready for something lighthearted. Feeling as if she's found a place for herself with GreenStage, she doesn't foresee herself leaving the fold any time soon.

### Lindsay Hop

(House Manager - *Othello*)

Lindsay is so excited to be working with GreenStage again! She fell in love with theatre in college and whole-heartedly believes in GreenStage's philosophy. Lindsay helped as Wardrobe Manager and laundress for all the bloody bloody clothes in *The Bacchae*. After working inside as a bartender at ArtsWest, she is looking forward to getting outside this summer. Working with great people and great theatre, what more could a girl ask for!

### Natalie Gress

(Tour Manager – *Love's Labour's Lost*)

Natalie is incredibly excited to be working with GreenStage again this summer. You might recognize her from *A Midsummer Night's Dream* where she was an apprentice last year. Recently graduated from Liberty High School, Natalie ventures into the next chapter of her life at Seattle Pacific University where she will be double majoring in Theatre and English Literature. She would like to thank the company for being so inviting and the audience for supporting outdoor theatre. Enjoy the show!



Greenstage Completes  
Shakespeare's Canon!



## STAFF

### **Erin Day** (Artistic Director)

Erin Day is humbled by the array of talent and dedication she has been privileged to spend summers with. Since moving from Washington D.C., she found a home in GreenStage and finds nothing grander than playing with them and with you. Around town, she has performed at Seattle Public Theater, Theatre Babylon, Seattle Fringe Festival, The Washingtonians! and others. She is currently a member of The Midnite Mystery Players and is honored to serve as Artistic Director for GreenStage. Thanks to her amazing family and especially to you. Enjoy the show!

### **Ken Holmes** (Managing Director)

Ken is also an actor, director, graphic designer, photographer, and proud father. He has been working with GreenStage since 1993, when he performed in *A Midsummer Night's Dream* with the company. Since then, he has acted in or directed over twenty-five shows with GreenStage, built sets, sewed costumes, glued props together, painted floors, planned seasons, written checks and filled out many grant applications and tax forms. Ken has also appeared at several other theaters in Seattle, such as Book-It Repertory Theatre, Seattle Shakespeare Company, Theater Schmeater, Taproot, ArtsWest, Centerstage, and others. He thanks his lovely wife Lisa and daughter Ruby for putting up with his theatre adventures.

### **Mok Moser** (Back Yard Bard Director)

See Production Team bios

### **Michelle Rodriguez** (Production Manager)

Michelle is happy to be back for another summer in the parks. This is her fifth year working with GreenStage and her second year as Production Manager. In years past she has stage managed for GreenStage on *Taming of the Shrew* (2012), *Hamlet* (2008) and *Richard III* (2007). Since receiving her BA in theatre at the University of Southern California, she has worked at theatres in and around Los Angeles, Portland, and Seattle. Local haunts include Burien Actors Theatre, Centerstage, ReAct, SecondStory Repertory, and Taproot Theatre. She would like to thank her wonderful husband, Thomas, and her adorable puppy, Fergie, for their considerable awesomeness.

### **Meredith Armstrong** (Facilities Manager)

Meredith acts, bellydances, and dialect coaches--all in random locations around the Puget Sound region. She has played many dead boys, witches, and Jacobean

cougars for GreenStage since she joined the company in 2005. She has also sewn costumes, hauled gear, swept and mopped floors, and cleaned fake blood off of sets (and herself). When not working in theatre, she spends her time writing fiction, playing on aerials equipment, climbing rock walls, and cooking and baking. Her favorite team sports to watch are baseball and curling, and her favorite team sport to play is snowshoe badminton.

### **Eve Hammond** (Education Director)

For the past over 20 years, Eve Hammond has directed, educated and taught both Theatre Arts and Integrative Arts throughout the Seattle/Mercer Island/Bothell and Woodinville area schools and theatres. Working for Seattle Children's Theatre, Youth Theatre Northwest and both Northshore and Seattle School Districts, she created and managed student theatre companies serving families with multiple ranges of kids from preschool to college. She was the Education Coordinator for the Washington Shakespeare Company in Olympia, WA, helping to implement their popular "Apprentice" program in which high school actors and technicians worked alongside adults in "real

world" theatre experiences. In her spare time, she was the Artistic Director of Vagabond Productions and Northshore Networks Youth Theatre as well as being on the Washington State Board of Education teams for creating and implementing theatre arts standards to all teachers. She has a lovely husband and two talented and creative kids plus a dog and assorted cats. She loves her clan full of friends and looks forward to bringing her enthusiasm for teaching Shakespeare to young people through the open door of GreenStage.

### **Greg Scheiderer** (Marketing Director)

Greg is a Shakespeare lover, and is just six plays shy of viewing the entire canon. He's a former board president at Balagan Theatre. In addition to theatre Greg enjoys stargazing and writes the blog [SeattleAstronomy.com](http://SeattleAstronomy.com). He also enjoys baseball, music, writing, reading, gardening, and wine. He and his wife Cynthia live in West Seattle where they run Scheiderer Partners, a strategic communication and public affairs consulting practice. He has more than 30 years of experience in journalism, media relations, public relations, and public policy advocacy.



Strategic communication and public affairs consultants for arts, nonprofits, education & government

206.714.0448 | [www.ScheidererPartners.com](http://www.ScheidererPartners.com)





## WHY SUPPORT GREENSTAGE

Every summer, thousands of people trek to the park with a blanket and a picnic to enjoy some Shakespeare. GreenStage's programs have become an expected and highly anticipated part of Seattle's summer fun in the sun. Thank you for sharing part of your summer with us this year.

I'm extremely proud that GreenStage is reaching another landmark goal this year by completing Shakespeare's Canon. Only a handful of other theaters in the world have managed this. It took us many years – I believe we first came up with the idea way back in 1995 or 1996.

But I digress....

I'm not writing this note to just go on about completing the canon - KABOOM! (Oh, in case you didn't know, whenever someone mentions completing the canon, you should yell "Kaboom!". Try it, it's fun!) Anyway... the reason for my note is to talk about the importance of money.

GreenStage doesn't charge admission like other theaters, but our expenses are very similar. The trappings of theater – costumes, sets, props, and of course, actors – aren't free. And those expenses are only part of what makes a company tick. There's also paying staff, paying rent for storage, insurance, licenses, room rentals for rehearsals, printing and advertising, postage... and the list goes on.

While we make a good portion of our income from donations collected in the park, we also require contributions at a higher level to keep things running smooth.

Please consider a contribution. You can mail in the form below, or just hand it to the house manager. You can donate online at [greenstage.org/donate](http://greenstage.org/donate). You can even split up your donation into installments, or commit to automatic monthly payment plan.

You are what keeps us coming back. Thanks for supporting free theater! KABOOM!

**Ken Holmes, Managing Director**

## Get Involved

If you love Shakespeare in the Park, consider helping us out by joining our board of directors or volunteering at a show. Join our dedicated and fun-loving team that makes FREE Shakespeare happen. Contact us at [greenstage@greenstage.org](mailto:greenstage@greenstage.org).



## Donate Today!

Scan the code above with your smartphone and make a donation from the comfort of your picnic blanket. Help keep Shakespeare in the Park FREE!

## How much should I donate?

We'll leave that up to you. Whether it's a few bucks in the hat at the end of the show, or a big check with lots of zeros! On the next page, you'll find a list of our expenses in case you want to sponsor something specific.



**YES! I want to support free theatre!**

**CREDIT CARD DONATIONS ACCEPTED** - See the House Manager for details.

Donate online at [www.greenstage.org](http://www.greenstage.org)

Name \_\_\_\_\_

Address \_\_\_\_\_

City \_\_\_\_\_ State \_\_\_\_\_ Zip \_\_\_\_\_

Phone \_\_\_\_\_ Email \_\_\_\_\_

**How do you want to be listed in our program?**

☐ Use the name above ☐ Use this name \_\_\_\_\_

☐ I prefer to remain anonymous

**Donation amount:**

☐ \$500 ☐ \$300 ☐ \$150 ☐ \$50 ☐ \$25 ☐ Other \$ \_\_\_\_\_

Make checks payable to  
GreenStage

Mail completed form to:  
GreenStage • PO Box 9594  
Seattle, WA 98109

## DOUBLE YOUR DONATION!

Ask your employer  
about corporate  
matching!





## Contributors - Donations received between 6/1/2013 – 6/30/2014

### \$3000 and above

4 Culture  
KUOW 94.9 FM\*  
Seattle Parks and Recreation\*

### \$1000 - \$2999

Seattle Office of Arts and Cultural  
Affairs  
Jeff Taylor

### \$500 - \$999

Anonymous (1)  
Todd Currie  
Emmett Driscoll  
Ron Meckler  
Nicole Vernon

### \$300 - \$499

Microsoft Matching Gifts Program  
Seattle Foundation  
Meredith Armstrong and Erik Swanson  
Peter Burford and Alice Sieger  
Denise Martin and Bruce Green  
Jerry and Vreni Watt

### \$150 - \$299

Ok Clark  
Alicia Doyl  
Ken and Lisa Holmes  
Jack Holtman  
Megan Pursell  
Cynthia and Greg Scheiderer  
Janessa Jayne Styck  
Tom Sunderland and Emily Riesser  
Jerry and Karen White

### \$50 - \$149

Harold and Lynne Armstrong  
Doug and Tandra Birkebak  
George Boswell  
John Bradshaw  
Kathy Dugaw

Krista Erickson  
Fred and Ellen Hanson  
Sue Hartman and Patrick Caffee  
H J Martin  
Corey McDaniel  
Amelia Meckler  
Erin Mettling  
Anne Miano  
Sue Moser and Scott Seramur  
Mary Murfin Bayley  
Meg Pageler Mourning and David  
Mourning  
Will Peterman and Susan Ferrell Peter-  
man  
Dan Portman  
Charles Putman  
Kent Radek  
Michael Ramquist  
Eric and Karen Richter  
Anne Sakrison  
Eric and Tera Schreiber  
Ryan Spickard  
Gianni Truzzi

### \$10 - \$49

Anonymous (6)  
Judith Adams  
Kim Ahlf  
Andrew Aiken  
Tyraina Berry  
Dale Brandenstein  
Elisabeth Bursell  
Zandi Carlson  
Jason Choi  
Adrienne Dahlin  
April DeNonno  
Emmett Driscoll  
Roseanne Ely  
Julia Evanovich  
Richard Evans  
Kris Fulsaa  
Alan Gibbs  
Richard Goldfarb  
Julia Griffin

Sam Hagen  
Linda Harkness  
Sarah Haskell  
John Kelleher  
Josh Krupke  
Maverick, Jax, and Chase Larkin  
Patrick Lennon  
Noah Luce  
Sharon Lynch  
Sarah Merry  
Dawn Merydith and Duane Taylor  
Mary Metastasio  
Kristina Moravec  
Mandy Nelson  
Joshua Normand  
Ronda and Terry O'Brien  
Julia Paulsen  
David Rollison  
Erika Rusch  
Gena Shurtleff  
Bobbie Simone  
Laurie Spidell  
Alber Sucupira  
Mary Thomas  
mary walker  
Jim Walseth  
Mr & Mrs Allan Welch  
Michael Wyatt  
Fara Zimmerman

*\* In kind donations  
GreenStage makes every effort to pub-  
lish donation information accurately. This  
list represents donations made between  
6/1/2013 and 6/30/2014. If your name is  
incorrect or missing, please contact  
GreenStage at 206-748-1551 or by email at  
greenstage@greenstage.org.*

### GreenStage

Seattle's Shakespeare in the Park Company  
www.greenstage.org | 206-748-1551  
PO Box 9594, Seattle, WA 98109

#### Board of Directors

Peter Burford  
Alicia Doyl  
Ken Holmes  
Scott Smallbeck  
Nicole Vernon

#### GreenStage Staff

Artistic Director – Erin Day  
Managing Director – Ken Holmes  
Education Director – Eve Hammond  
Touring Director – Marc “Mok” Moser  
Marketing Director – Greg Scheiderer  
Casting Director – Amelia Meckler  
Production Manager – Michelle Rodriguez  
Facilities Manager – Meredith Armstrong  
Program Design by Devlin Donnelly  
www.devlindonnelly.com

## Bumbershoot is for kids too!



**Kid-sized performances, hands-on  
activities, and interactive programs.  
Plus, children age 10 and under  
get into Bumbershoot for FREE!**





We want to give a special thank you to all the donors who gave through Seattle Foundation's GiveBIG campaign this year. Through the 2014 GiveBIG campaign, GreenStage received \$5,000 in donations, plus matching funds from Seattle Foundation. THANK YOU to everyone on this list for taking part in this amazing giving campaign, and we hope you look for it again next spring!

Judith Adams  
Kim Ahlf  
Harold Armstrong  
Meredith Armstrong  
Tyraina Berry  
Peter Burford  
Elsbeth Bursell  
Zandi Carlson  
Irene Choi  
Todd Currie  
April DeNonno  
Alicia Doyl  
Emmett Driscoll  
Kathryn Dugaw  
Roseanne Ely  
Krista Erickson  
Richard Evans  
Susan Ferrell  
Alan Gibbs  
Richard Goldfarb  
Julia Griffin  
Sue Hartman  
Sarah Haskell  
Ken Holmes  
Jack Holtman  
Josh Krupke  
Teri Lazzara  
Patrick Lennon  
Noah Luce  
Sharon Lynch

H J Martin  
Corey McDaniel  
Ronald Meckler  
Amelia Meckler  
Sarah Merry  
Mary Metastasio  
Kristina Moravec  
Meg Mourning  
Mary Murfin Bayley  
Amanda Nelson  
Julia Paulsen  
Megan Pursell  
Charles Putman  
Kent Radek  
Michael Ramquist  
Eric & Karen Richter  
David Rollison  
Erika Rusch  
Gregory Scheiderer  
Eric Schreiber  
Laurie Spidell  
Alber Sucupira  
Jeff Taylor  
Gianni Truzzi  
Nicole Vernon  
Jewel Vuong  
Mary Walker  
Jerry Watt  
Rochelle Wyatt

# ARAKUS

## AETERNO ELEMENTUM: A HEAVY METAL OPERA

JANUARY 16TH, 17TH, 24TH AND 25TH, 2015

KIRKLAND PERFORMANCE CENTER

TICKETS AVAILABLE AT  
[WWW.HEAVYMETALOPERA.COM/GREENSTAGE](http://WWW.HEAVYMETALOPERA.COM/GREENSTAGE)  
BOX OFFICE: 425-893-9900

**RESERVE YOUR SEATS NOW!**  
ENTER THE DISCOUNT CODE 'GREENSTAGE'  
FOR 15% OFF YOUR TICKET PRICE

DISCOUNT LIMITED TO THE FIRST 100 TICKETS PER NIGHT





# Seattle OUTDOOR THEATER FESTIVAL

## JULY 12 & 13 VOLUNTEER PARK – FREE



In its 13th year, the annual Seattle Outdoor Theater Festival has become the unofficial launching pad of Seattle's outdoor theater season. Local companies converge on Seattle's Volunteer Park for two days of free plays.

### PERFORMANCES BY

GreenStage  
Theater Schmeater  
Wooden O  
Jet City Improv  
The 14/48 Project  
Shakespeare Northwest  
Last Leaf Productions  
Young Shakespeare Workshop

Complete festival schedule at  
[www.GreenStage.org/soff](http://www.GreenStage.org/soff)



**LIKE GREENSTAGE  
ON FACEBOOK!**

| SUN                                                                                                                                                   | M  | T  | W  | THU                                                                                                 | FRI                                                                                                                                                 | SAT                                                                                                                                                                                           |
|-------------------------------------------------------------------------------------------------------------------------------------------------------|----|----|----|-----------------------------------------------------------------------------------------------------|-----------------------------------------------------------------------------------------------------------------------------------------------------|-----------------------------------------------------------------------------------------------------------------------------------------------------------------------------------------------|
| <b>2014 GreenStage Summer</b> go see a play<br><b>Performance Calendar</b><br>FREE THEATRE • donations joyfully accepted                              |    |    |    |                                                                                                     | <b>11</b><br><b>Love's - 7pm</b><br>Fall City Park<br><b>Othello - 7pm</b><br>Volunteer Park<br><b>All's Well - 7pm</b><br>High Point Commons       | <b>12</b><br><b>Love's - 7pm</b><br>Volunteer Park <b>SOTF</b><br><b>Othello - 7pm</b><br>Seward Park<br><b>All's Well - 7pm</b><br>Salmon Bay Park                                           |
| JULY 2014                                                                                                                                             |    |    |    |                                                                                                     |                                                                                                                                                     |                                                                                                                                                                                               |
| <b>13</b><br><b>Othello - 2pm</b><br>Volunteer Park <b>SOTF</b><br><b>All's Well - 3pm</b><br>Madrona Playfield<br><b>Love's - 7pm</b><br>Seward Park | 14 | 15 | 16 | <b>17</b><br><b>Othello - 7pm</b><br>Lower Woodland Park                                            | <b>18</b><br><b>Love's - 7pm</b><br>Lower Woodland Park<br><b>Othello - 7pm</b><br>Fall City Park<br><b>All's Well - 7pm</b><br>Cowen Park          | <b>19</b><br><b>DOUBLE FEATURE</b><br><b>Othello - 3pm</b><br><b>Love's - 7pm</b><br>Lower Woodland Park<br><b>Comedy - 7pm</b><br>Madrona Playfield                                          |
| <b>20</b><br><b>Comedy - 3pm</b><br>High Point Commons<br><b>DOUBLE FEATURE</b><br><b>Love's - 3pm</b><br><b>Othello - 7pm</b><br>Lower Woodland Park | 21 | 22 | 23 | <b>24</b><br><b>Love's - 7pm</b><br>Lincoln Park<br><b>Othello - 7pm</b><br>Ober Park, Vashon       | <b>25</b><br><b>Love's - 7pm</b><br>Willis Tucker Park, Snohomish<br><b>Othello - 7pm</b><br>Lincoln Park<br><b>Comedy - 7pm</b><br>Salmon Bay Park | <b>26</b><br><b>Love's - 7pm</b><br>Lincoln Park<br><b>Othello - 7pm</b><br>Dottie Harper Park, Burien<br><b>DOUBLE FEATURE</b><br><b>All's Well &amp; Comedy - 7pm</b><br>David Rodgers Park |
| AUGUST 2014                                                                                                                                           |    |    |    |                                                                                                     |                                                                                                                                                     |                                                                                                                                                                                               |
| <b>27</b><br><b>Love's - 3pm</b><br>Discovery Park <b>CHAT</b><br><b>Othello - 3pm</b><br>Lincoln Park<br><b>All's Well - 3pm</b><br>Judkins Park     | 28 | 29 | 30 | <b>31</b><br><b>Othello - 7pm</b><br>Lynndale Park, Lynnwood                                        | <b>1</b><br><b>Love's - 7pm</b><br>Camp Long<br><b>Othello - 7pm</b><br>Willis Tucker Park, Snohomish<br><b>Comedy - 7pm</b><br>Cowen Park          | <b>2</b><br><b>Love's - 7pm</b><br>Dottie Harper Park, Burien<br><b>Othello - 7pm</b><br>Camp Long<br><b>DOUBLE FEATURE</b><br><b>All's Well &amp; Comedy - 7pm</b><br>Wallingford Playfield  |
| <b>3</b><br><b>Love's - 3pm</b><br>Battle Point Park, Bainbridge Island<br><b>Othello - 3pm</b><br>Discovery Park <b>CHAT</b>                         | 4  | 5  | 6  | <b>7</b><br><b>Love's - 7pm</b><br>Lynndale Park, Lynnwood<br><b>Othello - 7pm</b><br>Magnuson Park | <b>8</b><br><b>Love's - 7pm</b><br>Magnuson Park<br><b>Othello - 7pm</b><br>Jefferson Park<br><b>Comedy - 7pm</b><br>Wallingford Playfield          | <b>9</b><br><b>DOUBLE FEATURE</b><br><b>Othello - 3pm</b><br><b>Love's - 7pm</b><br>Magnuson Park<br><b>Comedy - 7pm</b><br>David Rodgers Park                                                |
| <b>10</b><br><b>All's Well - 3pm</b><br>Sandel Park<br><b>Love's - 4pm</b><br>Marvista Park, Normandy Park                                            | 11 | 12 | 13 | <b>14</b><br><b>Love's - 7pm</b><br>Volunteer Park                                                  | <b>15</b><br><b>Love's - 7pm</b><br>Jefferson Park<br><b>Othello - 7pm</b><br>Volunteer Park<br><b>Comedy - 7pm</b><br>Sandel Park                  | <b>16</b><br><b>TRIPLE FEATURE</b><br><b>All's Well - 1pm</b><br><b>Othello - 3pm</b><br><b>Love's - 7pm</b><br>Volunteer Park                                                                |

**All's Well That Ends Well** and **The Comedy of Errors** are part of Backyard Bard.

**SOTF** – Seattle Outdoor Theatre Festival

**CHAT** – Chat with the cast after the performances at Discovery Park.

All performances in Seattle except as indicated. All information subject to change.

More information and maps to performance spaces at [www.greenstage.org](http://www.greenstage.org)

go see a play