

# GreenStage

2019 season | 31st anniversary



# SHAKESPEARE IN THE PARK

## the taming of the shrew

Directed by Jennifer Crooks

## henry iv, part 2

Directed by Chris Shea

JULY 12–  
AUGUST 17

**FREE!**

seattle

burien

fall city

lynnwood

maple valley

## BACKYARD BARD

## the merry wives of windsor

## measure for measure

Directed by Erin Day



## SEATTLE OUTDOOR THEATER FESTIVAL

16 performances, 9 companies, 3 stages, 2 days, 1 park

JULY 13 & 14 Volunteer Park, Seattle

[greenstage.org](http://greenstage.org)



# SHAKESPEARE IN THE PARK



## The Taming of the Shrew

by William Shakespeare • directed by Jennifer Crooks ★

A troupe of Women's Suffragists performs one of Shakespeare's earlier most famous comedies as part of a raucous protest demonstration for Women's Rights. The story of strong-willed, outspoken Katherine and arrogant Petruchio's attempts to tame her into marriage at the entreaty of the men of Padua, makes for rich material as "Shakespeare's Shrews" tackle marriage, gender roles, and social hierarchies. But what is a little social commentary without a healthy helping of laughs and a dash of love?

*"I see a woman may be made a fool,  
If she had not a spirit to resist."*

— Katherine, *The Taming of the Shrew*

### The Cast of The Taming of the Shrew



Allison Adams  
- Grumio -



Mary E. Brown  
- Baptista -



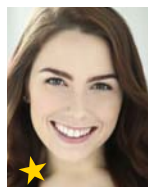
MJ Daly  
- Tranio -



Carol Gnojewski  
- Vincentio -



★  
Emily Huntingford  
- Hortensio -



★  
Jordan Kerbs  
- Gremio -



Isis King  
- Lucentio -



★  
Marena Kleinpeter  
- Bianca -



Cassandra Leon  
- Katherine -



Caitlin Macy-Beckwith  
- Petruchio -



Melissa Wilson  
- Biondello -

### SHAKESPEARE AND SUFFRAGE

Shakespeare wrote during Queen Elizabeth I's reign, when the privileged classes feared the uprooting of social hierarchies based in gender, demographics, class, and female rebellion. Women accused of being a shrew could be punished and shamed in any number of unpleasant ways. Since then, history has seen gains for women's rights as well as the accompanying backlash of the powerful and privileged. In 1919, the protests of the Women's Suffrage movement led to congress approving the Action of Women's Right to Vote - what would become the 19th Amendment the next year. GreenStage celebrates all the outspoken women that came before us, are with us today, and will lead us into the future, who refuse to be tamed or silenced in the fight for equality.

**2019 Season | 31 years of free Shakespeare!**  
**Coming to a park near you!**



# Henry IV, part 2

by William Shakespeare • directed by Chris Shea ★

What does it take to be a good leader? A good father? A good son? A good human? In *Henry IV, part 2*, no easy answers are in sight. The dying King Henry, dealing with an ongoing insurrection, is consumed by his fear of the type of king Prince Hal will be when he assumes the throne. Will Hal, tutored in nefarious and lecherous ways by the larger than life Sir John Falstaff, be able to leave his wild past behind and be the leader a divided England needs? This play probes what happens when a world of privilege collides with the world of salty earth.

## The Cast of Henry IV, part 2



Mary Murfin Bayley  
- Mistress Quickly -



Michelle Lynn Conklin  
- Falstaff -



Aubrey Sara Kaye  
- Prince Hal -



David S. Klein  
- Chief Justice -



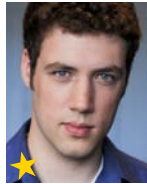
Chris Martinez  
- Bardolph -



Eleanor Moseley  
- King Henry -



Dan Ruiz Salvatura  
- Doll Tearsheet -



Luke Saylor  
- Lancaster -



Laura Steele  
- Archbishop -



Sean Patrick Taylor  
- Shallow -



Emma Wilkinson  
- Pistol -



Megan Kay Wright  
- Poins -



Marissa Wyll  
- Lady Percy -

### SHAKESPEARE'S HISTORIES

*Henry IV, part 2* is the third installment in GreenStage's history series, following our *Richard II* in 2017, and last year's *Henry IV, part 1*. Shakespeare wrote his "game of crowns" histories in two sets of four plays. Next in the series is *Henry V*, followed by the three *Henry VI* plays, and ending with *Richard III*.

# BACKYARD BARD



Backyard Bard presents two stripped-down productions of Shakespeare's plays, each cut to one hour long, and both performed by the same four versatile actors.

## The Merry Wives of Windsor

**"The world's mine oyster"**

Falstaff is experiencing an economic downturn. What better way to refill his empty purse than to woo two wealthy married women he's only just met? What could possibly go laughably, horribly wrong for this beloved, famous knight? Discover the heights to which a noble suitor will pretend to aspire, and the depths to which he'll also sink, just to win the hearts and coffers of women much, much smarter than he.

## Measure for Measure

**"To whom should I complain?"**

Vienna has become a corrupt city – in large part due to its lenient leader, Duke Vincentio – so he steps away leaving his puritanical deputy, Angelo, in charge. Angelo soon sets to bring the city to heel through ancient, outdated, and inflexible laws. Against this backdrop of an authoritarian government, a young novice nun, Isabella, comes to plead to save her brother from execution. Angelo offers to spare her brother's life, but only in return for sex. When she threatens to speak out, she is reminded that his power will outweigh her truth.

Though Shakespeare wrote *Measure for Measure* in the early 1600s, the play remains astonishingly resonant today.

## The Cast of Backyard Bard



Havilah Chrss



Benjamin Nickols



Bryce Publow



Jessica Severance

### ABOUT BACKYARD BARD

In 2008 a GreenStage fan wanted a performance of *Twelfth Night* for his Shakespeare themed birthday party. Our large cast mainstage production was just too big to fit at a private home, so we came up with the idea of cutting *Twelfth Night* down to under an hour and with only four actors.

Over the next few years *Tiny Twelfth Night* made several appearances at parties and schools, and in 2013, it was included in our summer season with a full run, and for more of a challenge *The Merry Wives of Windsor* was chosen to run in repertory.

Backyard Bard has been gracing smaller Seattle parks, and private parties, ever since. If you are interested in hosting a performance, contact us at [greenstage@greenstage.org](mailto:greenstage@greenstage.org)



Ashley Salazar and Jordan Kerbs. Photo by Jennifer Crooks

# SEATTLE OUTDOOR THEATER FESTIVAL

Volunteer Park | July 13 & 14

SOTF is back! Bringing together ten local theater companies to present two full days of free theatre all in one park.

## PERFORMANCES BY

GreenStage • Theatre Schmeater • Seattle Shakespeare Company's Wooden O • Last Leaf Productions • Freehold Theatre • Shakespeare NW • 14/48 Projects • Dacha Theatre • Young Shakespeare Workshop • Aerial demonstrations by Versatile Arts



Dante's Inferno Dogs will be parked by our Info Booth during both days of the festival, offering their great menu of franks and sausages, including vegan and gluten-free options.

[greenstage.org/sotf](http://greenstage.org/sotf)



## Shakespeare Summer Camps!

for ages 5-16

July 16 – August 17 in three locations

- Queen Anne Community Center
- Magnuson Park Community Center
- High Point Commons - West Seattle

Aspiring young actors take a week-long journey into the world of Shakespeare!

[greenstage.org/camp](http://greenstage.org/camp)



## Get Involved

If you love GreenStage, consider helping us out by joining our board of directors or volunteering. Be part of our dedicated and fun-loving team that makes FREE theatre happen.

[greenstage@greenstge.org](mailto:greenstage@greenstge.org)

## Donate Today!

Your support keeps our free theatre programs alive and thriving.

[greenstage.org/donate](http://greenstage.org/donate)

# COMING TO A PARK NEAR YOU!

With over 20 parks on our summer tour, we're sure to be coming to one near you. Park addresses are below, and can be matched on the map by number.

## SEATTLE PARKS

- Camp Long**  
34th Ave SW & SW Dawson St
- Cowen Park\***  
15th Ave NE & Cowen Pl NE
- David Rodgers Park\***  
2800 1st Ave W
- Delridge Playfield\***  
4458 Delridge Way SW
- Discovery Park**  
3801 W. Government Way
- High Point Commons\***  
6400 Sylvan Way SW
- Lincoln Park**  
8103 Fauntleroy Way SW
- Lower Woodland Park**  
5775 W Green Lake Way N
- Magnuson Park**  
6344 NE 74th St
- Othello Playfield\***  
4351 S Othello St
- Pratt Park\***  
1800 S Main St
- Salmon Bay Park\***  
2001 NW Canoe Pl
- Sandel Park\***  
9053 1st Ave NW
- Seward Park**  
5898 Lake Washington Blvd S
- View Ridge Playfield\***  
4408 NE 70th St
- Volunteer Park**  
1247 15th Ave E
- Wallingford Playfield\***  
4219 Wallingford Ave N

\*Backyard Bard Performance Location

## OUTSIDE OF SEATTLE

- Fall City Park**  
4101 Fall City - Carnation Rd SE, Fall City
- Lake Burien Park**  
1620 SW 149th St, Burien
- Lake Wilderness Park**  
22500 SE 248th St, Maple Valley
- Lynndale Park**  
18927 72nd West - Lynnwood

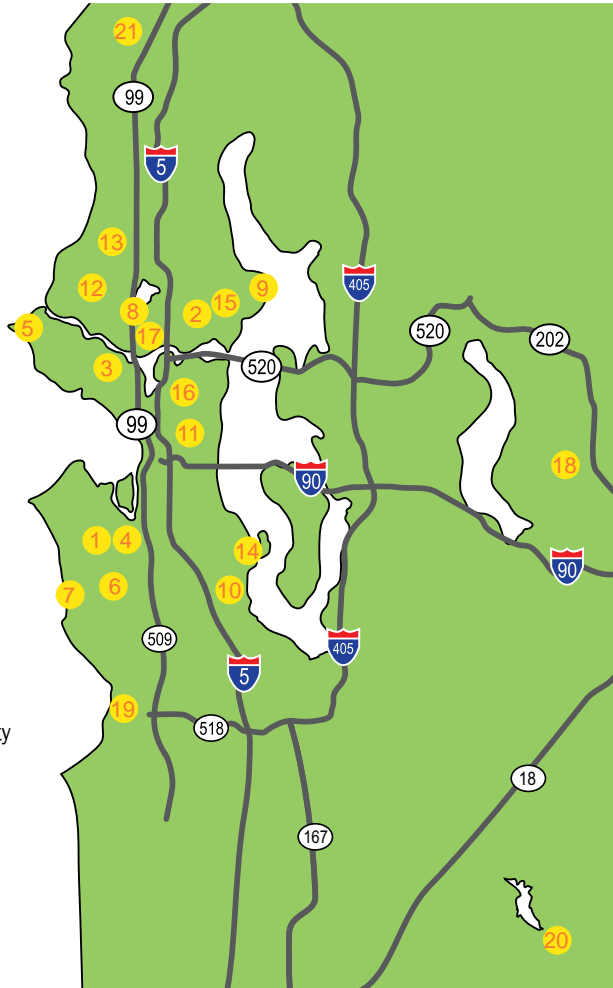


Hannah Coleman and Anthony Duckett - photo by E. Harris Photography

## Need help finding us?

Visit [www.greenstage.org](http://www.greenstage.org) for links to venues, addresses, and directions.

Message line: (206) 748-1551



SUN	M	T	W	THU	FRI	SAT
<b>2019 Summer</b> go see a play <b>PERFORMANCE CALENDAR</b> <b>FREE</b> • donations joyfully accepted					12 <b>HENRY IV - 7 pm</b> Magnuson Park <b>SHREW - 7 pm</b> Seward Park <b>Wives - 7 pm</b> High Point Commons	13 <b>HENRY IV - 7 pm</b> Seward Park <b>SHREW - 7 pm</b> Volunteer Park - <b>SOTF</b> <b>Measure - 7 pm</b> High Point Commons
<b>JULY 2019</b>						
14 <b>HENRY IV - 2 pm</b> <b>Wives - 4 pm</b> <b>Measure - 5:15 pm</b> Volunteer Park - <b>SOTF</b> <b>SHREW - 3 pm</b> Seward Park	15	16	17 <b>SHREW - 7 pm</b> Magnuson Park	18 <b>HENRY IV - 7 pm</b> Magnuson Park	19 <b>SHREW - 7 pm</b> Camp Long <b>Measure - 7 pm</b> Wallingford Playfield	20 <b>HENRY IV - 7 pm</b> Camp Long <b>SHREW - 7 pm</b> Magnuson Park <b>Wives - 7 pm</b> Wallingford Playfield
21 <b>HENRY IV - 3 pm</b> Magnuson Park <b>SHREW - 5 pm</b> Lake Wilderness Park <b>Wives - 3 pm</b> <b>Measure - 4:15 pm</b> Salmon Bay Park	22	23	24	25 <b>SHREW - 7 pm</b> Lower Woodland	26 <b>HENRY IV - 7 pm</b> Lower Woodland Park <b>Measure - 7 pm</b> View Ridge Playfield	27 <b>HENRY IV - 3pm</b> <b>SHREW - 7 pm</b> Lower Woodland Park
<b>AUGUST 2019</b>					All dates, times, and locations subject to change.	
28 <b>SHREW - 3 pm</b> <b>HENRY IV - 7 pm</b> Lower Woodland Park <b>Wives - 3 pm</b> <b>Measure - 4:15 pm</b> David Rodgers Park	29	30	31 <b>SHREW - 7 pm</b> Lynnedale Park in Lynnwood	1 <b>HENRY IV - 7 pm</b> Lynnedale Park in Lynnwood	2 <b>SHREW - 7 pm</b> Fall City Park <b>Measure - 7 pm</b> Othello Park	3 <b>HENRY IV - 7 pm</b> Lake Burien Park <b>Wives - 7 pm</b> Othello Park
4 <b>SHREW - 3 pm</b> Discovery Park <b>HENRY IV - 5 pm</b> Lake Wilderness Park <b>Wives - 3 pm</b> <b>Measure - 4:15 pm</b> Sandel Park	5	6	7 <b>HENRY IV - 7 pm</b> Lynnedale Park in Lynnwood	8 <b>HENRY IV - 7 pm</b> Lincoln Park <b>SHREW - 7 pm</b> Lynnedale Park in Lynnwood	9 <b>HENRY IV - 7 pm</b> Fall City Park <b>SHREW - 7 pm</b> Lincoln Park <b>Wives - 7 pm</b> Cowen Park	10 <b>HENRY IV - 7 pm</b> Lincoln Park <b>SHREW - 7 pm</b> Lake Burien Park <b>Measure - 7 pm</b> Cowen Park
11 <b>HENRY IV - 3 pm</b> Discovery Park <b>SHREW - 3 pm</b> Lincoln Park <b>Wives - 3 pm</b> <b>Measure - 4:15 pm</b> Delridge Park	12	13	14	15 <b>SHREW - 7 pm</b> Volunteer Park	16 <b>HENRY IV - 7 pm</b> Volunteer Park <b>Wives - 7 pm</b> Pratt Park	17 <b>QUADRUPLE FEATURE</b> <b>Wives - 1 pm</b> <b>Measure - 2 pm</b> <b>HENRY IV - 4 pm</b> <b>SHREW - 7 pm</b> Volunteer Park
<b>SOTF</b> – Seattle Outdoor Theatre Festival <b>DF</b> – Double Feature <b>CHAT</b> – Chat with the cast after the show at Discovery Park						

All dates, times, and locations are subject to change. Check website for up-to-date schedule information.

**greenstage.org | 206-748-1551**



GreenStageSeattle



@Green\_Stage

