



# SHAKESPEARE in the Park

**FREE**  
theatre!

**A MIDSUMMER NIGHT'S DREAM**

directed by Ken Michels

**KING LEAR**

directed by Erin Day

**BACKYARD BARD**

**TWELFTH NIGHT • THE MERRY WIVES OF WINDSOR**

directed by Marc "Mok" Moser

**JULY 12 – AUGUST 18, 2013 – FREE!**

Seattle | Bainbridge Island | Burien | Fall City | Lynnwood | Redmond | Snohomish

**GreenStage.org • 206-748-1551**



**GreenStageSeattle**



**@Green\_Stage**

**SPONSORS**



**MEDIA SPONSOR**



# Redmond ACTS OUT 2013



## OUTDOOR THEATERFEST LIVE

### 3 DAYS • 15 SHOWS • FREE

**AUG. 16** • **AUG. 17 + 18** • **ANDERSON PARK**  
FRI – 5PM TO SUNSET    SAT + SUN – 1PM TO SUNSET    7802 168th AVE NE REDMOND, WA

**FRI • AUG. 16** 5PM Live Music with 12 O'Clock Shadow 6PM Split 2nd Improv 7PM A Midsummer Night's Dream by GreenStage  
**SAT • AUG. 17** 1PM Wedded but No Wife by Redwood Theatre 230PM Where No Man Has Gone Before... by Seattle Experimental Theater  
4PM Two Gentlemen of Verona by Last Leaf Productions 530PM Othello by Last Leaf Productions 7PM Merry Wives of Windsor by GreenStage's Backyard Band  
8PM Opera's Greatest Hits by Opera on Tap **SUN • AUG. 18** 1PM SecondStory Repertory Student Showcase  
2PM The Magic Pudding by Theater Schmeater 330PM The Totally True and Almost Accurate Adventures of Pinocchio by Balagan Theatre  
430PM KIDprov! By Split 2nd Improv 6PM Cucumber Phil by Evergreen Family Theater 7PM Tiny Twelfth Night by GreenStage's Backyard Band



EXPERIENCE  
*Redmond*  
www.ExperienceRedmond.com

SECONDSTORY  
REPERTORY

4  
CULTURE  
KING COUNTY LODGING TAX

**FULL SCHEDULE + DETAILS**  
TEL 425.881.6777 • [www.ACTSOUT.COM](http://www.ACTSOUT.COM)



## Mike Andrew - 25th Season Dedication



GreenStage is dedicating our twenty-fifth season to the memory of Mike Andrew, who passed away in March of this year. Mike was one of the earliest members of the company, playing Sir Toby Belch in the 1991 and 1992 productions of *Twelfth Night*. Two years later, he and several of the actors from that season's *A Midsummer Night's Dream*, joined the board of directors in order to breathe new life into the company.

Mike served as GreenStage's Board President for several years, leading the formation of the organization's bylaws, overseeing our becoming a 501(c)(3) nonprofit, and helping transition us from the name Shakespeare Northwest into what is now GreenStage. He also created many props, creatures, and magic – some of these still appear from time to time; he created

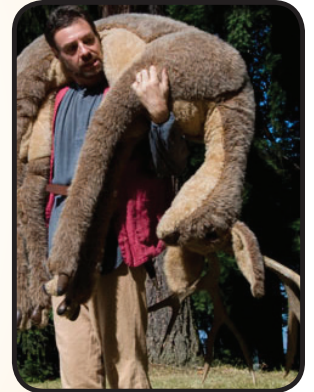
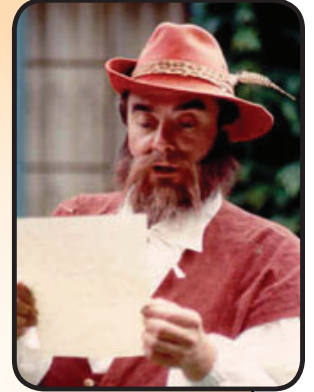
a particular costume being used in this summer's *A Midsummer Night's Dream*. And you might remember a life sized stuffed deer that has appeared in several productions, most recently in 2010's *As You Like It*.

Mike was a kind of shepherd as this company was beginning to grow and his presence will always be part of who we are. He was a true believer in life; and he never stopped laughing, learning, reaching out and growing. Most of all, he never stopped telling stories – so this year, we dedicate our stories to him.

Thanks, Mike. We miss you.

Lucky Universe.

- Erin Day, Artistic Director
- Ken Holmes, Managing Director



Photos: Top left - Mike Andrew in 2012, courtesy of Elizabeth Andrew. Top right - Mike as Sir Toby Belch in *Twelfth Night*, 1992. Bottom right - Gianni Truzzi with Fluffy the deer in *As You Like It*, 2010

## Mike Andrew Scholarship

GreenStage has established **The Mike Andrew Scholarship Fund** as a tribute to Mike and his indomitable spirit, his great capacity for joy, his boundless spirit and curiosity, and his absolute unwillingness to stop exploring and learning. This will be a needs-based scholarship administered by GreenStage's Education Director; so Mike's pioneering spirit can be passed on to some young, hungry minds.

To contribute to this fund, or learn more: [www.greenstage.org/mikeandrew](http://www.greenstage.org/mikeandrew)

contribute here



## About GreenStage

GreenStage's mission is to inspire audiences to engage in live theatre as part of their recreation. The company always performs for free, collecting voluntary donations after performances.

**Why free?** Because experiencing a play is something that anyone should be able to do. If you enjoy what we do, we invite you to make a donation. No member of our audience is ever required to pay, but anything you can afford to give is greatly appreciated and helps fund our programs.

[www.GreenStage.org](http://www.GreenStage.org)

follow us on Twitter

like us on Facebook





## Directors' Notes



### KING LEAR

I believe *King Lear* is one of the most perfect plays ever written. It is an adept, cruel, passionate, intense analysis of human beings. It is about choices and how we relate to what is around us; what we choose to take and what to give. The more time I spend with the play, the more I am awed and moved; the more I see flashes of my own life, the time in which we live, our relation to one another, and to all things.

This play is populated; every character has an independent and equally important life. There are wonderful roles throughout Shakespeare's plays; however, each character exists only in their relation to the main role. For example Gertrude, Ophelia, and Polonius are fully formed, marvelous roles, but only in relation to Hamlet. In *Lear*, this is not so; each character has their own story and journey of their own making; their own humanity.

This play makes me want to be better. It demands it.

Thank you for coming.

– Erin Day



### A MIDSUMMER NIGHT'S DREAM

When I was invited into the GreenStage family to direct *A Midsummer Nights Dream* it was, as they say, a dream come true. I knew I would be working with the best talent in Seattle. The audition process proved me right. My good friend, Adam Othman, joined me to assist in the fun and was the first to mention our "dream cast."

Collaboration, a true art form in itself, leads to a satisfied and fulfilled existence. What a blessing to have such an incredibly energized, giving group of artists to play and pursue my vision with. And play we did! We thought, what if Shakespeare had written *Dream* today? What might he reference to catch the attention of today's audience. The mystic and magic of the circus? The black and white silent film comedy pioneers? A sexy sword fight? Three different worlds sharing one stage.

So, I thank this wonderful team for exploring the many levels of love. Erin, Amelia, Michelle and Ken, thank you for the chance to play hard. Through the wonderful words of William Shakespeare and the unbridled physical joy of this brilliant cast I have seen the many faces of love and I have fallen hard.

I had a dream and here it is. Enjoy

– Ken Michels



## SHAKESPEARE IN THE PARK!



Directed by Erin Day

CAST – in alphabetical order

Meredith Armstrong ..... Goneril  
Vince Brady ..... Lear  
Anthony Duckett ..... Cornwall  
Ashley Flannegan ..... Cordelia  
Sam Hagen ..... Fool  
Steve Scheide ..... Edmund  
Johnny Patchamatla ..... Kent  
Eli Sklov Simons ..... Albany  
Brendan Toner ..... Oswald  
Gianni Truzzi ..... Gloucester  
Nicole Vernon ..... Regan  
Daniel Wood ..... Edgar



Directed by Ken Michels

CAST – in alphabetical order

Spencer Bradley ..... Flute, Fairy  
Taylor Davis ..... Puck  
Jalyn Green ..... Lysander  
Janeé Green ..... Moth  
Natalie Gress ..... Gnat  
Kyle Johnson ..... Demetrius  
Alyssa Kay ..... Hermia  
Danni Krehbiel ..... Fairy, Starveling  
James Lynch ..... Snug, Snout, Fairy  
Madeline Nutting ..... Helena  
Michael Ramquist ..... Peter Quince, Egeus  
David Rollison ..... Theseus, Oberon  
Gina Marie Russell ..... Hippolyta, Titania  
Luke Sayler ..... Bottom

### PRODUCTION TEAM

Megan Duncan ..... Stage Manager (*Midsummer*)  
Chelsea Johnson ..... Stage Manager (*Lear*)  
Adam Othman ..... Assistant Director (*Midsummer*)  
Julia Evanovich ..... Costume Designer (*Midsummer*)  
Elizabeth Power ..... Costume Designer (*Lear*)  
Ryan John Spickard ..... Fight Choreographer  
Laura Garcia ..... Prop Designer  
Jeff Thomas ..... Dramaturg  
Max Pagel ..... Technical Director/Scenic Designer  
Chris Garland ..... Tour Manager (*Lear*)  
Johannah O'Halloran ..... Tour Manager (*Midsummer*)  
Liam Enns ..... House Manager (*Midsummer*)  
Erin Mettling ..... House Manager (*Lear*)

### SPECIAL THANKS

Bartell Drugs • Cara Brown • Burien Little Theatre • Devlin Donnelly • Driftwood Players • Tony Driscoll •  
Shauna Freidenberger • Don and Kandice Gress • Lisa Holmes • Jeff Hodges • David and Sharon Lynch •  
Deborah Masten and the Staff at Community Psychiatric Clinic • Denise Martin • Joanne Orsucci • The Production Shop •  
Jane Reamer • Julianna Ross • Savage Color • Shoreline Covenant Church • S.P.A.C.E. • Seattle Parks and Recreation •  
Seattle Public Theatre • Seattle Scenic Studios • Jeff Taylor

# BACKYARD BARD

## Twelfth Night • The Merry Wives of Windsor



### Big Shakespeare; Little Parks.

Since 2008, GreenStage has offered a one-hour, four-actor production of *Twelfth Night* as a show-for-hire. "Tiny" *Twelfth Night* performed at theme parties, community functions, and the occasional backyard, serving as a gentle introduction to the best parts of the larger play, and bringing the story vibrantly to life in more intimate venues with verve and brevity.

Now we're taking the program on tour! Our inaugural year's four actors will bring all the laughter, all the adventure, and all the magic of two famous comedies to ten locations in the greater Seattle area. It is our hope, and our mission, to lift these beloved plays off the page and breathe them into life with reverent honesty, ferocious enthusiasm, and unwavering joy, and bring these performances to all the places where new friends of GreenStage might enjoy a bit of poetry in the sun.

Directed by Marc "Mok" Moser

CAST – in alphabetical order

Joey Fechtel

*Twelfth Night* ..... Sebastian, Sir Andrew, Captain, Officer

*Merry Wives of Windsor* ..... Falstaff, Page

Parker Matthews

*Twelfth Night* ..... Orsino, Sir Toby Belch, Malvolio

*Merry Wives of Windsor* ..... Ford, Host

Mandy Nelson

*Twelfth Night* ..... Olivia, Antonio, Maria, Valentine

*Merry Wives of Windsor* ..... Mistress Ford, Pistol

Anna Richardson

*Twelfth Night* ..... Viola

*Merry Wives of Windsor* ..... Mistress Page, Nym

### Production Crew

Juliette Lynch..... Costume Designer

Kathryn Mesaros..... Stage Manager

## Brief Breakdown of Backyard Bard

### Twelfth Night

Shipwrecked in Illyria, and separated from her twin brother Sebastian, Viola disguises herself as a man and hides in the court of her nation's enemy, Duke Orsino, who also happens to be the man of her dreams. The course of true love ne'er ran less smoothly than in this delightful tale of mistaken identity, passions poetically misdirected, and two or three or four hearts bourne aloft on the clumsy wings of romance.

### The Merry Wives of Windsor

Falstaff is experiencing an economic downturn. What better way to refill his empty purse than to woo two wealthy married women he's only just met? What could possibly go laughably, horribly wrong for this beloved, famous knight? Discover the heights to which a noble suitor will pretend to aspire, and the depths to which he'll also sink, just to win the hearts and coffers of women much, much smarter than he.



## Simple Summaries of the Summer Shows by Jeff Thomas



### KING LEAR

In pre-Roman Britain, the retiring King Lear plans to divide his kingdom among his three daughters, Goneril, Regan, and Cordelia. But after a spat with Cordelia, whom he had loved best, he gives her share of the kingdom to her sisters and marries her, without a dowry, to the King of France. Lear plans to alternate visiting Goneril and Regan, but they prove to be ruthless, harsh, murderous rulers, and inhospitable to Lear.

Meantime, the Earl of Gloucester's son Edmund fools Gloucester into thinking that his other son, Edgar, is plotting to kill him. Edgar must flee for his life, and disguises himself as a mad beggar, Poor Tom.

Enraged by the ingratitude of Goneril and Regan, King Lear runs out into one of the worst storms in memory, with no company but his Fool, Edgar in his disguise as Poor Tom, and one loyal retainer, Kent.

Cordelia returns at the head of the French army, intending to restore Lear to the throne. In a collision of forces, Lear, Cordelia, Edgar, Edmund, Goneril, and Regan determine each other's fate.



### A MIDSUMMER NIGHT'S DREAM

In ancient Athens, two pairs of lovers have two problems: Lysander and Hermia love each other, but Demetrius also loves Hermia rather than Helena, who loves Demetrius. Further, Hermia's father Egeus insists that she marry Demetrius, and Athens's law supports him.

Hermia and Lysander elope into the Athenian woods, followed by Demetrius and Helena. Confusion and danger await, for the woods are a fairyland full of creatures such as the mischief-making Puck.

The same night, some craftsmen take to the woods to rehearse a play that they will put on for Athens's ruler Theseus. Just for fun, Puck turns Nick Bottom, one of the play-rehearsing craftsmen, into a donkey.

Oberon, the king of fairies, and his consort Titania are angry with each other. Oberon has Puck magically cause Titania to fall in love with the transformed Nick Bottom. Oberon also wants Puck to straighten out the lovers, but Puck confuses the situation more than ever.

Who will end up with whom? It's a mare's nest of problems that will take the rest of the night to sort out.

**Our plays are always free,  
but your contributions make  
the magic possible.**

Donate at  
[www.greenstage.org/donate](http://www.greenstage.org/donate)

### 2013 SPECIAL EVENTS

#### SHAKES-BAR HAPPY HOUR

August 10, 5pm

Drinks, snacks, and raffle prizes to celebrate 25 years of free theatre.

**Donors only!** Become a donor at [greenstage.org/donate](http://greenstage.org/donate)

#### PUB CRAWL July 19, 2013

Check [www.greenstage.org](http://www.greenstage.org) for details!

#### BLOOD BENEFIT!

During *The Bacchae* this October. Help pay the rent for Hard Bard.





## Youth Summer Camps for kids ages 8-15 July 15-August 16

**Queen Anne Community Center  
Magnuson Park Community Center  
Volunteer Park**

Kids take a week-long journey into the world of Shakespeare and theatre as they delve into one of the Bard's best plays! Great for aspiring actors.

All levels of experience are welcome!  
[greenstage.org/camp](http://greenstage.org/camp)

**DO IT THE BARD WAY!**



# 5<sup>TH</sup> OF JULY

*A Major Work By One Of America's Most Celebrated Playwrights.*

*Sharp and Funny. Deeply Revealing.*

**by Lanford Wilson**

**Directed by Julie Beckman**

**October 4th - 26th**  
**Thursday, Friday & Saturday 8:00 pm**

Sponsored by **SGN**  
Seattle Gay News

5th of July is presented by special arrangement with Dramatists Play Service, Inc.



**Engage! Inspire! Transform!**

[www.theatre22.org](http://www.theatre22.org)

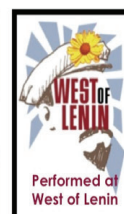
2 0 6 . 2 5 7 . 2 2 0 3

BROWN PAPER TICKETS

[5thofjuly.brownpapertickets.com](http://5thofjuly.brownpapertickets.com)

Theatre22 is an Associated Program of

**Shunpike**  
THE BUSINESS OF ART





## A MIDSUMMER NIGHT'S DREAM - CAST



**Spencer Bradley** (*Flute/Fairy*)

Spencer is thrilled to be involved with GreenStage's *A Midsummer Night's Dream*. He has performed at Seattle Public Theatre and Freehold Theatre in roles including Claudius in *Hamlet*; Groundskeeper Lumpkin in *Smash!*; Sweeney Todd in *Sweeney Todd: The Demon Barber of Fleet Street*; Horatio in *Another Dead Caesar*; and Angelo in *Measure for Measure*. He would like to thank GreenStage and his loving mother and girlfriend for their support!



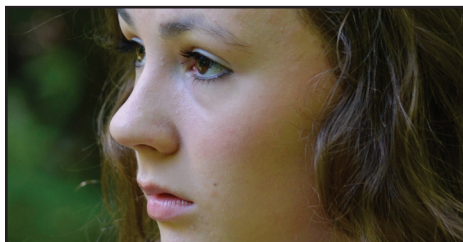
**Taylor Davis** (*Puck*)

Taylor is so excited to be performing her favorite role again, this time for GreenStage. Taylor received a BFA in Musical Theatre from the University of Oklahoma and has been fortunate to have performed in, directed, and choreographed many shows over the years. Her favorites include Puck in *A Midsummer Night's Dream*, Kate in *The Taming of the Shrew*, Queen Anne in *Richard III* (Oklahoma Shakespeare in the Park), Penelope in *See How They Run* (Valley Center Stage), Jeffrey in *Godspell* (Evergreen Family Theatre), and directing *Death By Chocolate* (EFT) and *Closer* (Orasi). Much love to her husband, friends, family, cast, and everyone at GreenStage!



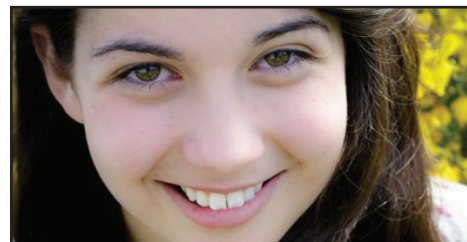
**Jalyn Green** (*Lysander*)

Jalyn returns for his third consecutive summer with GreenStage, after previously acting in *The Taming of the Shrew* and *Antony and Cleopatra*. A company member with Ghost Light Theatricals, he has worked with a number of companies, including Theater Schmeater, Balagan, Secondstory Rep, Tacoma Little Theatre, Shakespeare Northwest and many more. Next up he will be making his Burien Little Theatre Debut as Igor in the musical *Young Frankenstein*. Love to his cast and crew, his family, and especially his Otter. Enjoy the show.



**Janeé Green** (*Apprentice - Moth*)

Janeé is 16 and a junior at Kentwood High School. She is ecstatic to be working with GreenStage for the first time. Recent shows she has performed in include *Hairspray*, *A Midsummer Night's Dream*, *Woman and Wallace*, and *Man of La Mancha*. Janeé loves theatre and Shakespeare and wants to continue theatre after high school. She would like to thank Ms. Lloyd and GreenStage for the opportunity to work on *A Midsummer Night's Dream* this summer.



**Natalie Gress** (*Apprentice - Gnat*)

Natalie is a senior at Liberty High School. She has performed in *Seussical Jr.* (JoJo), *Ella Enchanted* (Ella), *The Crucible* (Betty Parris), *The Mystery of Edwin Drood*, *Bye-Bye Birdie* (Mae Peterson), *Romeo and Juliet* (Juliet), *Little Shop* (Puppeteer), *Snow Angel*, and most recently *The Wizard of Oz*. Natalie also participates in Improv, Journalism, and the Marching Band at her high school. She would like to thank her family, friends, teachers, coaches, directors, YAI2012, GreenStage for this wonderful opportunity, and God for all the love and support. Enjoy the show!



**Kyle Johnson** (*Demetrius*)

Kyle is honored to make his debut with GreenStage. Kyle is a recent graduate of Cornish College of the Arts holding a BFA in Acting. Over the past few years, Kyle has been involved in numerous productions in the Seattle area. You may have seen Kyle in Seattle Shakespeare's *Wooden O* production of *Macbeth* as Young Siward, *Quiet's subUrbia* as Tim, and *Arouet's The Gene Pool* as Peter.





## A MIDSUMMER NIGHT'S DREAM - CAST (continued)



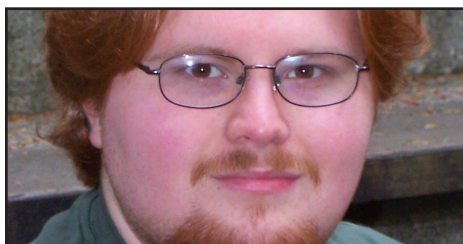
**Alyssa Kay** (Hermia)

Alyssa has previously appeared in GreenStage's productions of *The Tempest* (Miranda) and *Henry VIII* (Anne Boleyn), and she's delighted to be returning for a third season! Other recent productions include *Disco Pigs* (Sound Theatre Company/GianT Projects), *Sherlock Holmes and the Case of the Christmas Carol* (Taproot Theatre), and the feature film *Shadowed*. Alyssa earned her BA in Drama from the University of Washington, trained at the Accademia dell'Arte in Arezzo, Italy, and has performed with numerous local companies over the years including Book-It Repertory Theatre, Seattle Opera, Women Seeking..., Live Girls! Theater, Ghost Light Theatricals, and Centerstage. Love to her Fox.



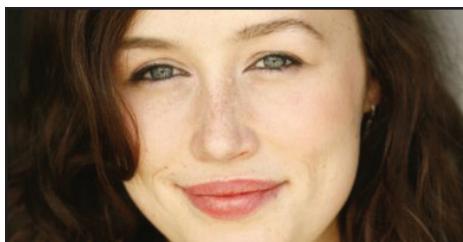
**Danni Krehbiel** (1st Fairy/Starveling)

Danni is thrilled to be a part of one of her favorite shows of all time with a company she has admired for many years. She will be a junior next year at Cornish College of the Arts studying musical theatre; where she was last seen in *Working the Musical*. Some of her favorite parts include Minnie Fay in *Hello Dolly* (Tacoma Musical Playhouse), and Chava in *Fiddler on the Roof* (Western Washington Center for the Arts). This summer she is prepping to study abroad at Accademia Dell'Arte in Arezzo, Italy next winter. "Thanks for putting up with me Mom and Dad, Love you!"



**James Lynch** (Snug/Snout/Fairy)

James is thrilled to be making his GreenStage debut in his favorite Shakespeare comedy. He was last seen as Snug the Joiner in Rouge Theatric's *A Midsummer Night's Dream*. Other Credits include: Gregor in *The Dancing Princess* (SecondStory Repertory) Dasher in *The Eight: Reindeer Monologues* (Shoreline Community College) and Mr. Fogg in *Sweeney Todd: School Edition* (Second Story Repertory). James will be starting his college career as a freshman at Seattle Pacific University this fall as a theater major. This one goes out to his mom.



**Madeline Nutting** (Helena)

Madeline is so excited to be playing with GreenStage again this summer. She holds a BFA in performance from the University of Idaho and has been seen on stage around town for the last year or so in shows such as GreenStage's *Taming of the Shrew*, Arouet's *The House of Bernarda Alba*, and as an actor in the Seattle Opera. This show holds a special place in her heart as it was the first show she ever acted in, playing Hermia at the age of 11 in the Port Angeles Children's Theatre. She would like to give a shout out to everyone who has encouraged her dreams for the last 15 years. Thank you all!



**Michael Ramquist** (Quince/Egeus)

Given the chance, Michael would perform Shakespeare inside of your kitchen cupboard and it is likely that most of the other players would agree. Fortunately, for the last 25 years, the amazing people that are GreenStage have found whole public parks in which to perform for more than just the mice. Dreams seldom turn out like this (trust me on this one.) Although there are many incredibly talented individuals making this production memorable, this dream would never have arisen were it not for the disciplined, caring, inspired, insanity that is our director Ken Michels. Finally, Michael would like to dedicate his performance to Gary Pearson, whose portrayal of the most committed friend and family man goes unmatched after his death. Enjoy the show!



**David Rollison** (Oberon/Theseus)

David is thrilled to be making his GreenStage debut in their 25th anniversary season. A graduate of Cornish College of the Arts, he has mostly stuck to Improv for the last several years. He is a former full-time member of Jet City Improv and continues to perform in their late-night cult hit *Funbucket*. Look for him later this year in the horror comedy *Junk Bonds*. Love to his grandmother who always wanted to see him in another Shakespeare play. And to Julia. She knows why, too.



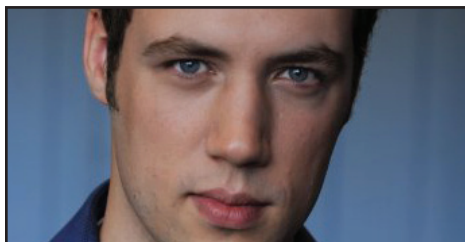
## 2013 SEASON 25 years of free theatre



**Gina Marie Russell** (*Titania/Hippolyta*)

Gina is thrilled to be acting with GreenStage once again. She recently finished Scotto Moore's sci-fi one-acts, *Starcrossed* at Annex and *The 25th Annual Putnam County Spelling Bee* (Rona Lisa Peretti) with Ken Michaels at Bainbridge Performing Arts. Last year, she performed in *The Who's Tommy* (Mrs. Walker) also at BPA; *Hansel & Gretel* (Freda) with Theater Schmeater; *Arouet's House of Bernarda Alba* (Martiro); and *Hecuba* in quiet's *Trojan Women*. Favorite past shows: Seattle Shakespeare Company's *The Threepenny Opera* (Lucy Brown); *Money Changes Everything* (Candy Hart), and c. 1993 at Annex; *The Tempest*

(*Ariel*) and *As You Like It* (Audrey) with GreenStage; Emerald City Scene's *Sister Cities* (Carolina); and Rough Play's *King Lear* (Regan). Next up: *Les Miserables* with Balagan in September!



**Luke Sayler** (*Bottom*)

This is Luke's second summer with GreenStage. Last year's *Henry VIII* was Luke's outdoor debut portraying Suffolk and Gentleman. Other recent stage roles include Algernon in *The Importance of Being Earnest*, Teucer in *Ajax*, Bentley the Clown in *Not All Clowns are Bozos II and III* and Simon in *The Real Inspector Hound*. Luke is a graduate of Cornish College of the Arts. Big love to Granny Jean and nephew Elijah.

Shakespeare Northwest  
presents

The 13th  
Skagit River  
Shakespeare Festival

**HAMLET**  
&  
The Merry Wives  
of Windsor

July 11 – August 17, 2013

For more information, visit:  
**shakesnw.org**

Green Stage

Green World Green Medicine



Scientific, sustainable, whole-system solutions to chronic disease

"Stop chasing symptoms – find and treat the cause"

**Tom Ballard, RN, ND - As you like it for 30 years**

Author of **Nutrition-1-2-3: Three proven diet wisdoms for losing weight, gaining energy, and reversing chronic disease**

**Seattle: (206) 324-2225**

**Renton: (425) 255-8100 Ex6**

[www.PureWellnessCenters.com](http://www.PureWellnessCenters.com)

**Covered by most insurance**



## KING LEAR - CAST



**Meredith Armstrong** (*Goneril*)

This is Meredith's seventh show with GreenStage and it's definitely a lucky one! She is excited to be back in the parks after three autumns Hard Bard-ing indoors, and to be playing a role that has been on her Bardic Bucket List since the late 1980s. She thanks director Erin Day for the chance to check it off. Meredith is a theatre alumna of Western Washington University and the National Shakespeare Conservatory. When not acting, you'll find her bellydancing, rock climbing, practicing aerials, baking, or writing. Favorite past roles include Elmire (*Tartuffe*, SecondStory Rep), Catherine (*Proof*, Renton Civic Theatre), Katherine (*Henry V*, GreenStage), and Mercutio (*All-female Romeo & Juliet*, *Hose & Britches*). She dedicates this performance to her friend, teacher, and mentor, Gretchen Orsland.



**Vince Brady** (*King Lear*)

Vince was born in England and worked as an actor and director in the U.K. and Europe. He studied Voice with Barbara Houseman (RSC & Shakespeare's Globe) and Shakespeare Performance with Patrick Tucker (RSC, Original Shakespeare Company & Shakespeare's Globe). Since moving to the Pacific Northwest, Vince has worked with many wonderful organizations including Seattle Shakespeare Company, Village Theater, Centerstage, Harlequin and Wooden O. He also spent five years as Artistic Director of Exchange Theatre.

His favorite Shakespeare roles include Claudius (for GreenStage), Bottom, Trinculo, Richard II, both Antipholus's (in different productions!), Benedick and Macbeth. Vince would like to thank you for coming out to the park today and hopes you enjoy the show. Also very special thanks to his wife, Sally and his two sons, Jack and Drew.



**Anthony Duckett** (*Cornwall*)

Anthony is heartily satisfied to be returning to GreenStage for his fourth time; previous roles including Anselmus in *Cardenio*, Trinculo in *The Tempest* and Arthur in *King John*. Anthony has also been seen on many other stages throughout Seattle including Seattle Public Theater, Book It Repertory Theatre, ACT, ArtsWest, Theater Schmeater, and more. Anthony is a lover of the smell of bacon, fresh sawdust, and old leather, and can be seen on sunny days singing show tunes on his motorcycle.



**Ashley Flannegan** (*Cordelia*)

Ashley is excited to be working with GreenStage for the third time. She has had the great fortune to work locally with companies like Balagan, Book-It Repertory Theatre, Island Stage Left, Live Girls! Theater and Unexpected Productions, and regionally with PCPA Theaterfest and the Southwest Shakespeare Company. When she is not playing in the parks, Ashley is watching a Sounders match, catching

up on Dr. Who, reading a good book or memorizing sonnets as part of a challenge to memorize all of Shakespeare's 154 Sonnets in 154 weeks. She sends love and gratitude to her friends, family and especially her handsome hubby. Ashley dedicates her performance to Patricia Troxel whose intellect, kindness, humor and passion lives on in the countless lives she touched.



**Sam Hagen** (*The Fool*)

Sam is returning with pleasure to GreenStage for the free t-shirt and to be a part of the best Shakespeare he has seen in Seattle. This will be his sixth performance with the company (8th if you count the Backyard Bard stuff). He can only hope that you enjoy the show, and these "special" people, as much as he does. Thanks to Alex for all her love and support.



**Johnny Patchamatla** (*Kent*)

Johnny thanks you for joining us today as GreenStage celebrates their 25th(!) season of bringing the classics to the greater Seattle masses - for free - thanks in no small part to the generous support of gracious patrons like you! Once again playing a man banished for his loyalty, Johnny was last seen on the bloody REDstage of GreenStage's Hard Bard production of *Titus Andronicus* (Tony Driscoll). He first joined the GreenStage band of merry-makers as York in the



epic production of *Henry VI, parts 1, 2, & 3* (directed by Ken Holmes), and has appeared in dozens of other productions with various other companies in town including Village Theater, Balagan, Theater Schmeater, SIS Productions and many more. He is also a grateful performer with Effective Arts. Much love and thanks to Peanut.



## **Stephen R. Scheide** (*Edmund*)

Stephen is excited to make his GreenStage debut in their 25th season. He has been training and creating theatre in Seattle for almost a decade. Past credits include *The Last Days of Judas Iscariot* (El-Fayoumy), *Vitriol* (Goldschagg), *Trilus and Cressida* (Achilles). Stephen was most recently seen in *Star Crossed, and other tales from a devious universe* at Annex Theatre. Stephen holds a degree in sociology from the University of Washington and enjoys hiking, sailing and sushi. Next, you can watch him perform some action at Bumbershoot, Labor Day weekend, with Performers' Forge. Many thanks to those that make him smile every day.



## **Eli Sklov Simons** (*Albany*)

Eli was born in, has spent much of his life in and around Seattle, and is thrilled to be spending his summer in some of the areas many fine parks. Some of Eli's early years were spent in Michigan and it was during those years that he fell in love with Shakespeare. Seeing *The Tempest* and *Twelfth Night* (and many others) at

The Stratford Festival in Ontario, Canada gave him an interest and a passion that he still has to this day. Eli has been with GreenStage for over 20 years and every single one of those years has been a blessing. Thank you for being part of it all.



## **Brendan Toner** (*Oswald*)

Brendan is pleased to be returning to GreenStage after last summer's fabulous *Henry VIII*. He has been seen around town with Washington Ensemble Theatre, Endangered Species Project, Fantastic Z and has most recently appeared in *Mating Games* with Seattle Playwrights Collective at Annex Theatre.



## **Gianni Truzzi** (*Gloucester*)

This is Gianni's third romp in the parks with GreenStage, where he also performed in *As You Like It* and *The Tempest*. He was most recently seen speaking "Dogg" in *Dogg's Hamlet, Cahoot's Macbeth* with Sound Theatre Company, with whom he also performed as Pridamant in *The Illusion* and directed last fall's critically acclaimed *Disco Pigs*. Favorite roles include Chicken in *5xTenn* (or so) at Stone Soup, Atticus Finch in *To Kill a Mockingbird* at Attic Theater, and David Bliss in *Hay Fever* at Renton Civic Theater. He has also performed with Seattle Public Theater, and Arne Zaslove's Hit & Run Theatre. Thanks to his awesome family, Z and S, for indulging his very busy summer.



## **Nicole Vernon** (*Regan*)

Nicole is walking on air to be here, with this cast, with this story, and with you! Some of her other GreenStage credits include *Cardenio* (The Lady), *As You Like It* (Celia), *Hard Bard Titus Andronicus* (Lavinia), and *Twelfth Night* (Viola). You may occasionally find her kickin' up her heels with The Eclectic Cloggers or slinging cherries at the Market. This one is for Craig.



## **Daniel Wood** (*Edgar*)

Summer outdoor theater is Daniel's favorite medium to perform in and he's thrilled to be returning to GreenStage for a third straight year. GreenStage audiences may recognize him as Stephano in *The Tempest*, Buckingham in *Henry VIII* and Hippolito in the HARD BARD production of *The Revenger's Tragedy*. Some other favorite roles include Benedick in *Much Ado About Nothing* (SecondStory Rep), Harry Hay in *The Temperamentals* (Arouet) and the title role in *The American Pilot* (Theater Schmeater). He has also performed with Wooden O, Book-It Rep, Seattle Public Theater, Balagan Theatre, Sound Theatre Company, Annex Theater, Centerstage, Harlequin Productions and the Seattle Opera. Much love to his beautiful and gifted wife Julia Evanovich. Catch him next as Richard Hannay in *The 39 Steps* at Centerstage.



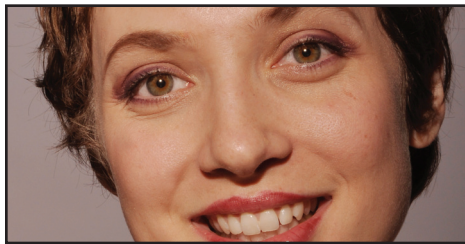


## BACKYARD BARD - CAST



### Joey Fechtel

Joey is really excited to be working on Backyard Bard! He has recently been seen around the Sound in *Gloucester Blue* by Israel Horovitz at Harlequin Productions in Olympia, *Suddenly Last Summer* with Theatre 9/12, *The Last Days of Judas Iscariot* with Ghost Light Theatricals, *The Abdication* with Handwritten Productions, and is a member of Studio 4 Seattle with D. Nail. Joey loves stage combat, new works, guitar, singing, hand stands, and a bunch of other stuff! Tell him about you?



### Mandy Nelson

Mandy is pleased as punch to be working with GreenStage this summer. She recently finished a run as Theresa in Redwood Theater's production of *How the Other Half Loves*, and has been in shows at Ghostlight and Tacoma Little Theater. A graduate of the University of Washington School of Drama, she spends her days working hard for the man. She sends her best love to Blake and her family.



### Anna Richardson

Anna is very excited to play in the parks this summer in her first GreenStage show. Previous shows in Seattle include *Troilus and Cressida* and *How to be Cool*. Other favorites are the one woman show *Bold Grace*, *Jesus Christ Superstar*, *The Lady's Not for Burning*, and most recently, Harlequin Productions' *Gloucester Blue*. Love and thanks always to her Mom, Dad, Emma, and Adam for their unending love and support. Enjoy the show!



### Parker Matthews

Parker is downright ridiculously stoked about joining GreenStage this summer, mainly because In-The-Park shows are a wonderful confluence of his three favorite things: Shakespeare, fake beards, and heat stroke. Matthews is cofounder and Imagination Czar of Drybones, an artists' collective dedicated to producing unconventional and hopeful art across Seattle. He is thankful to share at least two of his three favorite things with you this summer and hopes that you are blessed (and highly entertained) by these works.



Strategic communication and public affairs consultants for arts, nonprofits, education & government

206.714.0448 | [www.ScheidererPartners.com](http://www.ScheidererPartners.com)





## Gateway to Shakespeare for kids!

The **Kingdom of Hamelot** is a series of digitally enhanced eBooks for kids. It's like *Harry Potter* meets *Downton Abbey*—only set during the Elizabethan era. Available for iPad, Kindle and Nook at major online retailers. Visit us at **[KingdomOfHamelot.com](http://KingdomOfHamelot.com)**.

### Fun & Interactive

- Narration
- Illustrations
- Animation
- Videos
- Minecraft server

### Educational

- Vocabulary definitions
- Historically accurate
- Test yourself!
- Challenging language of the era
- Details about the time period



## PRODUCTION TEAM

### Erin Day

(Director - *Lear*, Artistic Director)

Erin is humbled by the array of dedication and talent she has been privileged to spend the summer with. Since moving from Washington DC, she found a home in GreenStage and finds nothing grander than playing with them and with you. Around town, she has performed at Seattle Public Theater, Theatre Babylon, Seattle Fringe Festival, The Washingtonians! and others. She is currently a member of The Midnite Mystery Players and is honored to serve as Artistic Director for GreenStage. Thanks to her amazing family and especially to you. Enjoy the show!

### Ken Michels

(Director - *Midsummer*)

Ken is thrilled to have a chance at launching a visual attack on the Bard's Dream. Most recently Ken has directed *The Full Monty* and *The 25th Annual Putnam County Spelling Bee* for Bainbridge Performing Arts. At SecondStory Rep he directed *A Christmas Carol*. And *Footloose* for Kitsap Forest Theatre. In the near future is *Shrek* at BPA. Another holiday season with old Mr. Scrooge. And in the new year, *Avenue Q* at BPA. He has collaborated with his good friend Theresa Thuman on *The Complete Works of William Shakespeare The Illusion, The Foreigner, The Tempest* and *Dogg's Hamlet, Cahoots Macbeth* for her Sound Theatre Company. And also joined in the fun with her on *The 39 Steps, The Producers, Noises Off, Tommy* and *Tartuffe*. To be able to create and share wonderful art with good people is a dream that Ken hopes is never ending.

### Marc "Mok" Moser

(Director – *Backyard Bard*)

Mok is a 28-year veteran of community theater in Western Washington, and is deeply tickled to be a part of this exciting new program, to help build these two hilarious shows, and to then take credit for all the actors' hard work. He is deeply grateful to Ms. Day, Ms. Rodriguez and Mr. Holmes for their advice, enthusiasm, and support in the construction of this new tour.

### Adam Othman

(Assistant Director – *Midsummer*)

Adam is thrilled to be working on *A Midsummer Night's Dream*. He has worked throughout the Northwest as an actor, teacher and director. He feels fortunate to make a living following his artistic passions. Currently he is the Drama and Film Director at Seattle Preparatory School. Special thanks to Ken Michels, the GreenStage artistic team, and the entire *Midsummer* cast for this amazing experience.

### Julia Evanovich

(Costume Designer - *Midsummer*)

Julia Evanovich is a Seattle-based designer, painter and teaching artist. She is excited to be working with GreenStage again. She is honored to be a part of this production of *A Midsummer Night's Dream*. Some of Julia's favorite recent ventures are: *Cabaret* (School Yard Gang); *Fallen Angels*, *Hansel and Gretel*, *Lark Eden*, *Live! From the Last Night of My Life*, *Pageant Play* and *The American Pilot* (Theater Schmeater); *I'm into Something Good* (Centerstage); *The Tempest* (GreenStage). She'd like to thank her partner in life and arts Daniel Wood for his patience, encouragement and love.

### Elizabeth Power

(Costume Designer - *Lear*)

A long-time fan of GreenStage, this is Elizabeth's chance to play with grown ups. Most of the time she works back stage at Snohomish High School, Glacier Peak High School, Driftwood Players and various other volunteer sewing opportunities. You can find her making something everyday. Recently she completed *Bye Bye Birdie* for a cast of 50. She is super excited to have the opportunity to work with such a fine group of creative people. She would like to thank her son Cormac Power for helping with the special effects costume details. Enjoy the show!

### Juliette Lynch

(Costume Designer – *Backyard Bard*)

Julie is sixteen years old and has homeschooled her entire life. This is Julie's first time working with a professional

theatre company and she is absolutely loving it. She has been sewing and quilting for about six years and plans on becoming a designer. She will be starting the Running Start program at Edmonds Community College this fall and hopes to attend Seattle Pacific University after that to major in design.

### Jeff Thomas

(Dramaturg)

Jeff is a writer whom lifelong study of Shakespeare turned into a dramaturg. He writes because you can put people in an enchanted wood and give yourself a donkey's head (as in *A Midsummer Night's Dream*) or otherwise make yourself a Fool (*King Lear*). He keeps coming back to Shakespeare because his plays are so endlessly rewarding, emotionally affecting, and fun. Working with the casts and directors of this year's GreenStage productions has shown Jeff more in theatre and Shakespeare than he had known of before. Previous dramaturgical credits: Last Leaf Productions/Renton Civic Theatre (*Treasure Island*).

### Ryan John Spickard

(Fight Choreographer)

A native to the Northwest, Ryan holds a BFA from Cornish College of the Arts and is a member of the Society of American Fight Directors and the United Stuntmen's Association. As a working fight choreographer and actor in the Seattle area, Ryan has performed with various theaters such as the Seattle Shakespeare Company, Book-It Repertory Theater, GreenStage, Balagan Theater, Theater Schmeater and others. Regional Credits include work with the Idaho Shakespeare Company and the Colorado Shakespeare Company where he was nominated as best supporting comedic actor for *The Comedy of Errors* by the Denver Post. In 2009, along with other members of the stage combat community in Seattle, he formed Performers' Forge, a theater company dedicated to the performance and education of staged violence, of which he is currently Co-Artistic Director.



### Laura Garcia

(Prop Designer)

Happy 25th Birthday GreenStage! Laura must be in love with you because she has done over 20 shows with you (she stopped counting), ever since falling for you one lovely twilight evening at Lincoln Park in 1997. Notable gigs; directing the 2002 *Taming of the Shrew*, Asst. Director for the Fringe Theater Festivals and Stage Manager and Props Designer on many, many GreenStage shows, including many of the extra fun and BLOODY Hard Bards. A Seattle native, she began her career in New York City, studying Directing and Acting at Herbert Berghof Studios. Her first job was working Off-Broadway at The Manhattan Theatre Club. Laura is also a proud mom of three grown and beautiful daughters, whom she adores. BUAIDH NO BAS!

### Megan Duncan

(Stage Manager- *Midsummer*)

After finishing her freshman year at Western Washington University, Megan has decided to pursue a career in theater and film, and she is stoked to be stage managing *A Midsummer Night's Dream* with GreenStage this summer. Her recent theatrical endeavors include interning with Black Dog Productions – writing, directing, producing short films, assistant directing the campus cable show *Western Window* as well as stage managing *Oklahoma*, *Fiddler on the Roof*, and *Footloose* at Kitsap Forest Theater while in school. She is looking forward to her sophomore year at Western in the fall, and a new year of scripts, caffeinated choreography and productions.

### Chelsea Johnson

(Stage Manager - *Lear*)

Chelsea Johnson (Stage Manager) is a Performance Production student at Cornish College of the Arts. She is excited to be a part of her first GreenStage production and hopes you all enjoy the show.

### Kathryn Mesaros

(Stage Manager- *Backyard Bard*)

Kathryn is excited to once again be hanging out in the Seattle parks stage-

managing for GreenStage and Backyard Bard. Some of her favorite shows to work on have been *Saving Aimee* (5th Ave Theatre), *Freud's Last Session* (Taproot), *Children of Eden* (Village Theatre's KIDSTAGE), *Henry V* (Island Stage Left) and *King John* (GreenStage). She studied theatre at Whitworth University (class of '08). Lastly, she would like to say thanks to her family and friends who have always supported her.

### Max Pagel

(Technical Director)

Max is excited to be working with GreenStage for their summer season! He started with GreenStage as the Properties Master for the 2012 Hard Bard show *Cardenio* and is excited to be working in a broader role as Technical Director for this summer's season. He is especially excited to pursue the many opportunities that the new Back Yard Bard shows present to the Seattle theatre community. You can find him working at West of Lenin (in Fremont) as their Master Electrician, and working in the PNTA rental department. Recent Properties Designs include *The Understudy*, *Santaland Diaries*, *The Best Christmas Pageant Ever* at Seattle Public Theatre, and *Dracula* with The Bathhouse Ensemble.

### Chris Garland

(Tour Manager – *Lear*)

Chris is extremely proud to be spending his third season with GreenStage - whom he considers his second family. Chris has been busy, recently having joined Book-It Repertory as the audio engineer/board operator for *Anna Karenina*, *Huck Finn: Uncensored*, and most recently *The Financial Lives of Poets*. You can also find Chris' name on his favorite shows, the two recent Hard Bards – *The Revenger's Tragedy* and *Cardenio* – as the sound designer. But he'd rather be nowhere else than in the parks, right now, with some of his favorite people. Because this is truly what he loves.

### Johannah O'Halloran

(Tour Manager - *Midsummer*)

Johannah is a recent college graduate

whose love of Shakespeare's plays has endured since she was quite young. She is enthusiastic about supporting greater accessibility of theatre in general and Shakespeare's work in particular in any way she can.

### Liam Enns

(House Manager - *Midsummer*)

James (Liam) is thankful to be involved in a sixth year of GreenStage productions. He has worked with the company under different titles including house manager, stage manager, and blood wrangler. He is a recent graduate of Western Washington University where he studied History and Political Science with an emphasis in International Relations. Go see a play!

### Erin Mettling

(House Manager - *Lear*)

Erin is beyond thrilled to be helping with *King Lear* this summer. Shakespeare holds a warm place in her heart, and she's excited to have this experience. Literature...Theatre...Words (written, spoken, or rarely used): all speak to her soul and are relevant to her interests. Erin has worked on shows in high school and undergrad, but this is the first production she has been part of since moving to Seattle, and she thanks Amelia for thinking of her for the job. Erin dreams to one day be a librarian for a theatre company. Her eye is on the Globe!

## GREENSTAGEE STAFF

### Erin Day

(Artistic Director)

See Production Team bios

### Ken Holmes

(Managing Director)

Ken is an actor, director, graphic designer, photographer, and proud father. He has been working with GreenStage since 1993, and with the company has acted in many shows, directed a few, built sets, made props, painted floors, planned seasons, written checks and filled out grant applications and tax forms. Ken has also appeared at several other theaters in Seattle, and also works as a freelance graphic designer and photographer.

### Marc "Mok" Moser

(Backyard Bard Director)

See Production Team bios

### Eve Hammond

(Education Director)

For over 20 years, Eve has directed, educated and taught Theatre Arts and Integrative Arts throughout the Seattle/Mercer Island/Bothell and Woodinville area schools and theatres. Working for Seattle Children's Theatre, Youth Theatre Northwest and both Northshore and Seattle School Districts, she created and managed student theatre companies serving families with multiple ranges of kids from preschool to college. She was Education Coordinator for the Washington Shakespeare Company in Olympia, WA, and helped to implement their popular "Apprentice" program in which high school actors and technicians worked alongside adults in "real world" theatre experiences. She was also Artistic Director of Vagabond Productions and Northshore Networks Youth Theatre as well as being on the Washington State Board of Education teams for creating and implementing theatre arts standards to all teachers. She has a lovely husband and two talented and creative kids plus a dog and assorted cats. She loves her clan full of friends and looks forward to bringing her enthusiasm for teaching Shakespeare to young people through the open door of GreenStage.

### Greg Scheiderer

(Marketing Director)

Greg is a theatre fan, and in addition to serving as marketing director for GreenStage is a member and past president of the board at Balagan Theatre. At Balagan he played "The Mayor" in the opening performance of *Dr. Horrible's Sing-Along Blog* in 2010, which fortunately did not harm attendance at following shows! In addition to theatre Greg enjoys stargazing and writes the blog [SeattleAstronomy.com](http://SeattleAstronomy.com). He also enjoys baseball, music, writing, reading, gardening, and wine. He and his wife Cynthia live in West Seattle where they run Scheiderer Partners, a strategic communication and public affairs consulting firm. He has more than 30 years of experience in journalism, media relations, public relations, and public policy advocacy.

### Michelle Rodriguez

(Production Manager)

Michelle is happy to be back for another summer in the parks. This is her fourth time working with GreenStage and the first year as Production Manager. In years past she has stage managed for GreenStage on *Taming of the Shrew* (2012), *Hamlet* (2008) and *Richard III* (2007). Since receiving her BA in theatre at the University of Southern California in 2006, she has worked at theatres in and around Los Angeles, Portland, and Seattle. Local haunts include Burien Little Theatre, Centerstage Theatre Arts Conservatory, ReAct, SecondStory Repertory, and Taproot Theatre. She would like to thank her wonderful husband, Thomas, and her adorable puppy, Fergie, for their considerable awesomeness.

### Amelia Meckler

(Company Manager)

Amelia also works as an actor, director, stage manager and voice-over artist. After graduating with a BFA in Theater Performance from Hofstra University in New York, Amelia moved to Seattle and began working with GreenStage as a Stage Manager for *Richard II*. Since

then, she has acted in many shows with GreenStage, as well as directed *Squish!*, *Merchant of Venice* and *Twelfth Night*. Amelia spent time in the early 2000's on the GreenStage Board of Directors as President and Treasurer, and is very happy to be settled into her staff role of company manager, managing talent and casting. She has also worked with several other Seattle theaters such as Theater Schmeater, Balagan, Macha Monkey, Taproot and others. Amelia believes live theater is a vital part of community and the human condition. Go see a play.

### Meredith Armstrong

(Facilities Manager)

See King Lear bios





# HARD BARD GOES GREEK

BY EURIPIDES — DIRECTED BY TERESA THUMAN

**WARNING:** contains revenge, intrigue, wine, sex, cross-dressing, general debauchery and cannibalism.

October 12 – November 2, 2013

STAGE ONE THEATRE | North Seattle Community College

**RESERVATIONS RECOMMENDED**

[hardbard.brownpapertickets.com](http://hardbard.brownpapertickets.com)



## There will be blood... and sandals!

One of the greatest Greek tragedies, *The Bacchae* follows the god Dionysus as he travels to Thebes to restore the honor of his dead mother, Semele, and challenge the authority of Pentheus, the young King of Thebes. (Beware Gods with Mommy issues.) They don't believe Dionysus is really a god, and ban all worship of him--just because his mother was a mortal with whom Zeus had an affair.

As a god, Dionysus feels he deserves worship, and sets out to get revenge on Pentheus. First, he creates some Maenads - wild women who, among other things, hold drunken dance parties in the woods. And dismember and devour those who disturb them. One of these women is the King's mom. Dionysus joins the party, while sending his followers into Thebes to sing his praises.

The King finds Dionysus (who has disguised himself as a mortal) and, thinking he has found the leader of the cult, tosses him in jail. Dionysus promptly destroys the jail and most of the palace with lightning and a massive earthquake.

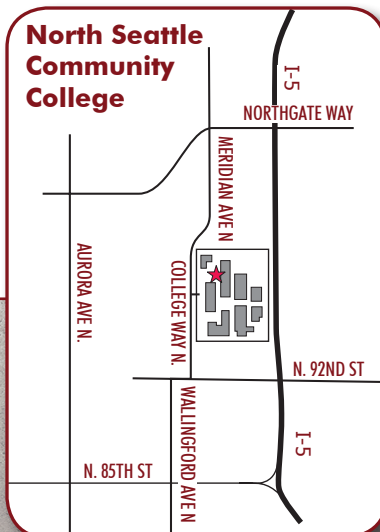
Hearing reports that the Maenads are getting a bit out of control, the King orders them destroyed. But Dionysus convinces him that he should go spy on the women in person before taking drastic action, and that he should go undercover, dressed as a woman. Which he does.

Will the King of Thebes survive this kinky encounter with the mad Maenads? Come find out in our tale of sex, drugs, and rock 'n' roll--oh, and gallons of blood--this fall!

Stage One Theatre  
North Seattle Community College  
9600 College Way N, Seattle, WA

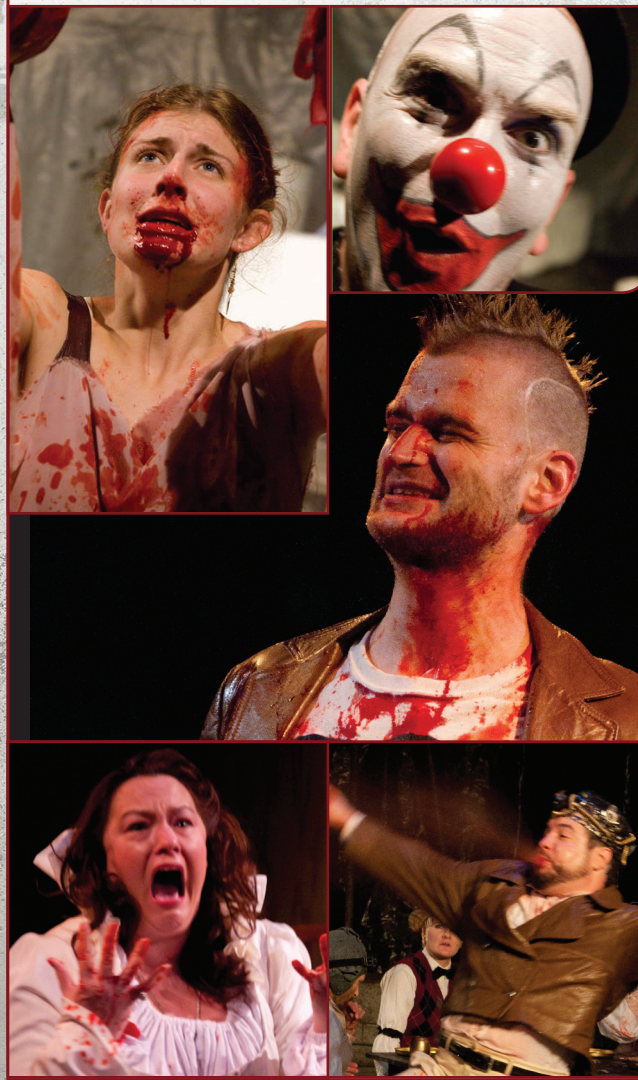
Building: LB 1236 (ground floor)  
[www.northseattle.edu](http://www.northseattle.edu)

North Seattle  
Community  
College



## What is HARD BARD?

It's GreenStage's annual Halloween show that takes place indoors. Always FREE to attend. But we might bleed on you. See information at: [www.greenstage.org/hardbard](http://www.greenstage.org/hardbard)







## 25 Years of Free Theatre!

Since 1989, GreenStage has produced 38 of Shakespeare's 39 plays, new works, American Classics, and our popular Hard Bard Halloween shows. Here's a photo from almost every play!



Love's Labour's Lost - 1996



As You Like It - 1997



Julius Caesar - 1997



Cymbeline - 1997



Comedy of Errors - 1999



Timon of Athens - 1999



Volpone - 1999



Ballad of Young Will Jones - 2000



Macbeth - 2001



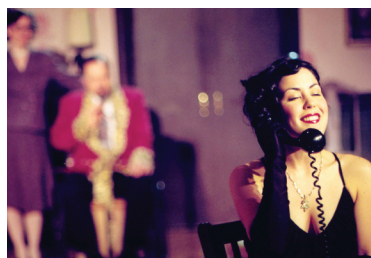
Troilus and Cressida - 2001



A Touch of the Poet - 2002



Henry IV, part 2 - 2002



Man Who Came to Dinner - 2004



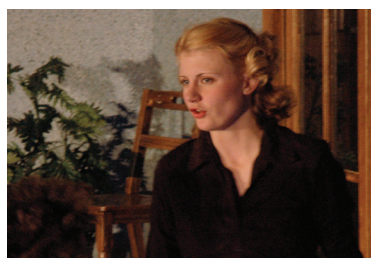
All's Well That Ends Well - 2004



Coriolanus - 2004



Who's Afraid of Virginia Woolf - 2005



The Skin of Our Teeth - 2007



Two Gentlemen of Verona - 2007



Twelfth Night - 2008



Hamlet - 2008



Romeo and Juliet - 2010



HARD BARD Macbeth - 2010



The Tempest - 2011



Antony and Cleopatra - 2011





Twelfth Night - 1991-92



Midsummer Night's Dream - 1993-94



Pericles - 1995



Measure for Measure - 1996



The Two Noble Kinsmen - 1998



A Midsummer Night's Dream - 1998



Richard II - 1998



The Bind & Root of Chaos - 1999



Much Ado About Nothing - 2000



Henry IV, part 1 - 2000



The Winter's Tale - 2000



Squish! - 2001



The Taming of the Shrew - 2002



Night of the Iguana - 2003



Merchant of Venice - 2003



Merry Wives of Windsor - 2003



Henry V - 2005



The Tempest - 2005



A Midsummer Night's Dream - 2006



Henry VI, Parts 1, 2, 3 - 2006



Comedy of Errors - 2009



King John - 2009



HARD BARD Titus Andronicus - 2009



As You Like It - 2010



HARD BARD Revengers Tragedy - 2011



Taming of the Shrew - 2012



Henry VIII - 2012



HARD BARD Cardenio - 2012



## Contributors - Donations between 5/1/2012 and 6/23/2013

GreenStage makes every effort to publish donation information accurately. If information is incorrect or missing, please let us know at [greenstage@greenstage.org](mailto:greenstage@greenstage.org) or by calling 206-748-1551.

### \$3000 and above

4 Culture  
KUOW 94.9 FM\*  
Seattle Parks and Recreation\*

### \$1000 - \$2999

Seattle Office of Arts and Cultural Affairs  
Washington State Arts Commission

### \$500 - \$999

Peter Burford and Alice Sieger  
Jeanne DeBaets and Kip Kolodziejki  
Jack Holtman  
Ron Meckler  
Jeff Taylor  
Nicole Vernon  
Jewel Vuong

### \$250 - \$499

Anonymous (1)  
Seattle Foundation  
Microsoft Matching Gifts Program  
Dennis Glavin  
Megan Pursell

### \$100 - \$249

Bill and Melinda Gates Foundation Matching Gifts Program  
Microsoft Matching Gifts Program  
In memory of Margaret Ann Powell  
Massy and Sally Anaya  
Meredith Armstrong and Erik Swanson  
Joseph and Alex Barredo  
Rod Cameron and Heather Howard  
Todd Currie  
Alicia Doyl  
Kathy Dugaw  
Holly Eckert  
John Fugate and Tony Earl  
Marcia Holiday  
Ken and Lisa Holmes  
Brian Kesler  
Maria Meredith  
Anne Miano  
Stephen Montsaroff  
Grace Reamer and Kevin Boze  
Kirk Robbins  
Cynthia and Greg Scheiderer

Dave and Anne Schmitt  
Art Simpson and Lizz Maunz  
Thomas Sunderland and Emily Riesser  
Teresa Thuman  
Cynthia Upthegrove  
Nona Vernon  
Rich Voget  
Robin and Mark Whipple  
Jerry and Karen White  
James Wood  
Clem and Monica Zipp

### \$50 - \$99

Anonymous (5)  
Harold and Lynne Armstrong  
John Bradshaw  
Stephen Connelly  
Emmett Driscoll  
Linda Dougherty  
Krista Erickson  
Kim and Eric Friedli  
Kris Fulsaa  
Alan Gibbs  
Samara Hoag  
Cecile Kummerer  
Teri Lazzara  
Corey McDaniel

Sue Moser and Scott Seramur  
Andrew Pachuta  
Lynn Meredith Perkins  
Will Peterman and Susan Ferrell Peterman  
Loretta Pirozzi  
Dan Portman  
Eric and Karen Richter  
Don Sammann and Laurie Winograd  
Gianni Truzzi  
Tom and Sheila Verhulp  
Christopher Warrington  
Richard Wurdack

### \$10 - \$49

Anonymous (2)  
Judith Adams  
Andrew Aiken  
Vickie L Barr  
Deniece Bleha  
Pat Brda  
Elisabeth Bursell  
Denise Chan  
Irene Choi  
Adrienne Dahlin  
Emmett Driscoll  
Erin Egan  
Scott Gifford

Sue Hartman  
Susan Howlett and David Bauman  
David and Lisa Kassens  
Ronald Krotoszynski  
Maverick, Jax, and Chase Larkin  
Amy Law  
Sarah Lesley  
Stephen Loch  
Alison McRae  
Katie Mesaros  
Seth Mitton  
Thomas Morris  
Ronda and Terry O'Brien  
Meg Pageler Mourning and David Mourning  
Charles Putman  
Michael Ramquist  
Walter and Lilda Roubik  
Erika Rusch  
Eric and Tera Schreiber  
Bobbie Simone  
Harry and Carolyn Stern  
Jay and Dana Sundahl  
Daniel Tarker  
Kathryn Thompson  
Eric Tilleson  
Cory Watkins

## Support GreenStage

Your contribution makes it possible for thousands of people to enjoy free theatre, and guarantees that these programs will continue into the future. Become a GreenStage donor today by filling out the form below and either mailing it in, or just handing it to our house manager at the show with your donation. You can also donate online at [www.greenstage.org/donate](http://www.greenstage.org/donate)

**We also accept credit cards here in the park! See our house manager for details.**



**YES! I want to support free theatre!**

**CREDIT CARD DONATIONS ACCEPTED** - See the House Manager for details.

Donate online at [www.greenstage.org](http://www.greenstage.org)

Name \_\_\_\_\_

Address \_\_\_\_\_

City \_\_\_\_\_ State \_\_\_\_\_ Zip \_\_\_\_\_

Phone \_\_\_\_\_ Email \_\_\_\_\_

**How do you want to be listed in our program?**

☐ Use the name above ☐ Use this name \_\_\_\_\_

☐ I prefer to remain anonymous

**Donation amount:**

☐ \$500 ☐ \$300 ☐ \$150 ☐ \$50 ☐ \$25 ☐ Other \$ \_\_\_\_\_

**THANK YOU FOR YOUR SUPPORT!**

Make checks payable to  
GreenStage

Mail completed form to:  
GreenStage • PO Box 9594  
Seattle, WA 98109

**DOUBLE YOUR  
DONATION!**

**Ask your employer  
about corporate  
matching!**



# SHAKESPEARE in the PARK



The Seattle Foundation

give  
**BIG**

We want to give a special thank you to the following supporters who donated through Seattle Foundation's annual GiveBIG campaign this spring, helping us raise \$4,265 in contributions, plus matching funds from Seattle Foundation.

Look for GiveBIG again next spring!

Judith Adams	Mourning and
Kim Ahlf	David Mourning
Harold and Lynne	Julia Paulsen
Armstrong	Loretta Pirozzi
Meredith Armstrong	Megan Pursell
Erik Swanson	Charles Putman
Kristina Backstrom	Bonnie Rames
Joseph and Alex	Michael Ramquist
Barredo	Grace Reamer and
Christine Bateman	Kevin Boze
Elisabeth Bursell	Jane Reamer
Stacey Bush	Samantha Redsell
Denise Chan	Eric and Karen
Todd Currie	Richter
Adrienne Dahlin	Kirk Robbins
Jeanne DeBaets and	Erika Rusch
Kip Kolodziejski	Cynthia and Greg
Linda Dougherty	Scheiderer
Alicia Doyle	Harry and Carolyn
Emmett Driscoll	Stern
Krista Erickson	Wagner Machado
Ashley Flannegan	Jay and Dana
Russell	Sundahl
Kris Fulsaa	Tom Sunderland and
Alan Gibbs	Emily Riesser
Dennis Glavin	Daniel Tarker
Ken and Lisa Holmes	Kathryn Thompson
Jack Holtman	Teresa Thuman
Amy Law	Gianni Truzzi
Sharon Lynch	Nicole Vernon
Corey McDaniel	Nona Vernon
Maria Meredith	Rich Voget
Thomas Morris	Jewel Vuong
Meg Pageler	

## 2013 SUMMER PERFORMANCE CALENDAR

SUN	M	TU	W	THU	FRI	SAT
<b>JULY 12 – AUGUST 18</b> <b>FREE THEATER!</b> donations joyfully accepted Dates, times, and locations subject to change.					12 <b>King Lear</b> – 7pm Volunteer Park <b>Midsummer</b> – 7pm Fall City Park <b>Twelfth Night*</b> – 7pm High Point Commons	13 <b>King Lear</b> – 7pm Seward Park <b>Midsummer</b> – 7pm Volunteer Park <b>SOTF</b> <b>Twelfth Night*</b> – 7pm Cowen Park
<b>JULY 2013</b>						
14 <b>King Lear</b> – 2pm Volunteer Park <b>SOTF</b> <b>Midsummer</b> – 7pm Seward Park <b>Twelfth Night*</b> – 3pm Greenwood Park	15	16	17	18 <b>Midsummer</b> – 7pm Lower Woodland Park <b>Twelfth Night*</b> – 7pm Hing Hay Park	19 <b>King Lear</b> – 7pm Lower Woodland Park <b>Merry Wives*</b> – 7pm Greenwood Park <b>PUB CRAWL!</b>	20 <b>Double Feature Day</b> <b>King Lear</b> – 3pm <b>Midsummer</b> – 7pm Lower Woodland Park <b>Merry Wives*</b> – 7pm High Point Commons
21 <b>Double Feature Day</b> <b>Midsummer</b> – 3pm <b>King Lear</b> – 7pm Lower Woodland Park <b>Twelfth Night*</b> – 3pm Occidental Park	22	23	24	25	26 <b>King Lear</b> – 7pm Camp Long <b>Midsummer</b> – 7pm Willis Tucker Park, Snohomish <b>Twelfth Night*</b> – 7pm David Rogers Park	27 <b>King Lear</b> – 7pm Dottie Harper Park, Burien <b>Midsummer</b> – 7pm Camp Long <b>Twelfth Night*</b> – 7pm Wallingford Playfield
28 <b>King Lear</b> – 3pm Lincoln Park <b>Midsummer</b> – 3pm Discovery Park <b>CHAT</b> <b>Merry Wives*</b> – 3pm Cowen Park	29	30	31	1 <b>King Lear</b> – 7pm Lynndale Park, Lynnwood <b>Midsummer</b> – 7pm Lincoln Park	2 <b>King Lear</b> – 7pm Fall City Park <b>Midsummer</b> – 7pm Lincoln Park <b>Twelfth Night*</b> – 7pm Salmon Bay Park	3 <b>King Lear</b> – 7pm Lincoln Park <b>Midsummer</b> – 7pm Dottie Harper Park, Burien <b>Merry Wives*</b> – 7pm Wallingford Playfield
<b>AUGUST 2013</b>						
4 <b>King Lear</b> – 3pm Discovery Park <b>CHAT</b> <b>Midsummer</b> – 3pm Battle Point Park, Bainbridge Island <b>Merry Wives*</b> – 3pm Occidental Park	5	6	7	8 <b>King Lear</b> – 7pm Magnuson Park <b>Midsummer</b> – 7pm Lynndale Park, Lynnwood <b>Merry Wives*</b> – 7pm Salmon Bay Park	9 <b>King Lear</b> – 7pm Willis Tucker Park, Snohomish <b>Midsummer</b> – 7pm Magnuson Park <b>Twelfth Night*</b> – 7pm Lavizzo Park	10 <b>Double Feature Day</b> <b>King Lear</b> – 3pm <b>HAPPY HOUR*</b> – 5pm <b>Midsummer</b> – 7pm Magnuson Park
11 <b>Double Feature Day</b> <b>Midsummer</b> – 3pm <b>King Lear</b> – 7pm Magnuson Park <b>Merry Wives*</b> – 3pm David Rogers Park	12	13	14	15 <b>Midsummer</b> – 7pm Volunteer Park <b>Merry Wives*</b> – 7pm Hing Hay Park	16 <b>King Lear</b> – 7pm Volunteer Park <b>Midsummer</b> – 7pm Anderson Park, Redmond <b>RAO</b> <b>Merry Wives*</b> – 7pm Lavizzo Park	17 <b>Double Feature Day</b> <b>King Lear</b> – 3pm <b>Midsummer</b> – 7pm Volunteer Park <b>Merry Wives*</b> – 7pm Anderson Park, Redmond <b>RAO</b>
18 <b>Twelfth Night*</b> – 7pm Anderson Park, Redmond <b>RAO</b>	* <b>Twelfth Night</b> and <b>The Merry Wives of Windsor</b> are part of Backyard Bard. – See inside for details! <b>SOTF</b> – Seattle Outdoor Theatre Festival – See inside for details! <b>CHAT</b> – Chat with the cast after the performances at Discovery Park. <b>RAO</b> – Redmond Acts Out. Redmond's outdoor theater festival. <a href="http://www.actsout.com">www.actsout.com</a> for details. <b>PUB CRAWL</b> and <b>HAPPY HOUR</b> – Special fund-raising events this summer.					

## GreenStage

Seattle's Shakespeare in the Park Company

[www.greenstage.org](http://www.greenstage.org) | 206-748-1551 | PO Box 9594, Seattle, WA 98109

### Board of Directors

Peter Burford, Alicia Doyle, Scott Gifford, Ken Holmes, Scott Smallbeck, Nicole Vernon



facebook/greenstageseattle



@green\_stage

Program Design by Devlin Donnelly | [www.devlindonnelly.com](http://www.devlindonnelly.com)



TECHNOLOGY STAFFING EXPERTS

INNOVATION  
THROUGH  
ENGINEERING



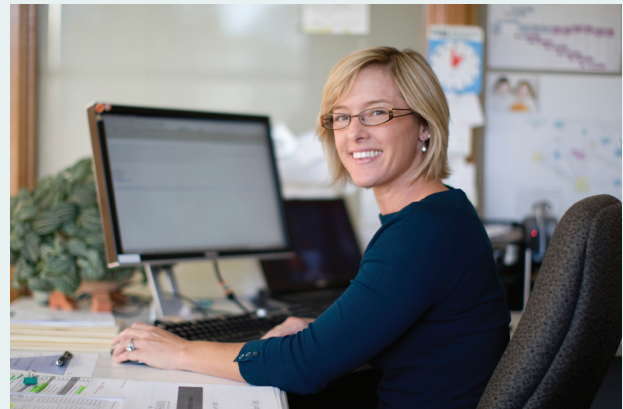
## GIVING BACK TO OUR COMMUNITIES

*Giving back to the communities where we live, work, and play is a deeply-held value at Protingent. We are proud that our contributions, leadership and volunteer efforts help strengthen our communities—providing a better environment for our employees and clients to live and work.*

*Protingent employees are extremely generous with their support of nonprofit organizations—through monetary contributions and gifts of their time and leadership. We support a number of organizations, especially those focusing on arts and culture, education, and technology.*

## ENGINEERING SUPPORT FOR ALL PHASES OF THE PRODUCT DEVELOPMENT PROCESS

In today's fast-paced global economy, flexibility and agility are crucial to success. At the same time, the quality of your engineering team cannot be compromised.



Protingent solves this dilemma by giving you the best of both worlds—skilled, experienced engineering professionals with the flexibility of contingent employment. We're also your one-stop-shop for direct placement needs.

Discover the Protingent difference. Call us today to get started.

**TOLL FREE: 855 418 5865**

[www.protingent.com/greenstage](http://www.protingent.com/greenstage)

16650 NE 79TH STREET SUITE 200  
REDMOND, WA 98052