

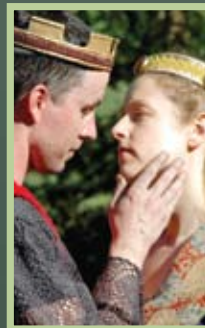
GreenStage 2010 - 22nd Season

SHAKESPEARE in the PARK



ROMEO AND JULIET

directed by Corey McDaniel



AS YOU LIKE IT

directed by Teresa Thuman

July 9 thru August 14, 2010

Seattle • Lynnwood • Burien • Fall City • Redmond



is sponsored by



CULTURE
KING COUNTY LODGING TAX



MEDIA SPONSOR



CITY OF REDMOND PARKS & RECREATION DEPARTMENT AND REDMOND ARTS COMMISSION PROUDLY PRESENT

arts IN THE PARKS

PERFORMANCES FOR CHILDREN

FREE • Tuesdays at noon
Redmond City Hall Green Space

July 13

Brothers from Different Mothers

A lively performance by the comedy duo that will have you laughing the whole time!

July 20

Johnny Appleseed

Book-It Repertory's presentation of a hero who brings apples and hope to the early settlers of America.

July 27

Adefua African Music & Dance

African drum beats, music and dance to get you up and dancing.

August 3

Schoolhouse Rock Live! Junior

SecondStory Repertory presents one of the most fun musicals ever to hit the stage!

August 10

The Forgetful Fairy

Redwood Theatre presents Fatima the tooth fairy who forgets many things, especially her job to deliver money to children.

August 17

One World Taiko

Japanese drum ensemble with heart pounding percussion.

PERFORMANCES FOR ALL AGES

FREE • Fridays at 7pm
Redmond City Hall Green Space

July 16

Musicians & Poets Open Mic

Local musicians and poets showcase their talents for the whole community. Details for performers are at www.redmond.gov/arts. Come support the talented artists in our community.

July 23

Good Company

These musicians will knock your socks off with a groovy rhythm that will keep you dancing.

July 30

Much Ado About Nothing

Wooden O Theatre presents Shakespeare's renowned comedy that illustrates the complexity of human relationships.

August 6

As You Like It

Performed by Greenstage, Heroine Rosalind flees persecution, accompanied by her cousin and the court jester to find safety and eventually love in the Forest of Arden.

August 13

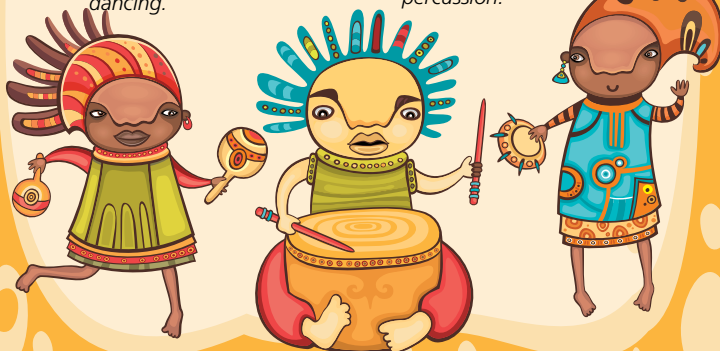
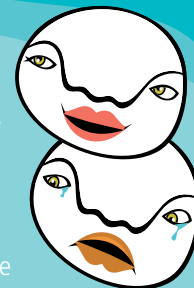
Romeo and Juliet

Shakespeare's timeless tragic romance performed by Greenstage.

August 20

Teen Performances

Teens from the Old Firehouse Teen Center take the stage in their 3rd year at Arts in the Parks.



Redmond City Hall Green Space is located at 15670 NE 85th Street



www.redmond.gov/arts
www.experienceredmond.com
425-556-2316

Friends of GreenStage....

Please present this
ad to your server for
HALF OFF
your second meal of
equal or lesser value



**5231 Ballard Ave
NW Seattle, WA 98107**
Open: M - F at 3
Sat & Sun at 9 for Brunch

SHOWTUNES
IN ASSOCIATION WITH STG AND BAA
BROADWAY MUSICALS IN CONCERT
Artistic Director - Martin Charnin
Executive Producer - Maggie Stenson Peterson

**SATURDAY
SEPT 25
8PM**
**SUNDAY
SEPT 26
2PM**

**CALL ME
MADAM**

BOOK BY
HOWARD LINDSAY
& RUSSEL CROUSE
MUSIC & LYRICS BY
IRVING BERLIN

DIRECTED
BY
MARTIN CHARNIN

THE
MOORE
THEATRE
1932 2ND AVE
SEATTLE, WA
98101

Tickets: \$25
1-877-STG-4TIX

Welcome to GreenStage's Shakespeare in the Park!



You are here, our cast is complete. Welcome.

Thank you for being part of our 22nd season. Since 1989 GreenStage has been bringing free theater to Puget Sound audiences, where they live – at a park near you. 22 years celebrating our frailty and power, passion in its many forms, love and hate, loss, isolation, and community, etc. Embracing, and sometimes merely facing our humanity.

In our 22 years, we have gone from performing to a few hundred people in two or three locations to reaching over 9,000 people in a dozen parks throughout Puget Sound. We expanded our programming to include two parks shows and have moved indoors as well; performing in the Seattle Fringe Theatre Festival, mounting our successful American Classics Series, and last fall's *Titus Andronicus* ushered in our Hard Bard series embracing our darker humanity, just in time for Halloween. Look for Hard Bard *Macbeth* this fall. We are growing our education program, offering summer camps at a number of parks, and developing ongoing classes for children and adults, professionals and not; and are always looking for new ways to reach out and build community.

In our 22 years, our performances have always been free – this is an integral part of who we are as a company. Theater should not be reserved for only those who can afford it; and can't survive with that model alone. Everyone needs access to Art because it essential to our being, as individuals, a community, and a society.

The Bread and Puppet Theater in Vermont writes in their *Why Cheap Art Manifesto*, "Art is Food! You can't eat it but it feeds you!" I believe this to be true and think no one should be denied nourishment. So thanks for dining with us.

Enjoy the show! Enjoy the park! Enjoy each other!

Erin Day
Artistic Director

Ryan Higgins in *The Two Gentlemen of Verona* at Lynndale Amphitheater in Lynnwood

AS YOU LIKE IT



*Who doth ambition shun
And love to live in the sun
Seeking the food he eats
And pleased with what he gets,
Come hither, come hither, come
hither*

*There shall he see
No enemy*

But winter and rough weather.

—As You Like it

Come hither and join us

in the Forest of Arden: a sacred place where free from the bonds of civilized society we can discover our true selves; a place where we can open our hearts and souls to know true love; a place where we can reawaken our consciences and reinvent a world broken by pride, greed and senseless ambition. Yet, the cost of this renewal is humility and in Arden everyone must abandon their social pretensions and learn to “play the fool.”

In *As You Like It*, Shakespeare gives us two worlds: the tyrannical court of the usurping Duke Fredrick and the idyllic, bohemian world of Arden where his banished brother, Duke Senior, reigns over a benevolent band of loyal lords. Shakespeare also gives us another pair of competing brothers: Oliver de Boys, the envious first-born who has withheld the rightful inheritance from Orlando, the youngest son. At the center of this romantic comedy is Rosalind, the reserved and highly intelligent daughter of the banished Duke. When forced to escape to the forest, she dresses in “man’s apparel” and is thus freed and emboldened to test and challenge all whom she encounters.

And where could there be a more ideal setting to present the pastoral tale than surrounded by the natural beauty of summer in the Pacific Northwest? Where ever you are joining us today, in whichever of these beautiful parks, we invite you to open your own hearts and be humbled by the majesty of Mt. Rainier and find hope and renewal in the smallest budding trees. So welcome to our Forest of Arden where we hope you will create your own world *As You Like it*!

Teresa Thuman – director

ROMEO AND JULIET



What a blessing it has been for me to take part in this very special production of one of the most famous plays in the English language. This story has been passed down from generation to generation and it would prove near impossible to find someone who does not have a sense of this powerful classic. It would be dishonest of me to say that I have not been intimidated by staging a play where it seems the entire world already knows the story. And therein lies our challenge: to bring the story to you today in a manner which brings it to you as if for the first time.

The tragedy that is *Romeo and Juliet* is thrust upon all those involved because of our primitive and iniquitous emotion that, when left unchecked, defies all that a person may hold as true, honest, moral and correct. This emotion is HATE. The hate that spawns between the Capulets and Montagues is so deeply ingrained and long standing that it appears that no one knows why any longer. They only know that it is. I need not remind anyone how this powerful and polar emotion remains a part of our world. Hate holds the power to defy and destroy everything in its path.

Romeo and Juliet, for me, is what we call a “passion play.” A play that we so desperately want to create that it is all we can think about. I spent most of my cold, wet, Seattle winter with the script. I read everything I could about the story. I wanted to take myself deep into the lives of our lovers and the people that made up their world. I became intimately connected to each one of them. And then by the creative abundance of our city we found the talent which seemed to fit my heart’s memory of each character that I had so closely been with for the past several months. I wanted whole-heartedly to embrace the values of GreenStage: that our productions should be about the text, the actors and the audience.

Thank you for being a part of our story today. What we do does not live without you, our audience. And I am so grateful that today we share in this experience.

Corey McDaniel – director

SHAKESPEARE in the PARK

JULY 9 – AUGUST 16

AS YOU LIKE IT

directed by TERESA THUMAN

CAST

(in alphabetical order)

Patrick Bentley Duke Frederick & Senior
 Tom Dewey Oliver
 Nicole Fierstein Phoebe/forester
 Alex Garnett Orlando
 Kate Kraay Rosalind
 Patrick Lennon Touchstone
 Marc "Mok" Moser Amiens/Charles
 Shane Regan Silvius/Dennis
 Nick Rempel Jaques
 Gina Marie Russell Audrey
 Donald Speirs Corin/Adam
 Gianni Truzzi LeBeau/Oliver Martext/ Jacques de Boys
 Nicole Vernon Celia

 Jessica Cooper Stage Manager

ROMEO AND JULIET

directed by COREY MCDANIEL

CAST

(in alphabetical order)

Lorrie Fargo Sampson/Peter
 Mari Geasair Nurse
 Matthew Gilbert Paris/Gregory
 Daniel A. Guttenberg Lord Capulet
 Jon-Erik Hegstad Tybalt/Apothecary
 Ryan Higgins Romeo
 Annie Rose Hughes Mercutio/Friar John
 Josh Krupke Prince
 Carolyn Marie Monroe Juliet
 Sara Mountjoy-Pepka Lady Capulet
 Eli Sklov Simons Friar Lawrence/Abraham
 Caleb Slavens Benvolio

 James Turpin Stage Manager

Production Team

Meagan McDonald Costumer (Romeo and Juliet)
 Janessa Jayne Styck Costumer (As You Like It)
 Ryan John Spickard Fight Director
 Ann Marie Caldwell Music Director
 Laura Garcia Property Designer
 Lee Ann Hittenberger Choreographer
 Seth Cooper House Manager (As You Like It)
 Vanessa Langston House Manager (Romeo and Juliet)
 Jocelyne Fowler Wardrobe Manager
 Ken Holmes Production Manager / Managing Director

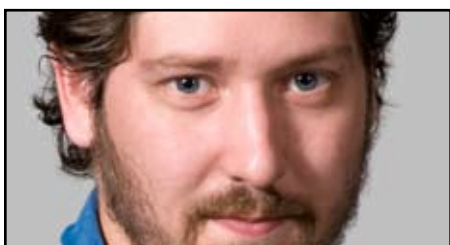
SPECIAL THANKS

Mike Andrew • Michelle Atkins • Callie Berry • Melinda Bunnage • Michael Burford • Devlin Donnelly • Driftwood Theatre
 Tony Driscoll • Lisa Holmes • Dan Iverson • Fremont Arts Council • Isabel Hamilton • Jeff Hodges • Ken Michels •
 Perfect Impressions Promotions • Jules Posadas • Julianna Ross • Savage Color • S.P.A.C.E.
 Seattle Parks and Recreation • Seattle Shakespeare Company

ABOUT THE ACTING COMPANY

**Patrick Bentley**(Duke Frederick & Senior - *As You Like It*)

Patrick is thrilled to be performing with GreenStage again. Previously at GreenStage, Patrick has played Adriana in *The Comedy of Errors* and the title role in *Titus Andronicus*. Patrick has also appeared locally with Balagan Theatre, Eclectic Theatre Company, and Auburn Regional Theatre. Elsewhere, Patrick has performed with Washington [DC] Shakespeare Company, The American Shakespeare Center, and many others. Patrick holds an M.Litt/MFA in Shakespeare from The American Shakespeare Center/Mary Baldwin College. He thanks you very much for coming to see the bard's work here today!

**Tom Dewey**(Oliver - *As You Like It*)

Tom is pleased to return to GreenStage for the second time after playing "every minor character who dies" in the Hard Bard *Titus Andronicus* last October. Other Seattle credits include Septimus Hodge in *Arcadia* with the driftwood players, King Pentheus in *Revenge and Sorrow in the Thebes*, Flying Elf's adaptation of *Baccae*, and most recently with Open Circle Theater as Jasper in *Alien in Poona*. He is honored to work with this wonderful company and hopes to return in summers to come.

**Lorrie Fargo**(Sampson/Peter - *Romeo and Juliet*)

Lorrie is thrilled to be spending this summer in the park with GreenStage! Her most recent project was *Perspectives* for Stone Soup's One Act Playwright's Festival. Other favorite roles include Elinor in *Sense and Sensibility* with the Attic Theatre, Mercedes in the *Farndale...* *Christmas Carol* at Taproot Theatre, and Sorel in *Hay Fever* at the Bristol Theatre Royal. Lorrie holds a BA in theatre from Seattle Pacific University and trained at the Bristol Old Vic Theatre School in the UK.

**Nicole Fierstein**(Phoebe/forester - *As You Like It*)

Nicole is delighted to be hitting the road with GreenStage again after appearing as Olivia in *Twelfth Night* in 2008. Her recent credits include Hermia in *A Midsummer Night's Dream* (Seattle Shakespeare Company tour), Jane Fairfax in *Emma* (Book-It Repertory Theatre), Cordelia in *King Lear* (Rough Play Productions), Rosalind in *As You Like It* (Work It Productions), *I Love You, You're Perfect, Now Change* (Capital Playhouse), *The Last Five Years* (Highwire Arts) and *Quickies: Volume 9* (Live Girls Theater). In 2004 she was honored to perform in the first fully staged musical in the British Virgin Islands, (*Honk!*) and for four seasons entertained children in Western Washington with Storybook Theater out of Kirkland. She received her BA from CSU Sacramento and currently teaches theater to 6 and 7 year olds at Studio East.

**Alex Garnett**(Orlando - *As You Like It*)

Alex is delighted to be working with GreenStage for the first time. Recent credits include *A Midsummer Night's Dream* with Seattle Shakespeare Company, *Measure for Measure* and *The History Boys* with ArtsWest, and last Winter's 14/48 Festival. His work has also been seen at Annex Theatre, ReAct, SiS Productions, SecondStory Repertory, Stone Soup Theatre, Ghost Light Theatricals, Sound Theatre Company, and more. This fall, Alex will be appearing in *Breaking the Code* with Strawberry Theatre Workshop (September 9 - October 9). Love to oh, I dunno – how about everyone?

**Mari Geasair**(Nurse - *Romeo and Juliet*)

Mari is thrilled to be joining GreenStage for the first time this summer. Recent favorite roles include Mac in *Three Viewings* for Cheshire Cat here in Seattle, and Helen in *Fat Pig* at Vintage Theatre in Colorado. Thanks to Erin, Amy, Gin, for being muses and supports. And thanks to Corey McDaniel and the amazing team at GreenStage for artistic brilliance and personal integrity and vision. Mostly though, thank you to YOU the audience for joining us for this grand adventure.



**DONATE ONLINE AT:
GREENSTAGE.COM/DONATE**

ABOUT THE ACTING COMPANY

**Matthew Gilbert**(Paris/Gregory - *Romeo and Juliet*)

Is so excited to be back with GreenStage for his second summer! Last year, you may have seen him in *King John* as the Earl of Salisbury. Other roles included Versinin in *The Three Sisters*, Creon in *The Oedipul Duplex* (Ghostlight Theatricals) Raven in *Book-It-All Over's Trickster Tails*, and Ophelia in the *15 Minute Hamlet* (Stone Soup Theatre) Matthew would like to thank the wonderful cast and crew for an awesome job well done. He'd also like to thank his Dad and Mom and his two sisters Megan and Lauren. Without them, I wouldn't be the man I am today. Thanks, Enjoy the show!

**Daniel A. Guttenberg**(Lord Capulet - *Romeo and Juliet*)

Daniel is a proud graduate of the Los Angeles City College Theatre Academy, where he appeared as Friar Bonventura in John Ford's *'Tis Pity She's a Whore* and Millet in *Fuddy Meers*, amongst other roles. Favorite roles in the Sacramento area include Andrew Carnes in *Oklahoma!*, Autolycus in *The Winter's Tale*, and Buffo the Clown in the US premier of *Nights at the Circus*. Newly arrived in the Northwest, he was recently seen as Richard Wagner and a member of chorus in *Unexpected Productions' world premiere of Nietzsche! The Musical*, directed by Kate Jaeger.

**Jon-Erik Hegstad**(Tybalt/Apothecary - *Romeo and Juliet*)

With a B.S. in theatre and a minor in Shakespeare from Southern Oregon University, this is the perfect show to make a Seattle debut. He thanks his mom and dad and you the reader for making this possible. Without an audience actors are just people talking to themselves. It is big and blue and all around you, what is it?

**Ryan Higgins**(Romeo - *Romeo and Juliet*)

This is Ryan's fifth summer with GreenStage after taking a slight break from acting to direct last year's *Comedy of Errors*. Recently, Ryan's been seen in *Trout Stanley and Elephant's Graveyard* at Balagan Theatre, *The American Pilot* and *The Oak Tree* at Theatre Schmeater, and in the last two 14/48 festivals. Ryan's latest directing credits include *Othello* and *Oedipus*, both at Balagan. Ryan is Associate Artistic Director of Balagan Theatre, a scorio, a lover of scotch, Tom Waits, hot sauce, and blue cheese, a native New Yorker, and very happy that you joined us today. Cheers!

**Annie Rose Hughes**(Mercutio/Friar John - *Romeo and Juliet*)

While Annie is a transplant from the Central Coast of California, she is very much enjoying the Seattle summer. She is a graduate of The Pacific Conservatory of the Performing Arts, where she played Thomasina in *Arcadia*. You may have seen her romping around Seattle acting or playing with her band The Mongrel Jews. She believes Flaming Hot Cheetoes rule and she is too cool for Shule.

**Kate Kraay**(Rosalind - *As You Like It*)

Kate is tremendously excited to make her GreenStage debut in the role of a lifetime. She is delighted as well to work with Teresa again, who directed her as Joyce/Pope Joan in *Top Girls*. Kate has performed on stages all over Seattle including Seattle Repertory Theater, ArtsWest, SecondStory Repertory, Theater Schmeater, 14/48, and Memory War Theater Project among others. Many thanks to a terrific cast and crew.

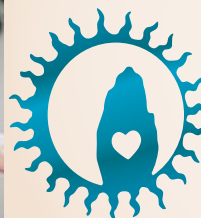
continued

**FOLLOW
GREENSTAGE
ON FACEBOOK!**



***My back o' t' other side,
—ah, my back, my back!***

— *Romeo and Juliet* - Act 2, Scene 5



Carolyn Marie Monroe
Licensed Massage Practitioner at

New Seattle Massage

www.newseattlemassage.com

(206) 632-5074

License #: MA00020775

ABOUT THE ACTING COMPANY



Josh Krupke

(Prince - *Romeo and Juliet*)

Josh returns to GreenStage for his second summer, last summer he played King Phillip in *King John*. He was most recently seen in *As You Like It* with Harlequin Productions. Josh has also worked extensively with Village Theatre on productions of *Stunt Girl*, *Beauty and the Beast*, *Aida*, *Little Women*, and *Evita*. Other favorite roles include Pablo Picasso in *Picasso at the Lapin Agile* (Driftwood Players), John the Baptist in *Godspell* (Renton Civic Theatre), and Sir Evelyn Oakleigh in *Anything Goes* (Civic Light Opera). Josh sends his love and thanks to God, Rebekah, and his parents!



Patrick Lennon

(Touchstone - *As You Like It*)

Patrick is thrilled to be working with GreenStage again, having previously appeared outdoors in *All's Well That Ends Well*, indoors in *The Skin of Our Teeth*, and in last year's smash hit Hard Bard revival of *Titus Andronicus*. He was most recently seen as Mountjoy/the Boy in Seattle Shakespeare Company's production of *Henry V*. Patrick has also had the pleasure of working locally with Seattle Public Theater, Ghost Light Theatricals, Woman Seeking... a theatre company, ReAct and others, as well as internationally with InPlayers Drama Group of Amsterdam. Patrick is a proud graduate of the Henry M. Jackson School of International Studies at the University of Washington, Seattle. As always, for grandma.



Carolyn Marie Monroe

(Juliet - *Romeo and Juliet*)

Carolyn has been prancing around her bedroom pretending to be Juliet for more years than she cares to admit, and she simply could not be more delighted to be a part of this production. She is doubly delighted to return to GreenStage, where she previously played Ophelia in *Hamlet*. Most recently, Carolyn appeared in *Condo Millennium*: by Marya Sea Kaminski, and in *Edmond* at Balagan Theatre. Other favorite credits include: *The Tempest* (Seattle Shakespeare Company), *End Days* (Seattle Public Theatre), *Rabbit Hole* (Island Stage Left), *Antony and Cleopatra* (Harlequin Productions), *The American Pilot* (Theatre Schmeater), *Top Girls* (Sound Theatre) and *14/48*. In addition to her life as an actor, Carolyn is a licensed massage practitioner, a disgruntled cafe worker and is occasionally honored to teach Shakespeare to kids. She extends heartfelt gratitude to Corey for making her dream come true, and to the amazing folks at GreenStage who are devoted to producing these marvelous works every summer.



Marc "Mok" Moser

(Amiens/Charles - *As You Like It*)

Marc is a 25-year veteran of Western Washington community theater, and is commensurably tickled to debut with GreenStage this summer. His previous Shakespearean roles include Petruchio, Benedick, Duke Orsino, and Macbeth. Other previous roles include El Gallo in the *Fantasticks*, King Creon in *Medea Knows Best*, Robin Hood in *Bolly'Hood - Men in Churidaar*, and Socrates in *Plato's Symposium*. Mok can be seen in the upcoming web series *The Adventures of Chadwick Perivinkle* and as Pemco's Northwest Profile #51 - The Utility Kilter.



Sara Mountjoy-Pepka

(Lady Capulet - *Romeo and Juliet*)

Sara is thrilled to be performing with GreenStage for the first time! She is an ensemble member of Unexpected Productions and performs regularly in TheatreSports, the longest running show in Seattle. She can be seen there this September as Dorothy in *Scarecrow for Hire*, a film noir adaptation of *The Wizard of Oz*. She is also an ensemble member of Magic Circle Mime Company and has performed with them across the U.S. and Canada, and in Spain and Taiwan. Thank you to her family for allowing her to run away from a prestigious music school and join the circus. This summer, she'll be teaching one of GreenStage's Summer Camps for Kids. Thank you to Doug and Maggie for immeasurable guidance, wild opportunities, and delicious pies. And thank you to all the incredible people she has met in her first year in Seattle, including everyone here at GreenStage.



Shane Regan

(Silvius/Dennis - *As You Like It*)

This is Shane's first show with GreenStage and he is elated to be playing outside all summer with this amazing cast. Shane also works as Membership/Program Associate for advocacy group Theatre Puget Sound and makes movies with The Beta Society.

**TELL YOUR FRIENDS
ABOUT GREENSTAGE!**

ABOUT THE ACTING COMPANY

**Nick Rempel**(Jaques - *As You Like It*)

Nick just finished an intense two-year dramatic run as a carpenter building his house. His previous credits include the Baltimore, Berkeley, Bakersfield, Nevada, Seattle, Wooden O, and Oregon Shakespeare Festivals. He has performed Off Broadway in *Notions In Motion*, toured England in *Twelfth Night*, and trekked through 22 states as Atticus in *To Kill A Mockingbird*. After a beer, he might admit to appearing in films like *SERIAL KILLER*, and *Back To the Fuhrer!*, as well as *Robin Hood- Men in Tights*, *Dracula Dead And Loving It*, and in a recurring role on *All My Children* (where he saved Erica's life . . .) He received an MA in The Contemporary Practice of Shakespearean Theater from the University of Essex, England, and has an MFA in Acting from USC. After GreenStage, his next production will be a comic production of *Let's Build a Tree House*, with his three young children.

**Gina Marie Russell**(Audrey/forester - *As You Like It*)

Gina is ridiculously excited to be making her GreenStage debut! She was last seen at the Northwest Film Forum in Marya Sea Kaminski's original piece, *Condo Millennium*. Favorite past shows include: *Sister Cities* (Carolina) with Emerald City Scene, Rough Play Production of *King Lear* (Regan); *Reefer Madness* with RK Productions; and *Into the Woods* (Witch) and *The Who's Tommy* (Acid Queen) at the University of Washington.

**DO YOU YELP? YELP
ABOUT GREENSTAGE!**

**Eli Sklov Simons**(Friar Lawrence/Abraham - *Romeo and Juliet*)

Eli is pickled as a clam to have been given this wonderful opportunity. Eli has been involved with GreenStage and its predecessor Shakespeare Northwest since 1992. During his many years with this awesome amorphous band of merry men and women he has had the pleasure to portray such characters as Feste (*Twelfth Night*), Peter Quince (*A Midsummer Night's Dream*), Pistol (*Henry V*), Hortensio (*The Taming of the Shrew*), and many others. Thanks to a wonderful cast and crew and to all you amazing people in the audience.

**Caleb Slavens**(Benvolio - *Romeo and Juliet*)

As a son of a mother who liked to keep a tidy house (and was keen not to find her valuables broken and shattered from here to high-water), Caleb is used to being banished to 'outside' to play and fight. So, you can only imagine his excitement when he was brought in to work with GreenStage and they informed him that it was part of their charter to uphold any-mother-with-sons strictest commandment. He is to here play (and fight) the part of Romeo's coolest cousin. As for Caleb himself, he is a student of Freehold Arts Studio (which is one of Seattle's best non-profit theatrical arts schools) and he has been performing in theater productions in and around Puget Sound for the last 4 years. In the words of his amazing mother, and he imagines yours, he hopes that this summer you "TAKE IT OUTSIDE!" to see *Romeo and Juliet* in the park. "AND SHUT THE DOOR, YOU'RE LETTING THE FLIES IN!"

WASHINGTON CHERRIES

Transformed!



10%
OFF COUPON

Redeem at Chukar®
in Pike Market.

Exp. 10/2010

GTSP10

CHOCOLATE CHERRY GIFTS!
Chukar Cherries in Pike Market

Main Arcade Bldg • Tasting daily 9 am-6 pm

www.chukar.com • (800) 624-9544

continued →

ABOUT THE ACTING COMPANY

**Donald Speirs**(Corin/Adam - *As You Like It*)

Don has been an actor, singer and director for the better part of four decades, and is thrilled to become a member of the GreenStage family this year. Favorite roles include Bottom in *A Midsummer Night's Dream*, Amos Hart in *Chicago*, Alfie Doolittle in *My Fair Lady*, Kris Kringle in *Miracle on 34th Street* and Major General Stanley in *The Pirates of Penzance*. Thanks to Kaitlin and Felicity, the best daughters any father could hope for.

**Gianni Truzzi**(LeBeau/Oliver Martext/ Jacques de Boys
As You Like It)

Gianni has only recently returned to acting, last seen in *The Best Christmas Pageant Ever*, at Seattle Public Theater where he has also served as dramaturg. He is also a freelance journalist, a former theater critic for the Seattle PI and other publications, and the proud father of Sofia. He sends his love to his ever-patient wife, Zeila, who has allowed him to romp with his friends in the sun.

**Nicole Vernon**(Celia - *As You Like It*)

Nicole has a crush on GreenStage (shh... don't tell.) She has finally washed the last of the blood off from GreenStage's Hard Bard production of *Titus Adronicus* (Lavinia). Previous, less "goopy" productions include *Twelfth Night* (Viola), *Richard III* (Lady Anne), *A Midsummer Night's Dream* (Hermia), and *The Skin of Our Teeth* (Sabina) with GreenStage, Ghostlight Theatricals' *The Misanthrope* (Eliante) and Theater Schmeater's *The White Devil* (Isabella). Many thanks to Erik and the excellent Chukar team for working hard so that she can play in the park every weekend.

SIMPLE SUMMARIES of the SUMMER SHOWS
AS YOU LIKE IT

Oliver de Boys is very mean to his younger brother, refusing to share any of the inheritance from their father and making Orlando live a rustic life. When Orlando enters a wrestling match at court, Oliver pays his opponent to injure or kill Orlando. But Orlando wins the match, and catches the eye of the beautiful Rosalind, and she catches his. The court is headed by Rosalind's uncle, the mean Duke Frederick, who has banished his own brother (and Rosalind's father) the good Duke Senior from his court. When Frederick finds out who Orlando is (the son of a supporter of Duke Senior), Frederick sees red. And all this thought about Duke Senior makes him realize he doesn't like Rosalind hanging around, so he banishes her as well. Rosalind's best friend, and Duke Frederick's daughter, Celia won't be separated from her BFF, so she joins Rosalind in her banishment – with both of them disguised: Rosalind as a boy named Ganymede, and Celia as Ganymede's sister Aliena. They also bring along Frederick's fool, Touchstone.

Off go the banished folks to the Forest of Arden, where Duke Senior extols the virtues of living in the woods, and hangs out with a band of merry men. When Orlando finds out that Oliver is plotting against his life, he also runs to Arden and meets up with Duke Senior's camp. When he tells his story of woe, and the banished Duke's melancholy companion Jaques tells us about how all the world is a stage. Orlando settles into his life in the forest, although he pines after Rosalind, and sticks love letters to her on all the trees. Meanwhile, Rosalind and Celia (still disguised) and Touchstone have settled into country living, and even have a little pasture land and some sheep.

But will Orlando ever find his Rosalind? Will Rosalind reveal her true identity? Will the banished Duke be reunited with his daughter? Will Touchstone have a love adventure of his own? You'll just have to watch the play to get those answers.

ROMEO AND JULIET

The Capulet and Montague families have been feuding so long, nobody even knows what the grudge is about anymore. But the young men of both families are happy to keep the fight going. When yet another fight breaks out in the streets, the Prince of Verona (where we lay our scene) decrees that the next person that starts a fight will face the death penalty.

Romeo, a Montague, missed all the action because he was mooning over a girl, Rosaline, who apparently wants nothing to do with him. Juliet, a Capulet, is of marrying age and her father has arranged for her to marry Count Paris, and is throwing a party to celebrate. Romeo and his friends Benvolio and Mercutio decide to crash the party of their enemy. Of course, we can guess from the title of the play what happens next – Romeo and Juliet meet and fall instantly in love. After the party, Romeo sneaks onto Juliet's balcony and they make some of the best word-love the world has ever heard.

Very early the next day, Romeo runs to Friar Lawrence's cell to tell him all about his newest love, and convinces the friar to marry them. Meanwhile, Juliet's cousin Tybalt, who saw Romeo at the party, is out looking for a fight. By the time Tybalt finds Romeo, the two lovers have been secretly married and Romeo refuses to fight his new kinsmen. No matter though, Mercutio is more than happy to oblige. Romeo tries to stop the fight, but Mercutio ends up on the wrong end of Tybalt's sword. Seeking revenge for his friend's death, Romeo goes after Tybalt and well, remember that decree the Prince made earlier? Let's just say that the force of the decree is now aimed directly at Romeo.

Will Romeo escape Verona and the law? Will Juliet ever see her Romeo again? Do they live happily ever after? Keep watching to find out... but remember that this is a tragedy.

Photo credits: above left - Alex Gamett and Kate Kacy in *As You Like It*. Above right - Ryan Higgins and Carolyn Marie Monroe in *Romeo and Juliet*. Photos by Ken Holmes

ABOUT THE PRODUCTION TEAM

Corey McDaniel

(Director - *Romeo and Juliet*)

This marks Corey's third production with GreenStage having played the title role in last summer's *King John* and *Demetrius in Titus Andronicus* last fall. His recent directing credits in the Seattle area include *Man of La Mancha* and *Once Upon a Mattress* at Bainbridge Performing Arts and *Arcadia* at Driftwood. As an actor and dancer, Corey's work has been seen on stages such as the Fabulous Fox Theatres, The Hollywood Bowl, The Metropolitan Opera House and Teatro Sistina in Rome. Locally he has worked with Book-It Repertory Theatre, Sound Theatre Company, The Attic Theatre and Stone Soup Theatre. Television credits include *Days of Lives* and *Beverly Hills 90210* (the original). In Los Angeles, Corey was a staff director for Children's Theatre Experience before becoming Artistic Director for the Sho Kosugi Performing Arts Academy in Nagoya, Osaka and Tokyo Japan. Corey enjoys spending his free time with the love of his life and their two dogs.

Teresa Thuman

(Director - *As You Like It*)

Teresa is delighted to return to GreenStage this season after directing last summer's production of *King John*. She has directed locally at Shoreline Community College, Theater Schmeater, Cornish College of the Arts, Civic Light Opera, Bainbridge Performing Arts, Driftwood Players and numerous new-work projects for the Mae West Fest, Fringe Festival, Theatre4Play Festival, TPS Beyond the Frame, Theatre Babylon and the Experimental Theatre Project. Teresa launched Sound Theatre Company in 2006 with the site-specific production of *The Tempest*, performed in the water and on the shore of Lake Sammamish, and *Troilus and Cressida* in a former navy hangar at Magnuson Park. Other Shakespeare credits include *Henry V* (University of Portland), *As You Like It* (Central Coast Shakespeare Festival), *Pericles* (Cornish), and serving as Assistant Director for *The Merchant of Venice* and *The Merry Wives of Windsor* at Oregon Shakespeare Festival.

Teresa has taught at UW School of Drama PATP, Cornish College, Freehold ETI and served eight years as an Artist-in-Residence at PCPA TheatreFest in California, where she taught in the Conservatory and acted in over thirty productions.

Meagan McDonald

(Costumer - *Romeo and Juliet*)

Meagan is thrilled to be working on her first production with GreenStage this summer. Previous costume design work includes *And Then There Were None* (June, 2010), *Arcadia* (February, 2010), *Leading Ladies* (June, 2009) and *Our Town* (February, 2009) all with The Driftwood Players in Edmonds. Meagan returned to the Pacific Northwest in May of 2008 after earning degrees in Business Administration and Communications from Loyola Marymount University in Los Angeles. While there, she worked extensively with The Del Rey Players, the university's student theatre company. Many thanks to the cast,

continued

Green Stage

Green World

Green Medicine



Scientific, sustainable, whole-system solutions to chronic disease

Stop chasing symptoms – find and treat the cause

Tom Ballard, RN, ND - *As you like it for 27 years*

Author of *Nutrition-1-2-3: Three proven diet wisdoms for losing weight, gaining energy, and reversing chronic disease*

Seattle: (206) 324-2225

Renton: (425) 255-8100 Ex6

www.PureWellnessCenters.com

Covered by most insurance

ABOUT THE PRODUCTION TEAM continued

crew and director of *Romeo & Juliet* for a fabulous experience and to her friends and family. Meagan would especially like to thank GreenStage for letting her take part in this incredible production.

Janessa Jayne Styck (Costumer - *As You Like It*)

Janessa is a graduate of Illinois Wesleyan University in Bloomington, Illinois where she studied under Tony-nominated Marcia McDonald. Since her relocation to Seattle in 2007, Janessa has been privileged to design for such theatre companies as Book-It Repertory Theatre, Seattle Musical Theatre, GreenStage, Wooden O, and Youth Theatre Northwest. This winter Janessa was honored to have her design for GreenStage's summer production of *Comedy of Errors* named Best Costumes of 2009 by the West Seattle Weisenheimer Arts Blog. She is very happy to announce the completion of her first venture into costuming for the big screen; *Wolfsbane*, a short steampunk film, is now in post-production. Janessa is proud to spending her third summer with GreenStage and is looking forward to designing for Youth Theatre Northwest and their upcoming production of *Thoroughly Modern Millie*.

Ryan John Spickard (Fight Director)

A Native to the Northwest, Ryan is a BFA graduate from Cornish College of the Arts and a member of the Society of American Fight Directors as well as the United Stuntmen's Association. Past shows for GreenStage that he has choreographed have been *Troilus and Cressida*, *Richard III*, *Hamlet*, *Macbeth*, and *Henry VI – parts 1, 2 & 3* among others, and is very excited to be back for GreenStage's fabulous 2010 season. Also as an actor, he has performed with local theaters such as GreenStage, Theater Schmeater, Seattle Shakespeare Company, and Book-It Repertory Theatre Book-It Repertory Theatre, as well as regionally with The Idaho Shakespeare Festival and the Colorado Shakespeare Festival. Ryan is the Co-Artistic Director of Performers' Forge, a organization dedicated to the education and performance of Stage Combat through action and violence. "When Violence is the Answer, We are the Solution!"

Laura Garcia (Property Designer)

This Laura's 16th show with the GreenStage, and she is so happy to be here for the summer of LOVE!!! Some of her favorite experiences over the years have included directing The

Taming of the Shrew, assistant directing shows for the Fringe Theater Festivals and stage managing many, many shows including *Macbeth* directed by Ken Holmes. She also loves making cool props! She has been seen around town with Theatre Schmeater and ACT. She began her career in New York City, Off-Broadway at The Manhattan Theatre Club. Laura studied directing and acting at Herbert Berghof Studios in New York City. She is so proud of her three beautiful grown daughters who have grown up backstage with GreenStage! BUAIDH NO BAS.

Lee Ann Hittenberger (Choreographer)

Some of Lee Ann's choreography credits include *Macbeth* (fights), *Peter Pan* (fights), *Annie*, *Anything Goes*, *Angry Housewives*, *Damn Yankees*, *Grease*, *Guys & Dolls*, *Once On This Island*, *Oklahoma*, *Oliver*, *Meet Me in St. Louis*, and *Music Man*. She has performed with Village Theater, Civic Light Opera / Seattle Musical Theatre, Minnesota Repertory Theatre, and Coeur d'Alene Theater. Not only is she certified in eight stage combat weapons, but as a teaching artist she has worked for Edmonds Community College and University of Minnesota, Kitsap Forest Theater, several regional schools and Bainbridge Performing Arts where she will be directing *Annie* this fall. Special thanks to Corey, Teresa, and Ken for making this event possible.

James Turpin (Stage Manager - *Romeo and Juliet*)

James is ecstatic to be spending his first summer with GreenStage. Previously, he has been the Assistant Stage Manager for *Paradise Lost* at the Intiman Theater, as well as the Stage Manager for another local outdoor theater troupe, the Young Shakespeare Workshop, for several years. He loves being outdoors in rain or shine (though shine would be nice) and thrives off of these summers spouting Shakespeare in the parks! And with great importance, he'd like to thank you. For without listeners, a group of people who like to shout the words of a man who's been dead for 400 years are just crazy, right?

Jessica Cooper (Stage Manager - *As You Like It*)

Jessica is thrilled to be making her Seattle debut as a Stage Manager with GreenStage. Jessica has a BFA in stage management and playwriting, alongside a BA in Spanish, from Ohio University, and is currently pursuing an MBA in non-profit leadership. A few of her

favorite college productions were *The Laramie Project*; *Marat/Sade*; *The Gods Are Not To Blame*, and the world premiers of *Happy Slap* and *The Vagina: An Owner's Manual*. Professional credits include *Inherit the Wind* and *Peter Pan* with the Ohio Valley Summer Theatre; *The Flattering Word*; *the Shaw Shorts*; and the world premier of *My Life in the Silents* with the American Conservatory Theater in San Francisco. Jessica would like to thank her husband and favorite person, Seth, as well as her dog, Desdemona, and cats, Rosalind and Celia (really) for putting up with all of her late nights at work, in class, and in term paper land.

Jocelyne Fowler (Wardrobe Manager)

Jocelyne is a graduate from the University of Washington. She has worked as a costume designer and wardrobe. She is currently working with Book-It Repertory Theatre.

GREENSTAGE STAFF

Erin Day (Artistic Director)

Though born in upstate New York, Erin did most of her growing up in Manassas, VA. A graduate of Westminster College in New Wilmington, PA, she continued her studies at Ohio University. In Washington D.C., she studied with Floyd King at The Shakespeare Theatre, worked at a variety of theatres, and developed and taught adult acting classes for Prince William County, VA. She performed with and helped write material for The Ohhhh Soooo Politically Correct Players, and was a proud member of the Paul Hill Chorale. In 1994 she moved west to Seattle, auditioned for GreenStage and was cast as Thaisa in *Pericles*. That experience; the intimate relationship of actor, text, audience and the elements brought her back to the company again. And again. She has performed with GreenStage in numerous productions, both indoors and out, as well as Seattle Public Theater, Theater Babylon, One World Theater, Seattle Fringe Festival, The Washingtonians!, and most recently joined the company of The Midnight Mystery Theater. Also with GreenStage, Erin has acted as Voice and Text Coach for several productions, served on the Board of Directors, served coffee, ushered, etc, etc ... it has been her honor to witness and be part of GreenStage's growth and she is humbled and excited to serve in this new capacity as we enter our 22nd season.

GREENSTAGE STAFF
continued

Corey McDaniel (Education Director)
See production team bios.

Amelia Meckler (Communications Director)
Amelia left New York in 1997 and is now what they call a lifer with GreenStage. She is rising to the challenge of her new staff position. Favorite GreenStage experiences include *Bloody Slave Girl* in *Titus Andronicus*, Elizabeth in *Richard III*, Katarina in *The Taming of the Shrew*, Ulysses in *Troilus & Cressida*; and non-Shakespearean turns as Honey in *Who's Afraid of Virginia Woolf?*, Maxine in *The Night of the Iguana*, and Mammoth and Fortune Teller in *The Skin of Our Teeth* as well as directing *Twelfth Night*, *The Merchant of Venice* and *Squish!* Non-GreenStage forays include *Marat/Sade* at Balagan Theatre, and *Creation of the World* and *Kvetch* at Theater Schmeater. This summer, you can see Amelia's directorial talents at work in Theater Schmeater's park show *An Inconvenient Squirrel*.

Meredith Armstrong
(Facilities Manager)

Meredith is an actor and dialect coach who works around the Puget Sound region, most recently as Lizzie in Phoenix Theatre's *Taking*

Steps and as dialect coach for Tacoma Little Theatre's Major Barbara. Come see her bellydance troupe, The Fuzzy Monkeys, this October 1st and 2nd at Renton Civic Theatre for a truly unique dance show. www.fuzzymonkeys.com "If you keep working hard, talent is going to surpass bad luck." - Milton Bradley

Ken Holmes (Production Manager / Managing Director)

In 17 years with GreenStage, Ken has acted in 22 productions and directed 6 (or 8 if you count all three parts of *Henry VI*), and has put in time as a set builder, designer, accountant, mover, envelope lick, stitcher, delegator, negotiator, and board member. He has also been seen on stages all over town in various roles. He's thrilled to have some extra help this year from his amazing new staff of super heroes, and is very excited to be working with GreenStage's new Artistic Director, and longtime GreenStager, Erin Day. When not working on grant applications and IRS forms for GreenStage, Ken works as a freelance graphic designer and photographer. Last August, Ken and his lovely wife Lisa, entered the wonderful world of parenthood with the birth of their beautiful baby girl, Ruby.

SOUND THEATRE COMPANY
PRESENTS

The Belle of Amherst



by William Luce
directed by Teresa Thuman
with Maria Glanz as Emily Dickinson
original music by Brad Hawkins

TWO LIMITED ENGAGEMENTS

August. 6 - 15
Seattle Center House Theatre

September 24 - October. 10
CenterStage Theatre - Federal Way

"Exquisite... Maria Glanz
bewitches her audience!"
- *The Seattle Times*

Don't miss Maria Glanz in her tour de force performance in this critically acclaimed production about the life and work of the great American poet, Emily Dickinson, which played to entirely sold out houses last season.

For details visit
www.soundtheatrecompany.org

Shunpike
THE BUSINESS OF ART

ARTS &
CULTURAL AFFAIRS

SOUND theatre
soundtheatrecompany.org

Produced in association with Samuel French, Inc.

ghost light theatricals
season VIII: ch-ch-changes
the ballard underground
2220 nw market st, seattle

the skriker
march 2011

the clouds
april 2011

a midsummer
night's dream
november 2010

metamorphosis
january 2011

more at
ghostlighttheatricals.org

battle of the bards V
february 2011

ghost light X theatricals

SUPPORT GREENSTAGE

My wife and I welcomed our first child into the world last August, and already I couldn't be more proud of my little girl Ruby. Every stage she goes through is a thrilling development. Every day she grows a little, every day she touches my heart and makes me smile. I couldn't love her more.

For many years my only "child" was GreenStage, one for which I also have undying love and one which I am extremely proud of. Every stage of GreenStage's growth is also thrilling to me. This year, we've taken the huge step of instituting a paid staff of five amazing people – until now, we've been all volunteer. Leading that staff is our longtime company member Erin Day, taking over as Artistic Director – and I can't think of anyone more committed to the mission and spirit of GreenStage.

I take great pride in what we have accomplished in the past 22 years, and I'm excited for what's to come. When I see hundreds of people flocking to a performance, my heart swells.

This summer is GreenStage's summer of love. Join me in spreading the love by making a donation. You can use the form below, or donate online at www.greenstage.org/donate.

Thank you very much for coming to see a play today!

Ken Holmes
Managing Director

Enjoying the show?

Looking for a way to support GreenStage?

I will donate 15% of my fees for any service when you mention GreenStage!

Give me a call at
(206) 579-6061 or email
scott@sgiffordlaw.com

Scott Gifford Law

Providing quality estate and business planning services.

Flat fees for many services and I come to you!



YES! I want to support free theater!

Donate online at www.greenstage.org

Name

Address

City State Zip

Phone Email

Donation Amount (payable to GreenStage): ☐ \$300 ☐ \$150 ☐ \$50 ☐ \$25 ☐ Other \$

How would you like to be listed in our programs?

☐ Use the name above ☐ I prefer to remain anonymous

☐ Use this name:

Return form to: GreenStage • PO Box 9594 • Seattle, WA 98109

DOUBLE YOUR GIFT! Ask your employer about corporate matching!

GreenStage is a 501(c)3 non-profit organization qualified to accept tax-deductible donations.

OTHER WAYS TO HELP:




TELL YOUR FRIENDS ABOUT GREENSTAGE

YELP ABOUT GREENSTAGE • DONATE AT GREENSTAGE.ORG

FOLLOW US ON FACEBOOK • VOLUNTEER

Let us help you piece together the Bard...

GreenStage's education department
is now offering classes for adults.


-  Introduction to Shakespeare
-  Audition classes for actors
-  and more!

Visit www.greenstage.org for more info

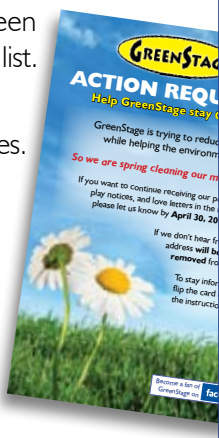
ARE YOU ASKING

"Why didn't I get my GreenStage
schedule in the mail this year?"

Because we are staying green
by cleaning up our mailing list.

We mailed this card 
asking for mailing preferences.
People we didn't hear back
from were dropped.

To receive our mailings
or our email newsletter,
visit greenstage.org/maillist
or call 206-748-1551.



GreenStage — Seattle's Shakespeare in the Park Company
www.greenstage.org — 206-748-1551
PO Box 9594, Seattle, WA 98109

Board of Directors

Jeffery Taylor • Nicole Vernon • Ken Holmes
Sharon Angle • Pete Burford • Scott Gifford
Scott Smallbeck

GreenStage Staff

Artistic Director Erin Day
Managing Director Ken Holmes
Education Director Corey McDaniel
Facilities Manager Meredith Armstrong
Communications Director Amelia Meckler

Summer Camp Teachers

Zach Adair • Cara Anderson Ahrens
Sara Mountjoy-Pepka.

Program Design by Devlin Donnelly
www.devlindonnelly.com

GreenStage 2010 Summer Performance Schedule

SUN	MON	TUE	WED	THU	FRI	SAT
JULY 9 – AUGUST 14, 2010 See greenstage.org for maps and directions  Seattle Outdoor Theater Festival www.greenstage.org/sotf					9 Romeo and Juliet - 7pm Volunteer Park As You Like It - 7pm Fall City Park	10 As You Like It - 7pm Seward Park Romeo and Juliet - 7pm Volunteer Park 
11 As You Like It - 2pm Volunteer Park  Romeo and Juliet - 7pm Seward Park	12	13	14	15 Romeo and Juliet - 7pm Lower Woodland Park	16 As You Like It - 7pm Lower Woodland Park Romeo and Juliet - 7pm Judkins Park	17 As You Like It - 3pm Romeo and Juliet - 7pm Lower Woodland Park
18 As You Like It - 3pm Judkins Park	19	20	21	22 As You Like It - 7pm Lincoln Park	23 Romeo and Juliet - 7pm Lincoln Park	24 As You Like It - 3pm Lincoln Park Romeo and Juliet - 7pm Dottie Harper Park Burien
25 As You Like It - 3pm Discovery Park Romeo and Juliet - 3pm Lincoln Park	26	27	28	29 As You Like It - 7pm Lynndale Park Lynnwood	30 As You Like It - 7pm Camp Long	31 Romeo and Juliet - 7pm Camp Long As You Like It - 7pm Dottie Harper Park Burien
AUGUST 2010						
1 Romeo and Juliet - 3pm Discovery Park	2	3	4	5 Romeo and Juliet - 7pm Lynndale Park Lynnwood As You Like It - 7pm Magnuson Park	6 As You Like It - 7pm Redmond City Hall Romeo and Juliet - 7pm Fall City Park	7 As You Like It - 3pm Romeo and Juliet - 7pm Magnuson Park
8 Romeo and Juliet - 3pm As You Like It - 7pm Magnuson Park	9	10	11	12 Romeo and Juliet - 7pm Volunteer Park	13 As You Like It - 7pm Volunteer Park Romeo and Juliet - 7pm Redmond City Hall	14 As You Like It - 3pm Romeo and Juliet - 7pm Volunteer Park

this fall **GREENSTAGE** presents

HARD BARD

MACBETH

October - indoors,
location to be announced
directed by Ken Holmes

In the tradition of last year's hugely popular, over the top, Halloween HARD BARD production of *Titus Andronicus*, GreenStage tackles the bloody, spooky, and witch-filled tale of Macbeth. In Shakespeare's most infamous tragedy, three wild woodland witches present powerful prophecies to the great general Macbeth, propelling him and his lady toward a world of murder, mayhem, and madness.

