

GreenStage - 2009

# SHAKESPEARE in the PARK

**KING JOHN**

directed by Teresa Thuman

**the COMEDY of ERRORS**

directed by Ryan Higgins

**JULY 10 ~ AUGUST 15**

**Seattle • Lynnwood • Burien • Fall City • Redmond**

**GREENSTAGE**

is sponsored by



Media Sponsor







# arts IN THE PARKS

Located on the green space behind Redmond City Hall, these free performances are a great way to celebrate the summer!

## Performances for Children

FREE • Tuesdays at 12 noon • Redmond City Hall Green Space

**July 14**

### **Alleyoop Music**

Musical performance, games, and audience participation make for a fun afternoon!

**July 21**

### **The Jungle Books**

Book-It Repertory's adaption of Rudyard Kipling's classic tale about a boy growing up in the jungle with some WILD friends!

**July 28**

### **Lelavision**

Inventive instruments and vehicles combine for a fun and unique performance.

**August 4**

### **One World Taiko**

Japanese drum ensemble with heart pounding percussion.

**August 11**

### **Storytelling and Music**

Interactive music and stories for the family.

**August 18**

### **Junk Chime**

Play the big percussion instrument made up of recycled metal.

**August 25**

### **Dandelions and Daydreams**

Redwood Theatre presents the story of a girl who falls asleep in a garden.

## Performances for All Ages

FREE • Fridays at 7pm • Redmond City Hall Green Space

**July 17**

### **You're A Good Man Charlie Brown**

SecondStory Repertory presents a play based on the comic strips by Charles Shultz. This show is bright, fun, and adorable.

**July 24**

### **Comedy of Errors**

An early Shakespeare play about identical twins accidentally separated at birth. Performed by GreenStage.

**July 31**

### **Richard III**

Wooden O Theatre presents Shakespeare's play about the Machiavellian rise to power and subsequent short reign of Richard III of England.

**August 7**

### **Open Improv**

A fun night of comedy using several styles of improv. Performed by seasoned artists from Unexpected Productions.

**August 14**

### **Teen Performances**

Now in their 3rd year, the teens from the Old Firehouse Teen Center take the stage to perform original music and spoken word. Visit [www.theoldfirehouse.org](http://www.theoldfirehouse.org).

**August 21**

### **Unexpected Theater**

A variety of theatre, movie, pop-culture, and artistic styles. Bring your requests for an amazing hour of whatever YOU want it to be!



## GREENSTAGE HISTORY

# Welcome to GreenStage's Shakespeare in the Park!

As of this summer, GreenStage has produced all but four of Shakespeare's plays, as well as several new works in the Seattle Fringe Festival, and a few in our ongoing American Classics Series. Below is a list of all the plays we have produced. Can you name the four Shakespeare plays we haven't tackled?

- 2009 The Comedy of Errors • King John • Titus Andronicus
- 2008 Hamlet • Twelfth Night
- 2007 Two Gentlemen of Verona • Richard III • Skin of Our Teeth
- 2006 A Midsummer Night's Dream • Henry VI, parts 1, 2 and 3
- 2005 The Tempest • Henry V • Who's Afraid of Virginia Woolf?
- 2004 All's Well That Ends Well • Coriolanus • The Man Who Came to Dinner
- 2003 The Merry Wives of Windsor • The Merchant of Venice • The Night of the Iguana
- 2002 Henry IV, Part 2 • Taming of the Shrew • Touch of the Poet
- 2001 Troilus and Cressida • Macbeth • Squish
- 2000 Henry IV, Part 1 • Much Ado About Nothing • Winter's Tale • The Ballad of Young Will Jones
- 1999 Comedy of Errors • Timon of Athens • Volpone • The Bird • The Root of Chaos
- 1998 A Midsummer Night's Dream • The Two Noble Kinsmen • Richard II
- 1997 Julius Caesar • As You Like It • Cymbeline
- 1996 Measure for Measure (indoors at Langston Hughes) • Measure for Measure (outdoors in the parks) • Love's Labour's Lost
- 1995 Twelfth Night • Pericles • Titus Andronicus
- 1994 A Midsummer Night's Dream • The Cherry Orchard
- 1993 A Midsummer Night's Dream
- 1991 & 1992 Twelfth Night
- 1990 Romeo and Juliet
- 1989 Taming of the Shrew



**Thanks for joining us today!** Without an audience, theater can't exist. By simply being here, you become part of the play, and help us to bring it to life.

For over four-hundred years, audiences have been watching, reading, enjoying, and captivated by Shakespeare's plays. They have been a source of enlightenment, education, and entertainment the world over. There is little in our human experience that Shakespeare didn't write about: love, hate, madness, war, deception, jealousy, revenge, ambition, grief... it's all there. For over two decades now, GreenStage and our audiences have joined together to explore these magnificent plays.

GreenStage's mission is to inspire audiences to engage with live theater as part of their recreation. Our productions are free, fun, and family-oriented. We believe in presenting Shakespeare's plays simply, focusing on the text, story, characters and relationships in the play.

## WHY WE DO THIS FOR FREE

Because art is an essential part of our human existence. Because theater holds a mirror up to our lives, allowing us a vital glimpse inside ourselves. *Because experiencing a play is something that anyone should be able to do.*

GreenStage is committed to making Shakespeare's plays accessible, fun, exciting and FREE. **If you enjoy what we do, we invite you to make a donation.** No member of our audience is ever required to donate, but anything you can afford to give is greatly appreciated and helps to fund our programs. If you are unable to donate at this time, consider donating your time — volunteers are always welcome.

**Thank you for joining us this summer. Enjoy the show!**

## the **COMEDY** of **ERRORS**



Don't read into this play. It has nothing to do with you.

The situation proposed is so fully ridiculous that it's hard to imagine that anyone could find parallels between it and their own life. Twins are rare. Identical twins are even more rare. Twins that are separated from each other during childhood by a shipwreck: rarest. Having slaves is pretty taboo and traveling to Ephesus is rather unfashionable. Nobody does these things.

This is not your life. So relax and take amusement in the hardships of others as they find themselves in situations that you would never find yourself. There are no similarities.

Who has ever gone to a new place in order to lose themselves in strangers? Who has ever gone to a loved one only to be treated like a stranger? Who's ever been falsely accused, or been lied to by friends, or had to choose between fight and flight? Who's felt the relief when understanding and stability return to our turbulent lives?

Absurd situations have the power to trigger the familiar in our lives, despite how ridiculous they may be. We can find ourselves in the shoes of each character, confronting forces that seem bent on ruining their carefully plotted lives, no matter the seeming distance.

Or we can laugh it off. The choice is yours. Enjoy.

Ryan Higgins – director

## **KING JOHN**



Welcome to the tumultuous and ever shifting political world of William Shakespeare's rarely performed history *The Life and Death of King John*. Most people are generally familiar with England's King John as the monarch who signed the Magna Carta or as the legendary greedy, evil prince from the tales of *Robin Hood*. In this early play, probably written and performed circa 1590, Shakespeare diverges from the historical King John and tilts toward the legendary King infamous for his ruthlessness and incompetence. Shakespeare develops a contradictory and reckless king who changes allegiances easily for political expediency, yet forges a loyal brotherly bond with the illegitimate son of his deceased brother, King Richard the Lionhearted.

While working on *King John*, considered by some to be a "minor" play, it has been common to find passages that seem oddly familiar when compared with later "major" works; many of the characters, the moments, the logic in the arguments, and even passages of text echo aspects of *Macbeth*, *Richard III*, *Henry V*, *King Lear* and others. Unique to *King John*, however, is the central importance of the role of mothers. Here we are introduced to three influential mothers (Eleanor, Constance and Lady Faulconbridge) all of whom play a vital role in the lives of their sons, while such mothers are conspicuously absent from many of Shakespeare's plays.

Of course even this lesser known but endlessly fascinating work has provided a meaningful backdrop from which to consider our current political environment. We all know the dangers and divisions that rise when power is exerted for no higher social aim than to simply maintain that power, yet the pattern is continuously repeated through history. However, I also believe that we are currently reexamining the very nature of leadership and understanding this oft repeated vicious cycle can usher in a hopeful – even idealistic – era of reasoned justice, ethical power and a forward-looking optimism towards the future.

Teresa Thuman – director





# SHAKESPEARE in the PARK

JULY 10 – AUGUST 15

## the COMEDY of ERRORS

directed by RYAN HIGGINS

### CAST

(in alphabetical order)

Patrick Bentley ..... Adriana  
 Michael D. Blum ..... Egeon / Courtezan  
 Courtney Bohl ..... Antipholus Of Ephesus  
 Esra Chelen Güler ..... Dromio Of Syracuse  
 Sara Coates ..... Pinch / Angelo  
 Rio Codd ..... Luciana  
 Adria LaMorticella ..... Dromio Of Ephesus  
 Don MacEllis ..... Luce / Officer / Abbess  
 Eli Sklov Simons ..... Duke Solinus / Merchant  
 Jessica Stepka ..... Antipholus Of Syracuse  
 Erica Neils ..... Stage Manager

## KING JOHN

directed by TERESA THUMAN

### CAST

(in alphabetical order)

Zach Adair ..... Robert Faulconbridge / Austria / Bigot  
 Erin Day ..... Constance  
 Anthony Duckett ..... Arthur / Henry  
 Ashley Flannegan ..... Blanche / Executioner 2 / Melun  
 Matthew Gilbert ..... Salisbury / Chatillon  
 Drew Dyson Hobson ..... Hubert  
 Josh Krupke ..... King Philip  
 Corey McDaniel ..... King John  
 Amelia Meckler ..... Lady Faulconbridge / Pembroke  
 Andrew Perez ..... Pandulph  
 Walayn Sharples ..... Eleanor  
 Chris Shea ..... Lewis  
 Daniel Stoltenberg ..... Philip the Bastard  
 Katie Mesaros ..... Stage Manager

### Production Team

Janessa Jayne Styck ..... Costume Designer - The Comedy of Errors  
 DodiRose Zooropa ..... Costume Designer - King John  
 Paul Ray ..... Fight Director  
 Paul Budraitis ..... Movement Coach  
 Laura Garcia ..... Properties Designer  
 Erin Day ..... Voice and Text Coach  
 Katherine Busz ..... Wardrobe Supervisor  
 Erin Hauk ..... Production Manager  
 Amelia Meckler ..... Publicity  
 Liam Enns ..... House Manager

### SPECIAL THANKS

Michelle Atkins • Balagan Theatre • Brad Beeshaw • Callie Berry • Melinda Bunnage • Peter Burford • Louise Butler  
 • Tony Driscoll • Jason Harber • Lisa Holmes • Dan Iverson • Fremont Arts Council • Julia Griffin • Isabel Hamilton  
 • Lee Ann Hittenberger • Jeff Hodges • Mark Pinkosh • Jules Posadas • Julianna Ross • S.P.A.C.E. • Seattle Parks and Recreation

### Solstice Parade Shout Out!

Organizers: Nicole Vernon • Jerry Smith • Eddie Griffiths  
 Float crew: Meredith Armstrong • Laura Brackley • Brandon Brown • Banton Foster • Sam Hagen  
 • Geni Hawkins • Don MacEllis • Mark McQuinn • Amelia Meckler • Erik Swanson • Alison Wiles

## ABOUT THE ACTING COMPANY



**Zach Adair**

(Robert Faulconbridge / *Austria* / *Bigot* - *King John*)

Zach is thrilled to be in his first production with GreenStage. His other Shakespeare credits include Sebastian in *Twelfth Night* with Eclectic Theater Company, and Flute in *A Midsummer Night's Dream* at Cornish College of the Arts. He was most recently seen in Artattack Theatre Ensemble's *Embarrassed!*, and is one of the founding members of Backwards Ensemble Theater Company. Zach would like to thank Ken, Teresa, and all the other folks that help make GreenStage happen for this amazing opportunity.



**Patrick Bentley**

(Adriana - *Comedy of Errors*)

Patrick is pleased to be making his debut with GreenStage. A recent transplant to Seattle, Patrick has appeared locally with Balagan Theatre, Eclectic Theater, and Auburn Regional Theatre. He has also performed with The American Shakespeare Center, Washington (DC) Shakespeare Company, and the Lexington Shakespeare Festival, among others. He holds a Master of Letters and a Master of Fine Arts in Shakespeare. Patrick is really glad you came to share in some outdoor Shakespeare-ing with us today.



**Michael D. Blum**

(Egeon / *Courtesan* - *Comedy of Errors*)

Actor, director, storyteller and teacher, Michael was a fixture on the Albuquerque, NM theater scene for over 25 years before relocating to the Pacific Northwest. During his time in the Southwest, he co-founded two Hispanic theater companies; La Compañía De Teatro de Alburquerque, Inc. in the 1980's, and more recently, Teatro Nuevo México, where he served as Co-Artistic Director for four years. His work has been seen as far afield as Europe, Mexico, and South America, including a stint with the National Theater of Venezuela in Caracas. He is also an award-winning voice talent in both English and Spanish, providing voices for advertising, theater, television, and audio books. He recently completed his first Seattle show, *Erotic Shorts*, at the Little Red Studio.



**Courtney Bohl**

(Antipholus of Ephesus - *Comedy of Errors*)

Courtney is excited to join GreenStage for their 21st season, and she is particularly excited to take on this role. Courtney has performed Shakespeare both indoor and outdoor for such companies as The Idaho Shakespeare Festival, Great Lakes Theatre Festival, Illinois Shakespeare Festival, Magical Theatre Company, and in Seattle with Sound Theatre Company. She has played both male and female roles, and on occasion, females playing males. Favorites include Portia in *Julius Caesar*, Rosalind in *As You Like It*, Tybalt in *Romeo and Juliet*, and the bear in *The Winter's Tale*. Love to Mom, Dad, L Bo and Geoff.



**Esra Chelen Güler**

(Dromio Of Syracuse - *Comedy of Errors*)

Esra is delighted to be making her debut with GreenStage. She is a fresh graduate from Cornish College of the Arts and her most recent Cornish credits include Scheherazade in Mary Zimmerman's *The Arabian Nights*, directed by John Farrage, as well as Martha in *The Children's Hour*, directed by Bonnie Cohen.



**Sara Coates**

(Pinch / Angelo - *Comedy of Errors*)

Sara is a recent graduate from the Drama department at the University of Washington. Some of her favorite roles there include Sara in *Stop Kiss* and The Rabbi, Hannah, and Ethel Rosenberg in *Angels in America, Part 1: Millennium Approaches*. She was also very active in the theatre program at Edmond's Community College. Her favorite roles include Macon Hill in *Abundance*, Toinette in *The Imaginary Invalid*, and Helena in *A Midsummer Night's Dream*. Sara is a seasonal cast member at Walt Disney World, where she is a trained stilt walker and parade performer. Sara would like to thank her Mom, Ellouise, for the endless support of her passions.



## ABOUT THE ACTING COMPANY



**Rio Codda**  
(Luciana - *Comedy of Errors*)

Rio is glad to be back in Seattle and feels privileged to be working for GreenStage. He is also very ecstatic to finally be able to wear a corset. Rio is a 2006 alumni from Cornish College. Some of his favorite roles have been Joey in *Your Disco Needs You*, Lenny in *Marisol* at Cornish College, and Russel in *Plainsong* at Book-It Repertory Theater. As always, Rio would like to thank his wife and dog for their enormous amount of support and patience.



**Erin Day**  
(Constance - *King John*)

Erin is tickled pink to be back with GreenStage after taking time off to have her magnificent son, Emmett. Since moving from Washington DC, Erin has spent many seasons gleefully playing in the parks with GreenStage. Some past roles include Rosalind in *As You Like It*, Timon in *Timon of Athens*, and Margaret in *Henry Six parts 1, 2 and 3* and *Richard III*. In GreenStage's American Classic Series, Erin had the pleasure of playing Nora in *A Touch of the Poet*, Mrs. Antrobus in *The Skin of Our Teeth*, and Martha in *Who's Afraid of Virginia Woolf?*. Thanks for coming, enjoy the show. Peace.



**Anthony Duckett**  
(Arthur / Henry - *King John*)

Anthony is (finally!) working with GreenStage for the first time and couldn't feel more bubbly about it. Anthony's acting adventures this past year have come most recently in the form of Peter in collaboration with the Young Playwrights Program at ACT, and as Nelson in *End Days* at Seattle Public Theater. Other recent credits include Marek in *My Antonia* at Book-It Repertory Theater, Miggot in *The Emperors New Clothes* at Second Story Rep, and Tiger Lily in *The Snow Queen*; *Gerdas Journey* with Theater Simple, among others. Anthony is a 2008 graduate of Cornish College of the Arts with a BFA in theater, and cannot wait for *Lost* to return in January. All hail King John, so say we all!



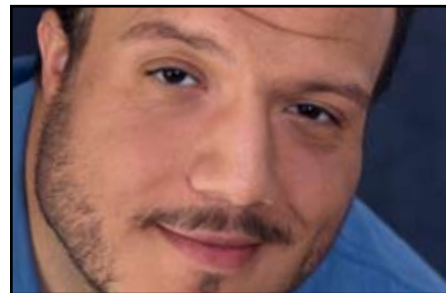
**Ashley Flannegan**  
(Blanche/Executioner 2/Melun - *King John*)

Ashley is a well known Shakespeare addict and English history geek, so it's particularly appropriate that she is spending her summer immersed in the world of *King John* in her second year with GreenStage. Since moving to Seattle, Ashley has been seen around town doing things like taking her pants off in Book-It Repertory Theatre's *Even Cowgirls Get the Blues*, sporting a gnarly hangover in Renton Civic Theater's *Proof*, and sassing her older sister in Seattle Musical Theatre's *Jane Eyre*. She has enjoyed the roller coaster that has been the last year and a half in Seattle, and she can't wait to see what comes next! Ashley sends out a big dose of love and appreciation to her friends, family and co-workers who faithfully support all her zany antics in the theatre.



**Matthew Gilbert**  
(Salisbury / Chatillon - *King John*)

Matthew is excited to make his GreenStage debut with *King John*. Previous credits include Glazier in *A Dream Play*, Hal in *Henry IV Part One*, Daboi in *The Misanthrope* and Ophelia in *The Fifteen Minute Hamlet*. Matthew received his BA in Professional Acting at the London Academy for Music and Dramatic Arts. He would like to thank his friends and family for their continual love and support. Thanks J.G.



**Drew Dyson Hobson**  
(Hubert - *King John*)

This is Drew's sixth season returning with GreenStage, and he feels gracious and lucky to have had so much play time in the park with his favorite playwright and some actors who he now considers family. Drew is a graduate of Western Washington University where he received his BA in theatre, and now resides in Seattle making his living doing everything that he loves best – performing in touring children's theatre with Last Leaf Productions, teaching theatre – including improv, playwrighting, and basics of acting – hosting karaoke, and being a professional DJ. Life is lovely when you love what you do. Drew would like to thank Ken Holmes and his fellow GreenStagers for their love, support, and many epic nights of Karaoke. He would also like to send his love and thanks to his family and love of his life, Kendra.



## ABOUT THE ACTING COMPANY



**Josh Krupke**

(King Philip - *King John*)

Josh is happy to make his GreenStage debut this summer! He has recently been working extensively with Village Theatre in productions of *Stunt Girl*, *Beauty and the Beast*, *Aida*, *Little Women* and *Evita*, as well as several staged readings. He's also worked with Civic Light Opera, Seattle Public Theatre, Driftwood Players, Showtunes!, Renton Civic Theatre, Snoqualmie Falls Forest Theatre, Burien Little Theatre, and Capital Playhouse. Favorite roles include Pablo Picasso in *Picasso at the Lapin Agile*, John the Baptist in *Godspell*, and Lysander in *A Midsummer Night's Dream*. Josh sends his love and thanks God, to his beautiful wife Rebekah, and to his parents.



**Don MacEllis**

(Luce / Officer / Abbess - *Comedy of Errors*)

Don is back with GreenStage after a year of fighting crime and villains in the independent zombie flick world – yup, just when you thought it was safe to go back to the park. With GreenStage, Don has appeared in *Henry IV Parts 1 and 2*, *Henry VI*, *Merchant of Venice*, *Merry Wives of Windsor*, *Two Gentlemen of Verona*, and *Night of the Iguana*, and would feel like a cheating husband if he didn't mention *Othello* at Balagan – just a few of his proudest favorites. Don recently directed *Famous Last Words* for Burien Little Theatre. Watch for him this fall in a Washington State Lottery commercial. He thanks Ken, Ryan and his loving wife Laurie. Now sit back and enjoy in a calm and submissive manner.



**Amelia Meckler**

(Lady Faulconbridge/Pembroke - *King John*)

Amelia left New York in 1997 and is now what they call a lifer with GreenStage. Favorite roles include Elizabeth in *Richard III*, Katarina in *The Taming of the Shrew*, Ulysses in *Troilus & Cressida*; and non Shakespearean turns as Honey in *Who's Afraid of Virginia Woolf?*, Maxine in *The Night of the Iguana*, and Mammoth and Fortune Teller in *The Skin of Our Teeth*. Non-GreenStage forays include *Medea* with Theater Machine, *Marat/Sade* at Balagan Theatre, and *Kvetch* at Theater Schmeater. Love to family, friends and Apples to Apples. Catch Millie this fall in *The Creation of the World and Other Business* at Theater Schmeater!



**Adria LaMorticella**

(Dromio Of Ephesus - *Comedy of Errors*)

Adria is proud to celebrate her one year anniversary of living in Seattle having recently received her BA from Western Washington University. She is perfectly delighted to be working with GreenStage for the first time this summer. Most recently, Adria was seen playing Raeanne in The Annex Theatre's production of *Love's Tangled Web*. Some of her favorite past roles include Stephano in *The Tempest*, Lucy in *You're a Good Man Charlie Brown*, and Tweedledee, the Dormouse, and many more in *Alice in Wonderland*. Adria would like to thank GreenStage for giving her such a wonderful opportunity to work with them and to her friends and family who tirelessly support her in all her theatrical endeavors.



**Corey McDaniel**

(King John - *King John*)

Corey is excited to be working for the first time with GreenStage. He has been seen on stages such as the Fabulous Fox Theatres, The Hollywood Bowl, The Metropolitan Opera House of NYC, and Teatro Sistina in Rome. Corey was recently seen in *Moby-Dick* or *The Whale* with Book-it Repertory Theatre. Other favorites include Hector in *Troilus and Cressida*, Colonel Brandon in *Sense and Sensibility*, and Dexter in *The Philadelphia Story*. Television credits include *Days of Lives* and *Beverly Hills 90210* (the original). In Los Angeles Corey co-founded the Obsidian Court Theatre Company and was a staff director for Children's Theatre Experience before becoming Artistic Director for the Sho Kosugi Performing Arts Academy in Nagoya, Osaka and Tokyo Japan.



**Andrew Perez**

(Pandolph - *King John*)

Andrew is thrilled to make his GreenStage debut in this production of *King John*. He is a recent graduate from Seattle University with Honors in Drama where he acted in *Romeo and Juliet*, *The Life of Galileo*, *Tartuffe*, and *Three Sisters*. His most recent project was composing, musical directing, playing piano and guitar, and conducting for *RAGNAROK: The Twenty-Minute Musical* performed at SU. Other credits include costume design for *In the Kafka Colony*, The Student in *Ghost Sonata* at Open Circle Theatre, Smee/Mr Darling in *Peter Pan* (2005 SARTA Award for Best Supporting Actor), writing, directing, acting, and producing for *Eight to One* (LERT), and composing for *CAMPING* (2009 24 Hour Film Race) and SU's *The Vagina Monologues*.





## ABOUT THE ACTING COMPANY



**Walayn Sharples**

(Eleanor - *King John*)

Walayn feels like a kid in a candy store getting to play with the Bard in the parks this summer. Recent credits include *Jane Eyre* with Seattle Musical Theater, *Rabbit Hole* and *Well* (footlight award) with ReAct, and *To Kill a Mockingbird* at Intiman. Other past favorites include Daisy in *Driving Miss Daisy*, Madam Arcati in *Blithe Spirit* and Dotty in *Noises Off*. A proud member of Effective Arts, she also enjoys film and voiceover work, most recently playing the villainous Renee in *Nancy Drew and the Crystal Skull*. On her off days you will find her camping by the river, hiking in the woods, or driving to her favorite latte stand. Many thanks to the fantastic Teresa, cast and crew and her wonderful husband and daughters.



**Chris Shea**

(Lewis - *King John*)

Chris, an Ohio native, is pleased to make his GreenStage debut. Most recently, he was in *Gutenberg! The Musical!* with ArtsWest. Locally, he's also worked with Seattle Musical Theatre and Ghost Light Theatricals. Chris is a proud graduate of the acting program at PCPA Theaterfest in Santa Maria, CA. His favorite roles include the Emcee in *Cabaret*, John Wilkes Booth in *Assassins*, and Jamie Tyrone in *Long Day's Journey Into Night*. Thank you for supporting live theatre!



**Eli Sklov Simons**

(Duke Solinus / Merchant - *Comedy of Errors*)

Though rejected at an early age by the famous Mickey Mouse Club, Eli has been involved in theater since 1985 when he auditioned for a local production of *Annie*. In the late '80s and early '90s Eli studied acting in Tacoma and Seattle and became part of the group that evolved into the company currently known as GreenStage. This is his 17th production in a dozen or so seasons with GreenStage. Eli has also appeared at Seattle Public Theater, Open Circle, Burien Little Theater, and Performance Circle Theater. Favorite roles include Algernon Moncrief in *The Importance of Being Earnest*, Feste in *Twelfth Night*, Pistol in *Henry V*, Zombie #2 in *Sunken*, Pandarus in *Troilus and Cressida*, and Cassius in *Julius Caesar*.



**Jessica Stepka**

(Antipholus of Syracuse - *Comedy of Errors*)

Jessica is proud to be celebrating her third year with GreenStage, and to help them usher in their 21st season! A Northwest native, she has been acting for as long as she can remember, and she received her BFA from Cornish College of the Arts. She is also a member of Ghost Light Theatricals, and had a blast working on *Rosencrantz and Guildenstern are Dead*, *The Beaux Stratagem*, *Phaedra*, *Tartuffe*, *The Misanthrope*, *Measure for Measure* and their annual fundraiser *Battle of the Bards*. Jessica may sometimes be seen at local variety nights performing her clowns Bop and McCullough. She sends much love to all the companies she has had the privilege to work with, as well as her friends and family. No Sleep Till Brooklyn!



**Daniel Stoltenberg**

(Philip the Bastard - *King John*)

This is Daniel's first show with GreenStage, and he is very happy to get the chance to explore a Shakespeare play that very few people have seen before. He most recently appeared as Sir Andrew Aguecheek in *Illyria* at Redwood Theatre, and Sparky in *Plaid Tidings* at ArtsWest (catch him again this holiday season!). He hopes you enjoy your bragging rights after seeing *King John*, and he thanks you for supporting live theatre!

## ABOUT THE COVER ART



The art on the cover of our program, as well as our posters and other marketing materials, is from an original oil painting by longtime GreenStage supporter Karen Richter. More of Karen's art can be seen at [www.karenrichterart.com](http://www.karenrichterart.com).

If you want to own this one of a kind painting, it will be raffled off on August 8th after our 7pm performance of *The Comedy of Errors* at Magnuson Park.

Raffle tickets will be available all day long, and you must be present at the drawing to win. Watch our website for more details! [www.greenstage.org](http://www.greenstage.org).

## SIMPLE SUMMERIES of the SUMMER SHOWS by Courtney Bohl

## THE COMEDY OF ERRORS



**Antipholus of Syracuse lands in Ephesus** in search of his long-lost twin brother. He brings with him a servant Dromio, who also has a long-lost twin brother. Unbeknownst to the boys, and quite coincidentally, Antipholus' father Egeon has also landed in Ephesus searching for them. Antipholus sends Dromio on an errand, and who should appear but Dromio's identical twin brother, who, creatively, is also named Dromio. Antipholus of Syracuse of course mistakes Dromio of Ephesus for his own servant, and follows him home for dinner. Confused yet? Imagine how the characters feel!

Antipholus of Syracuse is berated by Adriana, who has mistaken him for her husband, the other Antipholus. However, he is instantly captivated by Adriana's unmarried sister, Luciana. Much to Luciana's dismay, he begins to woo her. She scolds him for his seeming unfaithfulness to her sister.

Meanwhile, the native Antipholus of Ephesus has been locked out of his own home. He vows revenge on his wife by swearing to bestow a gold chain on a courtesan, and he persuades the goldsmith to meet him at the courtesan's home for dinner. Of course the goldsmith runs into Antipholus of Syracuse on the way to the courtesan's, and gives him the chain. Antipholus of Syracuse has had enough weirdness for one day, and decides to make a hasty retreat. His escape is prevented by the courtesan who has been promised the valuable chain by Antipholus of Ephesus.

Throw into the mix a quack doctor, an abbess, and a bawdy kitchen wench... it's an evening of mistaken identities, slapstick buffoonery, and deft wordplay that will keep your head spinning!

## KING JOHN



**It's good to be King** - unless of course, you have to resort to deception, manipulation, and murder to keep your crown! It's all in a day's work for this title character, and he's not about to relinquish his title to anyone...

King John has ascended to the throne after the death of his brother, Richard the Lionheart (of Robin-Hood fame) and he has some big shoes to fill. Not surprisingly, the claims of rightful heir to the throne start rolling in, and before long, we have a war on our hands. Luckily, Shakespeare has condensed the entirety of King John's 17 year reign to just the juicy bits.

John's young nephew, Arthur, and his mother, Constance, claim that Arthur is the true heir, and switch allegiance to France, hoping the French king, Philip, will help overthrow John and restore Arthur to the throne. Another Philip (a.k.a. "The Bastard"), who bears a striking resemblance to the late King Richard, allies himself with John and the two mighty armies collide in Angiers. Much to the dismay of Constance, the citizens of Angiers propose a treaty between France and England by marrying off the Dauphin to King John's niece, Blanche. Then in swoops Cardinal Pandulph from Rome, who excommunicates John and convinces King Philip to break the peace and challenge the English forces. So much for a happy ending...

The English forces kidnap Arthur, giving King John his chance to eliminate the threat to his throne. Everyone rushes back to England, where things really take a turn for the worse. King Philip's son arrives and convinces the English lords to abandon John and join the French cause.

Will Arthur survive? Will King John keep his throne? Will Phillip "The Bastard" find out who his true father is? Watch and see!





## ABOUT THE PRODUCTION TEAM

### Teresa Thuman

(Director - King John)

Teresa has directed locally at Theater Schmeater, Cornish College of the Arts, Civic Light Opera, Bainbridge Performing Arts, Driftwood Players and numerous new-work projects for the Mae West Fest, Fringe Festival, Theatre4Play Festival, TPS Beyond the Frame, Theatre Babylon and the Experimental Theatre Project. Teresa launched Sound Theatre Company in 2006 with the site-specific production of *The Tempest*, performed in the water and on the shore of Lake Sammamish, and *Troilus and Cressida* in a former navy hangar at Magnuson Park. Other Shakespeare credits include *Henry V* (University of Portland), *As You Like It* (Central Coast Shakespeare Festival), *Pericles* (Cornish), and serving as Assistant Director for *The Merchant of Venice* and *The Merry Wives of Windsor* at Oregon Shakespeare Festival. Teresa has taught at UW School of Drama PATP, Cornish College, Freehold ETI and served eight years as an Artist-in-Residence at PCPA Theatrefest in California, where she taught in the Conservatory and acted in over thirty productions.

### Ryan Higgins

(Director - Comedy of Errors)

Ryan has enjoyed every last part of getting the chance to direct for GreenStage. Having spent the last three summers as an actor for them, it's an honor. Last fall, Ryan directed *Othello* for Balagan Theatre, where he is an Executive Member and the Facilities and Bar Manager. In Seattle, Ryan has had the opportunity to work with Seattle Shakespeare Company, Balagan Theatre, Theater Schmeater, Live Girls, Work It Productions, Seattle Semi-Pro Wrestling and the Beta Society. Originally from New York, Ryan has taken delight in the beautiful Northwest. Much love to his family, friends, Balagan crew, and Julia. If you meet Ryan, say hi. Cheers.

### DodiRose Zooropa

(Costume Designer - King John)

This is DodiRose's third year with GreenStage. Past productions include *Hamlet*, *The Two Gentlemen of Verona*, *Act a Lady*, *The White Devil*, and *Troilus and Cressida*. She attended Cornish College where she studied costume and scenic design. She also does freelance commission design of corsets, Steampunk and fetish clothing. Her next project is will be the

Fashion Show for Steamcon followed by the Steampunk Exhibition Ball. Thanks Mum and much love to Michael.

### Janessa Jayne Styck

(Costume Designer - Comedy of Errors)

Janessa is a graduate of Illinois Wesleyan University in Bloomington, Illinois where she studied under Tony-nominated Marcia McDonald. During her time at Wesleyan she interned at the acclaimed Glimmer Glass Opera in upstate New York. She also placed second at the 2006 South Eastern Theatre Conference Costume Design Competition in the undergraduate division. Since her relocation to Seattle in 2007, Janessa has been honored to design for such theatre companies as Book-It Repertory Theatre, Seattle Musical Theatre, and Youth Theatre Northwest. Janessa is delighted to have been asked back for a second summer with GreenStage and is looking forward to working with Snoqualmie Fall Forest Theater on their upcoming production of *Oklahoma*.

continued



Trust No One

Intiman Theatre presents  
Theatre for a New Audience's Production of

# OTHELLO

By William Shakespeare | Directed by Arin Arbus

**JULY 2 - AUGUST 2**

STRAIGHT FROM  
NEW YORK  
THIS PRODUCTION IS  
**"BLAZING  
ACROSS THE  
STAGE"**  
FOR A  
LIMITED RUN.

-The New York Times

TICKETS  
**206.269.1900**  
**www.intiman.org**



## ABOUT THE PRODUCTION TEAM

continued

### Erica Neils

(Stage Manager - *Comedy of Errors*)

Erica is thrilled to be joining GreenStage, having an adventure is stage managing. Most often, Erica can be found acting. A 2008 Graduate of Cornish College of the Arts - Acting Program, her notable roles are Rosalind in Eclectic Theatre Company's *As You Like It* and Merluce the Maid in Seattle Shakespeare Company's *The Miser*. At Cornish she played Mrs. Grogan/Mrs. Drapes/Nurse Receptionist in *Cider House Rules*, Diana Trapes in *The Beggars Opera*, and Anitra in *Peer Gynt*. Erica's voice can be heard on Youngtribalvoices.com playing the roles of Mother/Zubaida/Naima and she was involved in Backward Theatre Company's Virgin Playwrights staged reading of *In the Spirits of Our God* playing Sister James. Erica hopes to return to being on stage very soon.

### Katie Mesaros

(Stage Manager - *King John*)

Katie comes from Edmonds, WA and is excited to work with GreenStage this summer. Last year she worked as a stage manager at Busch Gardens in Williamsburg on their shows *Emerald Beat* and *Jack is Back*. Before that she was studying theatre at Whitworth University (graduated class of '08) where here credits include stage managing Brecht's *Antigone* and *The Cherry Orchard*. Katie has always had a love of theatre and is looking forward to sharing that love with the audiences at the parks. Lastly, Katie would like to say thanks to her family and friends who have always supported her.

### Paul Ray

(Fight Director)

Paul is thrilled to be involved with GreenStage this summer. Paul holds a BFA in Acting, and is an Advanced Actor/Combatant with the Society of American Fight Directors. Paul's choreography has been seen with the Driftwood Players, Wooden O, Sound Theater, Theater Schmeater, Renton Civic, Seattle Public Theater to name just a few. Paul also substitute teaches combat at Cornish College. He was seen last year in the Seattle Opera ELEKTRA as an actor/fighter. Enjoy!

### Paul Budraitis

(Movement Coach)

Paul is a director, writer, performer, and teacher of acting and stage movement. He just returned from Vilnius, Lithuania, where he took part in *The Cherry Orchard 2009*, a genre-defying theatrical film project directed by acclaimed Finnish director Kristian Smeds. Paul currently has a solo performance piece and an experimental ensemble project in development. He is a graduate of the Lithuanian Music and Theatre Academy, where he studied under the mentorship of the visionary director Jonas Vaitkus. Paul is grateful to be working with GreenStage for the first time.

### Laura Garcia

(Properties Designer)

This is Laura's twelfth show with GreenStage and she is proud to be returning in the starring role of Props Mistress. She has been lucky enough to have played various other roles throughout the years including Director,

Assistant Director, and Stage Manager (with a few shows off here and there). She is so thankful for free Shakespeare in the parks, a place to call home and her three beautiful daughters! Happy 21st Birthday GreenStage, MUAH! BUAIDH NO BAS

### Erin Hawk

(Production Manager)

Erin is delighted to return to the parks this summer for her third season with GreenStage. Educated at Cornish College, she has spent over eleven years in theater working for companies including Red Card Productions, Theater Schmeater and Four Seasons Theatre in Madison, WI. She most recently served as stage manager for Burien Little Theatre's production of *The Lady's Not For Burning*, directed by Ken Holmes. She thanks her friends and family, especially her husband Randall and her theater-dog-in-training, Pollywog.

### Liam Enns

(House Manager)

This is Liam's second year working with GreenStage and he is very excited to be involved with this year's great season. Last season he worked as house manager and substitute stage manager for *Twelfth Night* (which was a blast). In the past, Liam has performed in *Grease*, *The Odd Couple* (female version), *Rumors*, Carlo Goldoni's *The Liar*, *Footloose*, *I Bet Your Life*, and *The Vampyre*. He is currently working for his bachelor's degrees in History and Political Science at Western Washington University. Liam would like to thank his friends and family for supporting him throughout the years.

### Ken Holmes (Producing Artistic Director)

Since 1993, Ken has appeared in twenty productions with GreenStage, and directed six. Ken has also worked on stage with many other theaters around town, most recently as Gloucester in *King Lear* with Rough Play Productions. As far as Shakespeare is concerned, he has been involved (one way or another) in productions of all but three of Shakespeare's thirty-eight plays. Ken is also a freelance graphic designer and photographer. He lives in Seatac with his lovely wife Lisa and their awesome doggy Harvey (you too can be his Facebook friend). At the end of August, he will also become a dad for the very first time.

### Meredith Armstrong (Facilities Manager)

Despite the improved lighting, Meredith still finds herself fumbling about the GreenStage storage space. How else is one supposed to find anything if one doesn't simply trip over it, right? At least it's an activity that keeps her busy and out of other trouble. When not loaning out or checking in props and costumes, you'll find her doing all sorts of random creative-type things like acting, dialect coaching, bellydancing, costuming, and

writing. She sends love and thanks to her husband and their cat, her collection of reference books, her serger, and the Oxford comma.

### Cara Anderson-Ahrens (Education Director)

Cara has been working with GreenStage since 2005, when she directed the summer production of *The Tempest*. Since that time, she has worked with Magnuson Park Community Center to create GreenStage's education summer camps. Cara is also acts and directs around town, and also works as Education Director for the Southern Sudanese Community of Washington.

### Z. Sharon Glantz (SOTF Festival Manager)

Sharon keeps sane by writing, producing and publishing plays, books and Dognostication cards as The Sanity Patrol Press ([www.thesanitypatrol.com](http://www.thesanitypatrol.com)). She toured full length plays about diversity, sexual harassment, HIV/AIDS and aging for training programs in corporations and government agencies. She wrote the original script for *Through The*

continued





4  
CULTURE

**Mel Brooks' new musical and self-proclaimed "love letter to Broadway"**

**"...comes at you like a supersonic train"**  
- The New York Times

**Winner of a record-breaking 12 Tony Awards and 11 Drama Desk Awards**

**Sept. 18 – Oct. 4**

**(206) 363-2809**

**SEATTLEMUSICALTHEATRE.ORG**

MAGNUSON PARK, BUILDING 47  
7400 SAND POINT WAY NE

## GREENSTAGE STAFF continued

*Eyes of a Friend*, multi-media on the holocaust, a three minute laser show on the history of Singapore as well as three other full length plays. *Pieces of Stages of Ages: A Manual of Corrective Parenting*, written in collaboration with Elaine Child-Gowell Ph.D., were turned into two one-act plays that received festival awards. She managed the program for the Pacific Northwest Writers Conference and founded of the Northwest Playwrights Guild. She is adept at herding cats.

### Peter Burford

(Artistic Associate)

Peter has been around GreenStage since 2001. He especially likes directing plays and occasionally acts as well (preferably not both at the same time – see below). He also works on a some of the other stuff that goes into making a theater company run – like web design, production management, poster design, set design, building, cleaning, and generally helping out. Peter has directed four of the five plays in GreenStage's American Classics Series – *A Touch of the Poet*, *The Night of the Iguana*, *Who's Afraid of Virginia Woolf?*, and *The Skin of Our Teeth* – and is very proud of them. Long ago, Peter co-founded Theatre Paradox and produced seven plays including *The Glass Menagerie* (director), *Betrayal* (director), *Equus* (actor), *The Dumb Waiter* (director, actor), and *Rosencrantz and Guildenstern are Dead* (director, actor). Peter works for Headlight Software and enjoys traveling, photography, scuba diving, and taking your money at poker. Hi Alice!

2009-2010

**20<sup>th</sup>**

anniversary season

**Book-It**

REPERTORY THEATRE

**A CONFEDERACY OF DUNCES**  
September 16 – October 11, 2009

**EMMA**  
October 20 – November 22, 2009

**THE RIVER WHY**  
February 9 – March 7, 2010

**NOVEL WORKSHOP SERIES**  
Dates TBA April/May 2010

**THE CIDER HOUSE RULES, PART ONE: HERE IN ST. CLOUD'S**  
June 9 – July 11, 2010

Subscriptions  
on Sale Now 206.216.0833

**www.book-it.org**



Seattle's **SHAKESPEARE** in the **PARK** Company

## SUPPORT GREENSTAGE

GreenStage is 21! We're finally able to step up to the bar!

In the past two decades we have produced over 50 shows, presented all but 4 of the plays in Shakespeare's canon, brought new works to the Seattle Fringe Festival, and created our popular American Classics Series.

Our commitment has always been to stage plays simply, and especially with Shakespeare to stay true to the text and story. We want to make theater lovers out of everyone, which is why we perform for free in open spaces. Anyone can show up, sit down, and enjoy a show.

You, our audience, made all this possible. Your donations allow us to continue to bring the plays of Shakespeare to life. Your support allows us to add more venues, increase our production values, and attract an ever wider audience.

Last summer, GreenStage took over management of the Seattle Outdoor Theater Festival which is now in its ninth year. This little theater festival that started as a cooperative venture has become the launching pad for the Seattle outdoor theater season. You helped make that festival happen.

Join me in making a donation to GreenStage today. You can use the form below, or donate online at **[www.greenstage.org/donate](http://www.greenstage.org/donate)**.

If you are on Facebook, be sure to become a fan of GreenStage. You can also make a contribution without leaving Facebook.

Thank you very much for coming to see a play today!

Ken Holmes  
Producing Artistic Director

**GreenStage**  
Seattle's Shakespeare in the Park Company

[www.greenstage.org](http://www.greenstage.org)  
206-748-1551  
PO Box 9594, Seattle, WA 98109

### Board of Directors

Terence Artz - President  
Jeff Taylor - Secretary  
Ken Holmes - Treasurer  
Sharon Angle - Board Member  
Peter Burford - Board Member  
Scott Gifford - Board Member

### GreenStage Staff

*Producing Artistic Director*  
Ken Holmes

*Education Director*  
Cara Anderson-Ahrens

*Seattle Outdoor Theater Festival Manager*  
Z. Sharon Glantz

*Facilities Manager*  
Meredith Armstrong

*Artistic Associates*  
Peter Burford  
Erin Day  
Amelia Meckler



**YES! I want to support free theater!**

Donate online at [www.greenstage.org](http://www.greenstage.org)

Name \_\_\_\_\_

Address \_\_\_\_\_

City \_\_\_\_\_ State \_\_\_\_\_ Zip \_\_\_\_\_

Phone \_\_\_\_\_ Email \_\_\_\_\_

☐ Check (payable to GreenStage) ☐ Visa/Mastercard

Card number: \_\_\_\_\_

Expiration Date: \_\_\_\_\_ Signature: \_\_\_\_\_

Return form to: GreenStage • PO Box 9594 • Seattle, WA 98109

**DOUBLE YOUR GIFT!** Ask your employer about corporate matching!

GreenStage is a 501(c)3 non-profit organization qualified to accept tax-deductible donations.

Donation Amount:

- ☐ \$300  
☐ \$150  
☐ \$50  
☐ \$25  
☐ Other \$ \_\_\_\_\_

How would you like to be listed in our programs?

- ☐ Use the name above  
☐ Use this name: \_\_\_\_\_

☐ I prefer to remain anonymous



## CONTRIBUTORS - DONATIONS RECEIVED BETWEEN 5/1/2008 AND 6/22/2009

GreenStage would like to thank the following individuals and organizations for their support during the past year. Without contributions such as these, we simply could not do what we do. Thank you.

### \$3000 and over

4Culture  
KUOW 94.9 FM  
Seattle Parks and Recreation

### \$1000 - \$2999

In Memory of Bill and Jackie Taylor

### \$300 - \$999

Kelley's Personal Communications  
Mayor's Office of Arts & Cultural Affairs  
Microsoft Matching Gifts Program  
Starbucks Matching Gifts  
Massy and Sally Anaya  
Peter Burford and Alice Sieger  
Lauren Dudley  
Jack Holtman  
Robin and Mark Whipple

### \$150 - \$299

Adobe Matching Gifts Program  
The Copper Corner  
Sharon Angle  
Mike and Maggie De Laurentis  
Dennis Glavin  
Chris and Cindy Klassen  
Iain M. Robertson and Hady Dejong  
Dave Schmitt and Anne Hellman  
Julie and Sam Smith  
Jerry Watt and Vreni Von Arx Watt  
Jerry and Karen White

### \$50-\$149

Anonymous (8)  
AON Foundation

Boeing Gift Matching  
The UPS Foundation  
Joseph Barredo and his parents  
John Bradshaw  
Rod Cameron and Heather Howard  
Mary Cannon  
James and Janet Carson  
Dreanna Day  
Gretchen Day  
Jeanne DeBaets and Kip Kolodziejski  
Michelle Downey-Magee and Dail Magee Jr. Dail  
Kathy Dugaw  
Donna Finke  
Kim and Eric Friedli  
David Friedt and Marilyn Brockman  
John Fugate and Tony Earl  
Samara Hoag  
Ken and Lisa Holmes  
Sharelle Howard  
David and Lisa Kassens  
Howard Langeveld  
Mark Levinson  
Cynthia Marino  
Maria Meredith  
Lisa Michelbrink and Rickey King  
The Micheletti Family  
Thomas Morris  
Sue Moser and Scott Seramur  
Meg Pageler Mourning and David Mourning  
Meg Olsen  
Loretta Pirozzi  
Dan Portman  
Grace Reamer and Kevin Boze  
Debra Revere  
Eric and Karen Richter  
Anne Sakrison

Adam and Catherine Schaeffer  
Bobbie Simone  
Ron Simons and Mary Lynn Buss  
Robby Stern  
Theater Lovers in West Seattle  
Suzanne and Nathan Way  
Linda and Michael Warren  
LaVerne Woods and John Zobel  
Richard Wurdack

### \$10-\$49

Anonymous (6)  
Stacia Beer  
George Boswell  
Michael Carroll  
Julie Enevoldsen  
Waverly Fitzgerald  
Laura Garcia  
Raven Skye Hughes  
Craig Kramer  
James Krieger  
Nancy Lee  
Mary Metastasio  
Anne Moses  
Walter and Lida Roubik  
Paula Russell and John Dick  
Eric and Tera Schreiber  
Charlotte Terhune  
Wendina M. Ubaghs  
Richard and Vanetta Warren  
Neva and Allan Welch  
Clem and Monica Zipp

This list represents gifts received between 5/1/2008 and 6/22/09. GreenStage makes every effort to insure that the donor list published in our program is accurate. If your listing is incorrect or missing, please contact us at [greenstage@greenstage.org](mailto:greenstage@greenstage.org), or you can leave a message for us at 206-748-1551. Thank you.



**Redwood Theatre**  
Bringing theatre to  
the Eastside since 1983

2009 Redmond Arts Award  
for Service to the Community

<http://redwoodtheatre.org>

October 9-24, 2009  
**Thunderbolts & Dunderheads**  
(Washington State Premiere)  
by Todd McGinnis

February 12-27, 2010  
TBA

April 23-May 8, 2010  
**A ... My Name Will Always Be Alice**  
conceived by Joan Micklin Silver  
and Julianne Boyd



Katherine Williams and Mok Moser in *Illyria*. Photo by Michael Brunk.

# GreenStage 2009 Summer Performance Schedule



**BIKE & THE BARD!**  
Turn transportation into recreation  
No parking hassles  
The green way to GreenStage

*bicycle club*  
**Cascade**

Bike routes and information are available at [www.cascade.org](http://www.cascade.org)

SUN	MON	TUE	WED	THU	FRI	SAT
<b>JULY 10 – AUGUST 15, 2009</b> <a href="http://www.greenstage.org/sotf">www.greenstage.org/sotf</a>					<b>10</b> King John - 7pm Volunteer Park <b>Comedy - 7pm</b> Fall City Park	<b>11</b> King John - 7pm Seward Park <b>Comedy - 7pm</b> Volunteer Park
<b>12</b> King John - 2pm Volunteer Park <b>Comedy - 7pm</b> Seward Park	<b>13</b>	<b>14</b>	<b>15</b>	<b>16</b> <b>Comedy - 7pm</b> Lower Woodland Park	<b>17</b> King John - 7pm Lower Woodland Park	<b>18</b> King John - 3pm <b>Comedy - 7pm</b> Lower Woodland Park
<b>19</b> <b>Comedy - 3pm</b> Lincoln Park	<b>20</b>	<b>21</b>	<b>22</b>	<b>23</b>	<b>24</b> King John - 7pm Camp Long <b>Comedy - 7pm</b> Redmond City Hall	<b>25</b> <b>Comedy - 7pm</b> Camp Long King John - 7pm Dottie Harper Park
<b>26</b> <b>Comedy - 3pm</b> Discovery Park King John - 3pm Lincoln Park	<b>27</b>	<b>28</b>	<b>29</b>	<b>30</b> King John - 7pm Lynnndale Park	<b>31</b> <b>Comedy - 7pm</b> Lincoln Park	<b>AUGUST 2009 ↓</b> <b>1</b> King John - 3pm Lincoln Park <b>Comedy - 7pm</b> Dottie Harper Park
<b>AUGUST 2009 ↓</b>						
<b>2</b> King John - 3pm Discovery Park <b>Comedy - 3pm</b> Lincoln Park	<b>3</b>	<b>4</b>	<b>5</b>	<b>6</b> <b>Comedy - 7pm</b> Lynnndale Park King John - 7pm Magnuson Park	<b>7</b> <b>Comedy - 7pm</b> Volunteer Park King John - 7pm Fall City Park	<b>8</b> King John - 3pm <b>Comedy - 7pm</b> Magnuson Park
<b>9</b> <b>Comedy - 3pm</b> King John - 7pm Magnuson Park	<b>10</b>	<b>11</b>	<b>12</b>	<b>13</b> King John - 7pm Volunteer Park	<b>14</b> <b>Comedy - 7pm</b> Volunteer Park	<b>15</b> <b>Comedy - 3pm</b> King John - 7pm Volunteer Park

this fall

**GREENSTAGE**

presents a

**HARD BARD**

production

the most lamentable roman tragedy of

**TITUS ANDRONICUS** directed by TONY DRISCOLL

Oct 2009 - indoors, location to be announced

This fall we bring you a blast from our past. Tony Driscoll's 1995, over the top, comedic, and extra bloody production of *Titus Andronicus* was a special Halloween treat that deserves resurrection.

Recognized as Shakespeare's bloodiest tragedy, *Titus Andronicus* tells the story of the great military leader Titus. After battle he returns a hero to a divided Rome, with his Goth prisoners in tow. The Emperor has died and Titus is given the honor of deciding which of the Emperor's sons should take control. Needless to say, he chooses poorly and sets in motion a series of events that propel him and his family into a whirlwind of murder, dismemberment, banishment, general sadness, and of course, a heaping helping of righteous revenge.

Several of your favorite GreenStage actors are already preparing to get down and dirty (not to mention bloody) to bring you a delerious night of Shakespearean fright. WARNING... the front row of the audience may be a splash zone.

At right is the original show poster, which came complete with its very own Parental Warning label. Will there still be an evil party clown roaming the streets of Rome? You'll have to wait and see.

