

2016



28th Season!  
greenstage.org

# SHAKESPEARE IN THE PARK

Seattle • Burien • Fall City • Lynnwood • Maple Valley • Normandy Park

July 8 - August 13, 2016



**CYMBELINE**

directed by Vince Brady

**THE MERRY WIVES  
OF WINDSOR**

directed by Daniel Wood



**BACKYARD BARD**

**TWELFTH NIGHT AND PERICLES**

directed by Ken Holmes

SPONSORS



MEDIA SPONSOR



greenstage.org

**T22** | Presents  
theatre twenty-two

Alexi Kaye Campbell's

# The Pride

Betrayal. Forgiveness. Fate.

Directed by Corey D. McDaniel



Tickets and More Info at [www.theatre22.org](http://www.theatre22.org) - All Thursdays are PWYC at the Door

October 28th - November 19th at 8pm

12th Ave Arts 1620 12th Avenue

Seattle Gay News

Shunpike

12 AVE ARTS

Green Stage

Green World

Green Medicine



23andMe

## Natural DNA Solutions

Genetic Health Reports and Treatments

We take your 23andme genetic report  
and turn it into a 150+ page lifestyle  
guide for optimizing your health.

**Tom Ballard, RN, ND**

Author of *Nutrition-1-2-3*

As you like it for 33 years

[www.NaturalDNASolutions.com](http://www.NaturalDNASolutions.com)

# WELCOME!

Seattle's **SHAKESPEARE** in the **PARK** Company

28 years of free theatre!



## New Beginnings and Fond Farewells

When I first became involved with GreenStage, way back in 1993, we were just a rag-tag group of misfit actors wanting to tell stories in the open air. We had no idea how to run a theatre company, only the desire to explore the works of Shakespeare and to share these stories with whoever wanted to join us on the grass.

Since those humble beginnings, this company has grown by leaps and bounds. We've done new works, explored American classics, and bloodied up multiple stages with our Hard Bard tragedies. In 2014 we joined a small handful of companies that have produced every play in Shakespeare's Canon. We developed the Seattle Outdoor Theater Festival, and are bringing our smaller Backyard Bard productions to new audiences and neighborhood parks around Seattle.

I'm thrilled to have played a part - or more accurately, parts - both on stage and off, in building GreenStage into what it is today. Now, after twenty-three years, it's time to hand off the Managing Director magic wand to someone new.

I'm so proud of this company, our history, the work that we do, and my contribution to its success, but now it's time for some fresh blood to take GreenStage to the next level. Our staff and board are committed to the continuing success of this little band of misfits, and in continuing to tell these great stories. For me, I'm hoping to be seeing you from the stage in the very near future.

Thank you for being here today. And to those that have been longtime fans, thank you for coming back again and again.

Enjoy the show.

— Ken Holmes, Managing Director

## Youth Summer Camps for kids ages 5-18 July 11-August 12

**Queen Anne Community Center • Volunteer Park  
Magnuson Park Community Center • High Point Commons**

Kids take a week-long journey into the world of Shakespeare and theatre as they delve into one of the Bard's best plays! Great for aspiring actors.

All levels of experience are welcome!

[GreenStage.org/camp](http://GreenStage.org/camp)

**DO IT THE BARD WAY!**



## Donate to GreenStage!

Scan this code with your smartphone and donate from the comfort of your picnic blanket. Help keep Shakespeare in the Park FREE!

## How much to give? →

We'll leave that up to you. Whether it's a few bucks in the hat at the end of the show, or a big check with lots of zeros! Consider the cost of going to the movies, a play at an indoor theatre, or a concert. At right is a list of some of our expenses in case you want to sponsor something specific.

## Where the money goes

Running a theater company can get expensive! Here's a partial list of our annual expenses.

### Annual Company Expenses (approximate)

People - actors, production team, and permanent staff: \$55,000

Production Expenses - costumes, props, sets, etc: \$14,000

Marketing - programs, flyers, mailings: \$15,000

Storage Rent - home for costumes and props: \$8,000

Administrative costs to keep the company running: \$5,000

Please consider giving today. Your donations insure that our programs will continue to bring free theater to Seattle area residents and visitors for years to come.





Gavin Sakae McLean, Jennifer Crooks, Tyloer Dobies, and Laura Lee Caudill. Photo by Ken Holmes

## TWELFTH NIGHT and PERICLES

Directed by Ken Holmes

**CAST** – in alphabetical order

### Jennifer Crooks

**Twelfth Night** ..... Valentine, Olivia, Antonio  
**Pericles**..... Antiochus' Daughter, Helicanus, Dionya,  
a Fisherman, Thaisa, a Pirate, Bawd, Diana

### Laura Lee Caudill

**Twelfth Night** ..... Viola  
**Pericles**..... Thaliard, a Fisherman, Escanes, Lychorida, Marina

### Tyler Dobies

**Twelfth Night** ..... Captian, Andrew, Sebastian, Officer  
**Pericles**..... Pericles, Boulton, a Pirate

### Gavin Sakae McLean

**Twelfth Night** ..... Orsino, Toby Belch, Malvolio  
**Pericles**..... Antiochus, Cleon, a Fisherman, Simonides,  
Cerimon, Leonine, Lysimachus

### PRODUCTION TEAM

Ben Driskell ..... Stage Manager  
Rex Kesner ..... Costume Designer  
Gail Wamba ..... Prop Designer

## ABOUT BACKYARD BARD

Four actors perform a total of over thirty roles in these two plays, and each play is cut down to under one hour.

Backyard Bard was born when GreenStage was asked to perform at a backyard party. With our main shows being too big for the space, we created *Tiny Twelfth Night*, which we are reviving for this summer's tour.

Now in its fourth year as a regular part of our summer season, Backyard Bard is a perfect fast-paced, fly-by-the-seat-of-your-pants, abridged introduction to Shakespeare, meant for audiences young and old.

## ABOUT THE PLAYS

### TWELFTH NIGHT

In Illyria, Duke Orsino is lovesick for Countess Olivia, but Olivia is not at all interested; her thoughts are consumed with grief over the death of her brother.

Off the coast of Illyria, a shipwreck separates Viola from her twin brother Sebastian, and strands her in a strange land. Fearing her brother dead, she disguises herself as a boy in order to find work serving Orsino - whom she takes an immediate liking to. Unable to disclose that she is a woman, her love goes unrequited. Instead, Orsino sends her to deliver his messages of love to Olivia.

When Viola arrives at Olivia's, the countess is awakened from her grieving and falls in love with the messenger boy.

And then Viola's twin brother Sebastian, rescued from the shipwreck by Antonio, arrives in Illyria. A masterful comedy of mistaken identities, music, love, and silliness ensues.

### PERICLES

Prince Pericles of Tyre takes a trip to Antioch is hopes of marrying King Antiochus' daughter, but what he discovers there sets him on an epic journey to escape the evil king's wrath.

Shipwrecked and washed ashore in Pentapolis, Pericles hears from some fishermen of an upcoming tourney to win the hand of Thaisa, the daughter of the good King Simonides. Not being one to turn down such an opportunity, Pericles joins with several other knights (maybe you?) to show his skill... and of course win both the tourney and the hand of Thaisa.

News arrives announcing that Antiochus and his daughter have died, and that Pericles must to return home to deal with political upheaval. Taking Thaisa - now pregnant - with him, his ship hits rough seas. Thaisa delivers the baby, but dies in childbirth. With no means of raising a child on his own, Pericles leaves the baby, named Marina, to be raised by Cleon and Dionya in Tarsus.

What cruel tricks does the future have in store for Marina? Is Thaisa really dead? Will Pericles ever be happy again? Those questions and more will be answered in just under an hour.



Erin Day, Paul Shapiro, and Nicole Vernon. Photo by Ken Holmes



John Bergeron, Katherine Jett, Eric Hampton, and Warren Haney. Photo by Ken Holmes

## THE MERRY WIVES OF WINDSOR

Directed by Daniel Wood

### CAST – in alphabetical order

Jeremy Adams .....	Doctor Caius
Erin Day .....	Mistress Page
Charles Ivan Gift .....	Sir Hugh
Natalie Gress .....	Anne Page
Xander Hammond.....	Simple
Eric Hartley.....	Master Page
Jared Holloway-Thomas .....	Slender
Joshua Lamb .....	Pistol
Chris MacDonald.....	Master Ford
Abby Nathan .....	Nym
Helen Roundhill .....	Fenton
Paul Shapiro .....	Sir John Falstaff
Jessica Stepka.....	Mistress Quickly
Sean Patrick Taylor .....	Shallow
Nicole Vernon.....	Mistress Ford

### PRODUCTION TEAM

Lisa Harrington .....	Stage Manager
Julia Evanovich .....	Costume Designer

## CYMBELINE

Directed by Vince Brady

### CAST – in alphabetical order

Meredith Armstrong.....	Caius Lucius/Philario
John Bergeron .....	Iachimo
Nazlah Black .....	Arviragus
Sally Brady.....	Queen
Sam Hagen .....	Pisanio
Eric Hampton.....	Posthumus Leonatus
Warren Haney.....	Cloten
Sophie Hanks.....	Lady/Ensemble
Katherine Jett.....	Imogen
Daniel Lacker.....	Second Lord/Ensemble
Garrett Lander .....	Guiderius
Helen Martin .....	First Lord/Ensemble
Mary Murfin-Bayley .....	Belarius
Daniel Sarfati.....	Cornelius/Ensemble
Gianni Truzzi.....	Cymbeline

Natalie Gress.....	Technical Director / Set Designer
Gail Wamba.....	Prop Designer
Ryan Spickard .....	Fight Choreographer
Laura Tompson.....	Costume Intern
Emma Hagerman .....	Asstant Stage Manager
Erin Mettling .....	House Manager
Sophie Hanks and Xander Hammond .....	Apprentices

### SPECIAL THANKS

Paul Budraitis • Devlin Donnelly • Tony Driscoll • Lisa Holmes • Julianna Ross • Savage Color  
S.P.A.C.E. • Seattle Parks and Recreation • Randy Wiger





Daniel Wood as Don Armado in *Love's Labour's Lost* - 2014

## THE MERRY WIVES OF WINDSOR

**With *The Merry Wives of Windsor***, Shakespeare has written a play that delights in the excesses of life. Appropriate then that its central character, the merry knight Sir John Falstaff, perhaps The Bard's most famously endearing comic character, finds himself at the heart of this laugh-out-loud domestic farce.

The comedy of the play, like the fat knight Falstaff—whose appetites for wine, women and song are insatiable—is also larger than life. The denizens of Windsor are a broad collection of comic misfits, their passions run hot and the situations they find themselves in are increasingly ridiculous but just as easily as they dust up their drama so too are they quick to forgive and forget. Even in the fray our cast of characters find joy in the drama and a love of life.

We have had a merry time creating this play for you. It is certainly my hope you find merriment in it. May your summer be as jolly as the fat knight Sir John Falstaff and the citizens of Windsor he finds himself with.

— Daniel Wood



Ken Holmes as Prospero in *The Tempest* - 2011

## BACKYARD BARD

### Shipwrecks and seafarers

are common themes in both of this summer's Backyard Bard plays. In *Twelfth Night*, a tragic shipwreck separates twin siblings, who each thinking the other is dead, strive to find a new life in Illyria. In *Pericles*, a shipwreck thrusts our hero, bereft of all his belongings, into a land where he discovers his true love, and then loses her in childbirth during a storm at sea, leaves the baby with

friends who can give it proper nursing, and finds out years later that she has supposedly died. In both plays, the separated families are eventually reunited, but only after much travail...and/or silly mistaken identities.

For these shortened productions we've had to do a little trimming to get them to under an hour. In *Twelfth Night*, you may notice that Feste is missing, and Malvolio makes only a cameo. If those were your favorite characters, I apologize, but hope that focusing on Viola's story will be an enjoyable entertainment.

Cutting *Pericles* was a more difficult task. Distilling the main storyline of this epic journey out of the large number of scenes, locations, and characters took a bit of work. And I'm beholden to my cast of actors that helped find the through line.

I hope you enjoy these stories as much as we have, even if some of your favorite characters and scenes have walked the plank.

— Ken Holmes



Vince Brady as *King Lear* - 2013

## CYMBELINE

***Cymbeline* is a story about** the existence of redemption and the power of forgiveness. It's a hopeful tale and a tall one. When writing this play, Shakespeare was experimenting with a new style. I believe that one of the reasons for the play's lack of popularity over the years is because it has proved difficult to classify. Some have called it a tragedy gone right.

Actually Polonius, in *Hamlet*, came up with the ideal description of this play with the phrase "tragical-comical-historical-pastoral". Listed in the First Folio as a tragedy, *Cymbeline* does not conform to the standard requirements of a tragedy, yet it has many tragic elements. It also borrows heavily from legends and history, has a pastoral setting with princes growing up in a cave in Wales and concludes like a comedy with a reconciliation scene to end all reconciliation scenes!

This is Shakespeare in the twilight of his life, plucking elements from his previous masterpieces and blending them together into a story that is bursting at the seams with plot. It is the work of a genius at the height of his powers, who has nothing more to prove and is challenging himself to invent new boundaries of style and invention. I believe this invention stretches even to the title of the play. At first glance it seems strange that the titular character of *Cymbeline* is not the main protagonist. In fact Imogen, Posthumus, Iachimo and Belarius are all larger roles and indeed until the final scene of the play all of the other main characters have more to say than *Cymbeline*. This is also the only time that Shakespeare apparently names a play after a king and does not use that word in the title (as with *King Lear*, *King John* and the kings in all the histories). I believe that this is because Shakespeare means *Cymbeline* not to refer to the specific character of King *Cymbeline*, but to refer to the entire world that exists in the play.

This world has its own logic, a Cymbelinian logic if you like.

It is a world that contains characters and situations that dare us not to believe. In it we see Shakespeare's imagination at its wildest, and the language is some of his more sophisticated. It is at once a fairytale world, a fantasy world, a rustic world, a political world and a romantic world. It has kings, queens, princesses, evil villains, lost family members, battles and journeys to lands far, far away from home. At the heart of all the commotion we find real people who must reach into the strongest parts of themselves in order to survive.

*Cymbeline* asks us to reconsider what we believe to be true. It suggests that you must lose yourself in order to find yourself. On behalf of the cast and everyone involved with this production, let me invite you to sit back, relax and lose yourself in a place called *Cymbeline*.

— Vince Brady

**SIMPLE SUMMARIES OF THE SUMMER SHOWS**

Nicole Vernon, Paul Shapiro, and Erin Day. Photo by Ken Holmes

**THE MERRY WIVES OF WINDSOR**

Sir John Falstaff arrives in Windsor somewhat short on cash, and decides his best remedy for the situation is to woo a rich woman. His top prospects are Mistress Ford and Mistress Page, and the fact that each is already married does not deter his plans. Falstaff sets about courting the married mistresses, sending identical letters to each.

The merry wives quickly figure out Falstaff's game, and while they're not at all interested in his advances, they see great potential for light-hearted revenge. The two lead Falstaff on in order to play a series of jokes and indignities on him. You've got to admire his pluck; he keeps at it even after the women stuff him in a hamper of filthy laundry and have him dumped into the River Thames.

Master Ford gets word from Falstaff's former cronies of the fat knight's advances on his wife. A very jealous man, Ford disguises himself as "Master Brooke" and pays Falstaff in a misguided attempt to test Mistress Ford's virtue.

Meanwhile, three suitors compete for the hand of Page's daughter, Anne. Master Page thinks Slender the best matrimonial option, Mistress Page favors Doctor Caius, and Master Fenton has been paying off Mistress Quickly to put in a good word for her to Anne.

Who will win Anne's affections? Who will get the last laugh and who will get what they deserve?



Eric Hampton, Katherine Jett, and Warren Haney. Photo by Ken Holmes

**CYMBELINE**

Imogen loves and marries Posthumus, a member of her father King Cymbeline's court. Cymbeline, however, wants his daughter to marry a man more royal, so he annuls the marriage and banishes Posthumus to Italy. Imogen's stepmother, the Queen, wants her own son, Cloten, to marry Imogen.

In Italy, Posthumus tells Iachimo of Imogen and their true love. Iachimo bets Posthumus that he can seduce the faithful Imogen, and bring back proof of her infidelity. She doesn't give in, but Iachimo collects just enough misinformation to convince Posthumus that he has succeeded.

Jealous Posthumus arranges to have his servant Pisanio kill Imogen. Instead, the servant helps her escape into the woods, disguised as a boy, where she takes refuge with Belarius and his two supposed sons.

Cloten follows Imogen into the forest and loses his head while dressed as Posthumus. The real Posthumus returns to England with the invading Roman army, fights on the British side, but is captured in his Roman clothes. Imogen, calling herself "Fidele" is taken as the Roman general Lucius' page. In the battle Cymbeline is rescued by Belarius and sons. When the dust settles from the battle, we finally get to see the web that connects all of our main characters.

The guilty fess up and the truth wins, but first there are many knots of clothing-based misconception, mistrusted sources, misdirection, misinterpretation, and missing siblings to untie.

**THE LAST DAYS OF**  
**JUDAS**  
**ISCARIOT**  
 A PLAY BY STEPHEN ADLY GURGIS  
 DIRECTED BY TERESA THUMAN  
**JULY 14 - 31**  
**CENTER THEATRE**  
 @ SEATTLE CENTER ARMORY  
**SOUND** theatre company  
 believe in the possibilities

"THE FUNNIEST SHOW ON THE PLANET!"  
**ONE MAN,**  
**TWO GUVNORS**  
 A COMEDY BY RICHARD BEAN  
 DIRECTED BY KEN MICHELS  
**AUGUST 11 - 27**  
**CENTER THEATRE**  
 @ SEATTLE CENTER ARMORY  
 www.SoundTheatreCompany.org



## THE MERRY WIVES OF WINDSOR CAST



### **Jeremy Adams (Doctor Caius)**

Jeremy has been performing all over the Seattle area and was last seen as Cyril in Schmeater's *Fatal Footlights* and Peter in ReAct's *Prelude to a Kiss*. He is honored to have been given the chance to play this enthusiastically eccentric pseudo-villain. He has been performing musicals for over nine years, and is currently delving into tumbling and weapon combat. He also enjoys being somewhat goofy onstage. Thank you for attending!



### **Erin Day (Mistress Page, GreenStage Artistic Director)**

Since moving from Washington D.C., she found a home in GreenStage and finds nothing grander than playing with them and with you. Around town, she has performed at Seattle Public Theater, Theatre Babylon, Seattle Fringe Festival, The Washingtonians! and others. She is currently a member of The Midnite Mystery Players and is honored to serve as Artistic Director for GreenStage. Thanks to her amazing family and especially to you. Enjoy the show!



### **Natalie Gress (Anne Page)**

Natalie is incredibly excited to be playing with GreenStage again this summer! Currently a student at Seattle Pacific University, she is studying Theatre and

English Literature. At her university, Natalie was last seen as Sally Talley in *Talley's Folly*, Ballet Girl in *Elephant's Graveyard*, and Cordelia in *King Lear*. Past favorites also include *Faeries of Stratford* (Susanna Shakespeare) with Kulcsar Theatricals, *Romeo and Juliet* (Juliet), *A Midsummer Night's Dream* (Titania), and GreenStage's *A Midsummer Night's Dream* (Snout). Natalie would like to thank her family and friends for the love and encouragement, and the audience for supporting outdoor theatre. Enjoy the show!



### **Eric Hartley (Master Page)**

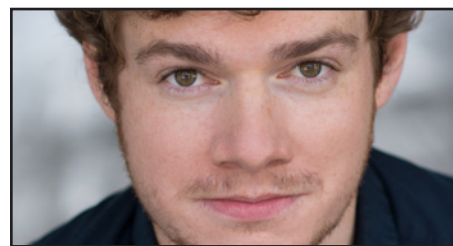
Eric last did outdoor Shakespeare in 2006 and hopes you'll be kind to him! Previous Shakespeare (indoors and out) includes Berowne in *Love's Labor's Lost*, Jacques in *As You Like It*, Nestor in *Troilus and Cressida*, Friar Laurence in *Romeo and Juliet*, Polonius in *Hamlet*, Camillo in *The Winter's Tale*, and Gonzalo in *The Tempest*. Most recently Eric appeared as Bromhead in *No Sex Please, We're British*, favorite past roles include Henry in *The Lion in Winter*, Tevye in *Fiddler on the Roof*, and Frank in *Educating Rita*. He is very pleased to FINALLY make his GreenStage debut. Go Mariners!



### **Jared Holloway-Thomas (Slender)**

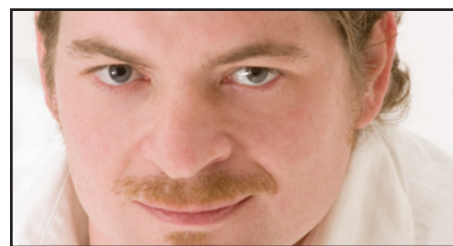
Jared is a classically trained actor and alien space invader. They are happy to be returning for another summer with GreenStage, appearing as Borraccio in *Much Ado About Nothing* last summer. Jared has also appeared in productions with Arouet and Seattle Immersive Theatre. In their free time Jared enjoys eating

nondairy ice cream and preparing puny humans for the inevitable invasion of Earth by the third fleet of the Xahghadun Star Empire.



### **Joshua Lamb (Pistol)**

Joshua is excited to make his GreenStage debut with *Merry Wives*. A recent Colorado transplant, he has appeared in a couple of productions in Seattle. His favorites include Second Story Repertory's production of *The Harvest*, Theater Schmeater's production of *The Epic of Gilgamesh* and most recently appeared in the Seattle Fringe Festival in the production of *The Worry Machine*. He would like to express his immense gratitude towards his loving family, supporting him and wishing him the best all the way from Colorado.



### **Charles Ivan Gift (Sir Hugh)**

Charles is excited to join the cast after taking a few years off. Charles attended Gonzaga University where he received a BA in Theater and English. After that he worked at The Lake City Playhouse and InterPlayers Theater, now known as the Modern Theaters in Spokane and Coeur d'Alene as actor, director and technical director, and then Coeur d'Alene Summer Theater as an actor and technician. Charles was last seen in GreenStage's *Henry VIII*. A few other notable past roles include Frog in *A Year with Frog and Toad*, the title role in *The Frog Prince*, the Woodsman in *Snow White*, and the Baker and a brother in *Joseph and His Amazing Technicolor Dreamcoat* all for SecondStory Rep. He has also worked as actor and technician for Seattle Musical Theater, ArtsWest,



## THE MERRY WIVES OF WINDSOR CAST (CONT.)

Phoenix Theater, and Seattle Opera. In his day job he enjoys working at Trader Joe's and being a Husband Dad to his three year old son Liam and amazing wife Meghan.



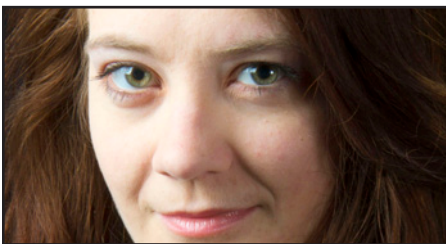
**Chris MacDonald (Master Ford)**

Chris is crazy happy to be working with GreenStage this summer. Past credits include roles at Theater Machine, Theater Schmeater, Wooden O, Seattle Shakespeare and BASH Theater (where he is a company member). He'd like to thank Jenn and the girls for their support.



**Abby Nathan (Nym)**

Abby is so excited to be back for another amazing summer with GreenStage! Abby graduated from Central Washington with her BFA in performance. Past performances include: Nurse in *Creature* (Theater Schmeater); Delio in *The Duchess of Malfi* (GreenStage Hard Bard); Conrade/Messenger in *Much Ado About Nothing* (GreenStage); Dr. Wink/Alison in *Pinkalicious* (SSR); and Caliban in *The Tempest* (Central). All of her love goes to Skye, Dustyn, Chauncey, and her parents.



**Helen Roundhill (Fenton)**

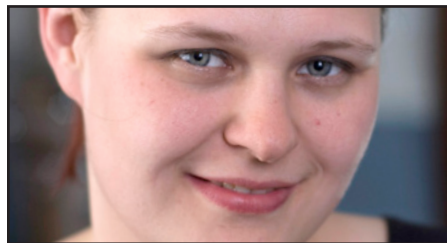
Helen is an actor and costume designer in Seattle with many aspirations. She is happy to be returning for a third summer

in the park with GreenStage. Previous park shows include *The Two Noble Kinsmen* (Jailer's Daughter), *All's Well That Ends Well* (Parolles/Diana), and *The Comedy of Errors* (Dromio/Dromio). Other favorite roles include *Psycho Beach Party* (Chicklet, Fantastic.Z ) *Reefer Madness* (Mae, Atlas Theatre Ensemble), *Rocky Horror* (Janet, Renton Civic Theatre), and *Hamlet* (Laertes, Ghost Light Theatricals). In her spare time she also appears as the Cabaret and Drag performer "IcyLondon IcyFrancis." She is ever grateful for the love and support of her friends and family and baffled at her good luck to be blessed with them.



**Paul Shapiro (Sir John Falstaff)**

Paul is delighted to be making a return to the stage after a hiatus raising his two terrific daughters. Paul is a former clown with Ringling Bros. Circus, retiring Arts Director at Seattle Academy, and winner of the Winifred Ward Award from the American Theater Association. Favorite roles include Lenny in *Of Mice and Men* at Westbeth Theater Center in Manhattan, Willie Stark in *All the King's Men* for the Montana Repertory Theater, Andrew Aguecheek in *Twelfth Night* for the Santa Fe Festival Theater, and Shylock in *Merchant of Venice* for Arne Zazlov's Bathhouse Theater in Seattle. Special thanks to my wonderful partner, Kristin.



**Jessica Stepka (Mistress Quickly)**

Jessica is pleased to be running around the parks this year! You may have previously seen her with GreenStage in *The Comedy of Errors*, *Hamlet*, and *The Two Gentlemen of Verona*. Most recently she performed at the Seattle Fringe Festival in *Mad Scientist*

*Cabaret* with a new company called DangerSwitch! Look for her this Fall in *Big Bad*, a frightening exploration of Little Red Riding Hood as told by clowns and winner of the 2016 Battle of the Bards at Ghost Light Theatricals.



**Sean Patrick Taylor (Shallow)**

This is Sean's second show with GreenStage, having appeared in *Love's Labors Lost* in 2014. Recent credits include *As You Like It*, *The Winter's Tale*, *The Merry Wives of Windsor*, and *Twelfth Night* with Seattle Shakespeare Company, and Telegin in Akropolis Performance Lab's production of *Uncle Vanya*. A scholar of language and literature, he provided the translations of *A Doll's House* and *Cyrano de Bergerac* for SSC, and teaches medieval and ancient literature at the Creative Retirement Institute, and through UW Extension.



**Nicole Vernon (Mistress Ford)**

Nicole can think of nowhere she would rather be than in this beautiful park telling this silly story with all of you wonderful people. Some favorite roles from ten years playing with GreenStage include the Duchess in *The Duchess of Malfi*, Regan in *King Lear*, Celia in *As You Like It*, Sabina in *The Skin of Our Teeth*, and Lady Macbeth et al. in last summer's Backyard Bard. With love to Erik, the Eclectic Cloggers, and everyone that supports, through time, talent, and donations, the Seattle theatre community.

## → CYMBELINE CAST →



### **John Bergeron (Iachimo)**

*Cymbeline* is John's first show with GreenStage. A long-time native of New Jersey and recent transplant to Seattle, his favorite regional roles include El Gallo in *The Fantasticks!*, Philo Farnsworth in *The Farnsworth Invention* and Laertes in *Hamlet* with Circle Players, NJ; Cliff Bradshaw in *Cabaret* and Marc Antony in *Julius Caesar* with ActorsNET of Bucks County, PA; and Sky Masterson in *Guys and Dolls*, William Barfée in *The 25th Annual Putnam County Spelling Bee* and Aaron Fox in *Curtains* with the Off-Broadstreet Theatre, NJ.



### **Nazlah Black (Arviragus)**

Nazlah's most recent acting credits include Evil Gabbi, the Narrator, and Faerrah in Tacoma Rep's production of *She Kills Monsters*. She's also portrayed Oya in Karen Hartman's new play *Gaza Rehearsal* and Princess in Alma Davenport's new play *(Miss)Fortune Has Green Eyes*. She has written and directed two one-act plays of her own. Her first, entitled *B.C.*, premiered at The Arches' On The Verge Festival in Glasgow, Scotland. Her second, *Strangers: Old and New*, opened at Raisbeck Performance Hall on January 21, 2016. She recently received her BFA in Theatre from Cornish College of the Arts in May 2016 and is very excited to be working with the *Cymbeline* cast on her first project outside of school.



### **Sally Brady (Queen)**

Sally is excited to be joining this GreenStage cast. She was last seen in *The Best Christmas Pageant Ever*, at Seattle Public Theater. Other roles include Mrs. Mortar in *The Children's Hour* for Arouet, Meg in *A Lie of the Mind*, for Kollektor at ACT, Mrs. Prentice in *What the Butler Saw* at Centerstage, and Lady Boyle in *Superior Donuts* at Seattle Public Theater. Originally from Kansas City, Sally studied at the University of Missouri at Kansas City, and The Drama Studio, London. Special thanks to Vince, Jack and Drew for encouragement and support.



### **Meredith Armstrong (Caius Lucius)**

Meredith has played boys and witches, princes and princesses, and Jacobean cougars for GreenStage. Now she's delighted to add Roman general to that eclectic list. Some of her favorite past GreenStage credits you might have seen are Goneril in *King Lear*, Duchess in *Hard Bard The Revenger's Tragedy*, and Katherine in *Henry V*. Past favorites with other companies include Phillippa in *Shoggoths on the Veldt* with The Rogues Gallery, Richard Henry Lee in *Reboot* Theatre Company's all-female *1776*, Hannah in *Arcadia* at Renton Civic Theatre, and Mercutio in the all-female *Romeo and Juliet* with Hose & Britches. She holds a BA in theatre from Western Washington University and completed post-graduate work with the National Shakespeare Conservatory in New York. Outside of acting, she's an author, aerialist, bellydancer, and baker. Love to Erik, Astrid, and Gunnar!



### **Sam Hagen (Pisanio)**

Sam has lived in Seattle for almost eleven years, and has enjoyed theater here in many ways. GreenStage is a favorite company of his and it is with great joy he joins this troupe for another summer. You are in good hands, and I hope you enjoy the show.



### **Eric Hampton (Posthumus Leonatus)**

Eric is thrilled to be making his first appearance at GreenStage! After receiving his BFA in theatre from Abilene Christian University, Eric returned to his native Seattle to pursue a career in theatre and voice acting. Having spent five years performing in Taproot Theatre Company's Christmas Touring and Road Company groups, Eric is a veteran of touring theatre in Seattle. Favorite past roles include Richard in *The Lion in Winter* at SecondStory Repertory and Prince Hal in *Henry IV Part 1* at ACU. He thanks his wife Melanie and three year old daughter Rowen for their constant love and inspiration.



### **Warren Haney (Cloten)**

Warren is beyond excited to be telling this fantastic tale and making his GreenStage debut! Warren's passion for the theater began when he was eight years old, and



## CYMBELINE CAST (CONT.)

since then his love and curiosity has only deepened. Later this summer he will be playing Frederic in *The Pirates of Penzance* with The Core Ensemble, a theater company in which he is co-founder. In the fall Warren will be finishing up his last semester at Cornish College of the Arts. Huzzah! Many thanks to his theater community, (you know who you are) who constantly challenge him to do the best work possible. A HUGE thank you to Momma & Papa Haney, for without their endless support he would not be the artist he is today.



**Katherine Jett (Imogen)**

Katherine is delighted to be back with GreenStage this summer in *Cymbeline*. She was last seen in the parks as Rosaline in their 2014 production of *Love's Labour's Lost*. She spent the first half of this year in Seattle Immersive Theatre's theatrical environment as Juliet in their production of *Romeo and Juliet*, and supernatural chanteuse Flora Keller, in *The Place Between*. Other Seattle credits include Mairi in *For All That* and the Wicked Fairy in *Sleeping Beauty* at Centerstage, Sonia in *Godspell* at Taproot Theatre, and Halina in *Starling* with Confrontational Theatre. Also a playwright, Katherine's original family-friendly musical about Bigfoot, *Squatch! The Musical*, will premier at Centerstage Theatre in the Spring of 2017.



**Daniel Lacker (Ensemble)**

Danny is thrilled to be making his GreenStage debut! Past credits include: Motel in *Fiddler on the Roof* with Snoqualmie Falls Forest Theatre, Jacob Marley in *A Christmas Carol* at Western

Washington University, and Melchior in *Spring Awakening* at Bellevue College. He received a BA in Theatre Arts from Western Washington University, and is excited to come home and work in Seattle. Thank you for coming and supporting our work!



**Garrett Lander (Guilderius)**

Fresh-faced and doey-eyed Garrett is honored and excited to be joining GreenStage for his first professional show! A very recent graduate of Western Washington University (commuting to rehearsal during finals week—Phew!), Garrett is grateful to all of his professors at WWU, especially Rich Brown for teaching him to fill any space with his voice and body (even the outdoors!), Evan Mueller for teaching him the beauty of Shakespeare's language, and Jim Lortz for teaching him to be fully present as an actor. Garrett would also like to give a special shout-out to his parents for continuing to love, support, and silence their doubts as their son continues to make his dreams a reality.



**Helen Martin (Ensemble)**

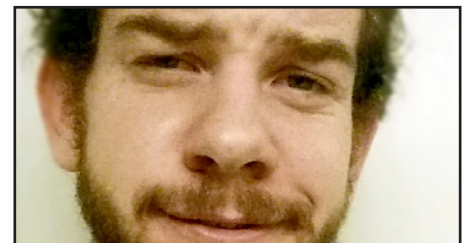
Helen grew up in Western Australia, where she studied theatre at Murdoch University. She has appeared on Australian stages in roles such as Feste in *Twelfth Night* and Q in *Metamorphoses*. She toured Southeast Asia as a dancing duck in a children's theatre production, *The Phoenix and the Fighting Pandas of Yunnan*. In 2010 she moved to the United States and has appeared in roles such as Leeann in *A Piece of my Heart*, Carrie in *Costly Desires* and the Narrator in *Joseph and the Amazing Technicolor Dreamcoat*.

She is also a postpartum doula, wife and "mummy" to two kids. She is thrilled to be joining GreenStage's 2016 season of Shakespeare in the Park!



**Mary Murfin-Bayley (Belarius)**

Mary is thrilled to be with GreenStage and can't imagine a better way to spend the summer than outdoors playing Shakespeare. Favorite recent roles include Gertrude in *Hamlet* with Last Leaf Productions, Claire in *Delicate Balance* with Theatre 9/12, Mrs. Tilford in *Children's Hour* with Arouet, and Ape in *Precious Little* with Annex. She has also enjoyed performing with Azeotrope, Seattle Public Theatre, Book-it, and Actors Theatre of Orcas Island, among many others. Her TV and film roles include Michael's Cross' "Second Nature", NBC's "Grimm", and Julio Ramirez's "Nothing Against Life." Mary has a BA in theatre from Reed College and studied Commedia with Roberto Andrioli at Teatro Cestello. She is SAFDA certified in four weapons.



**Daniel Sarfati (Ensemble)**

Journeyman, shaman, outlaw... Daniel is none of these things. But he does have a flair for the dramatic, which explains why you'll see him engaging in acts of theater tonight. *Cymbeline* will be Daniel's second Shakespeare production for the year, and it also marks the second production of anything that he has performed in ever. He hopes that your day has been good so far, and that it will get even better as you settle in (or continue to be settled in) for the show. He also thinks you're pretty cool.

## CYMBELINE CAST (CONT.)



### Gianni Truzzi (Cymbeline)

This is Gianni's fourth romp in the parks with GreenStage, where he was last seen as Gloucester in *King Lear*. In Seattle, he has performed with Sound Theatre Company (*The Illusion*, *Dogg's Hamlet*, *Cahoot's Macbeth*), Centerstage (*Death on the Supermarket Shelf*), Seattle Public Theatre (*Arcadia*), Stone Soup (*5xTenn*, *God of Hell*) and Macha Monkey (*Buckshot*) among many others. He has directed for Sound Theatre Company (*Disco Pigs*, *Blood Relations*), and for Driftwood Players (*Seven Keys to Baldpate*). Thanks to his patient wife Zeila for putting up with his summertime shenanigans.

## BACKYARD BARD CAST



### Jennifer Crooks

Jennifer is thrilled to be playing with GreenStage again this summer after having blast in last year's production of *Much Ado About Nothing* as Beatrice. She was most recently seen in The Rogues Theatre Gallery inaugural production of *Shoggoths on the Veldt* directed by fellow GreenStager Daniel Wood. Locally, she has worked with Bainbridge Performing Arts Shakespeare Society, ReAct Theatre, and Ghost Light Theatricals. She has created a number of original shows including: *The Juliet Project*, *Iconicity*, *Twisted*, and *Flora/Dora*. Favorite roles include Evelyn in *The Shape of Things*, Viola and Olivia in *Twelfth Night*, Lavinia in *Titus Andronicus*, and Tracy Lord in *The Philadelphia Story*. Many thanks to the best hubman a girl could ask for and to her family for all of their support from coast to coast.



### Laura Lee Caudill

Growing up in the greater Seattle area, Laura Lee was active in community theatre from a young age. She moved to Los Angeles to attend the School of Dramatic Arts at the University of Southern California where she performed in several school productions and had a guest starring role on a student run television show for three seasons. After graduating she became a company member with The Vagrancy Theatre Company where she performed in readings of new works, a 24-hour play festival, and their Ovation Award nominated main stage show *What of the Night* by Maria Irene Fornes. Upon completing an acting apprenticeship at A Noise Within in Pasadena, she returned to Seattle to continue to grow professionally as a stage and film actor.



### Tyler Dobies

Tyler Dobies is a recent graduate of Pacific Lutheran University, earning his Bachelor of Fine Arts in Acting/Directing. While at Pacific Lutheran University, Tyler appeared as The Wolf in *Into the Woods*, Katurian in *The Pillowman*, Othello/Mercutio/Ghost in *Good Night Desdemona (Good Morning Juliet)*, and The Head Waiter in *She Loves Me*, among others. Tyler has also been involved in *Evita*, *Seussical the Musical*, *Oliver*, and *Chitty Chitty Bang Bang* at Tacoma Musical Playhouse. This is his first gig out of college, and he couldn't be more excited. Thanks to Ken and to GreenStage for everything.



### Gavin Sakae McLean

Gavin is a 2008 Graduate of Cornish College of the arts with and emphasis in Performing Arts and has been a member of the Washington Performing community since then with his professional debut in the Seattle Shakespeare's touring cast from 2007–2011. His most notable performances include Lenny from Eclectic theater's production of *Of Mice and Men* in 2014 and the part of Bear in *The Rez: as I Saw It* in which McLean was awarded the 2009 footlight award for best actor in a fringe play. Gavin also practices theater as a fight choreographer and dialect coach for such theater companies as; Driftwood players, Seattle Shakespeare Company, Burien Actors Theater, and Eclectic Theater Company. "I've been looking forward to working with GreenStage and its collection of talent. With a total of 12 distinct characters, this could be my greatest challenge yet."

## Get Involved

If you love Shakespeare in the Park, consider helping us out by joining our board of directors or volunteering at a show. Join our dedicated and fun-loving team that makes FREE Shakespeare happen.

Contact us at  
[greenstage@greenstage.org](mailto:greenstage@greenstage.org).



## PRODUCTION TEAM

### Vince Brady

#### Director - Cymbeline

Vince is thrilled to be working with GreenStage again. He has worked with them as both an actor (*King Lear*, *Hamlet*) and as a director (*Love's Labour's Lost*) and always has a great time. He was born in Liverpool, England and worked as an actor and director in the U.K. and Europe before settling in the Pacific Northwest. While in England he studied with Barbara Houseman (RSC and Shakespeare's Globe) and Patrick Tucker (RSC, Original Shakespeare Company and Shakespeare's Globe). Since moving to Seattle he has had the pleasure of working with many wonderful organizations including Seattle Shakespeare Company, Wooden O, Harlequin, Village Theater, SecondStory Rep and Centerstage. He also spent five years as Artistic Director of Exchange Theatre. Vince would like to thank everyone involved with the show for their help in bringing this vision of *Cymbeline* so vividly to life. Special thanks to his wife, Sally, and his two sons, Jack and Drew, for allowing him out of the house.

### Sarah Ross

#### Stage Manager - Cymbeline

Sarah is delighted to be back working with GreenStage for a third summer. She couldn't ask for a better cast and production team. Recent stage management credits include *Annapurna* with Theatre22, *Arcadia* with Lakewood Playhouse, and *For All That* with CenterStage Theatre.

### Daniel Wood

#### Director - Merry Wives

Daniel is always happy to be working with GreenStage, here returning for his fifth summer in a row, but is doubly excited to be making his GreenStage directorial debut. GreenStage audiences may recognize him as Don Armado in *Love's Labour's Lost*, Stephano in *The Tempest*, Edgar in *King Lear*, Don Pedro in *Much Ado About Nothing* or Buckingham in *Henry VIII*. His most recent director credits include *The Children's Hour* for Arouet and *SHOGGOTHS ON THE VELDT* a *Cthulhu* Adventure Comedy for his geek themed theater company The Rogues Gallery. In addition to that, his most recent acting credits include the title role in *The Nerd* at Mount Baker Theatre and Bob in *Caught*

at Seattle Public Theater. Much love to his beautiful and talented wife Julia Evanovich.

### Lisa Harrington

#### Stage Manager - Merry Wives

Lisa is downright mirthful to be stage managing for GreenStage again this summer, and to traverse the parks of Seattle and beyond once more with such a fantastic company. She graduated from Pacific Lutheran University in May 2013 with a BFA in Theatre Technology and Design. Her previous GreenStage credits include *Hard Bard: The Duchess of Malfi*, *Backyard Bard* 2014 and *Backyard Bard* 2015. Many thanks to M and D for their support, and to the most excellent cast and crew for the adventure we're on.

### Ken Holmes

#### Director - Backyard Bard, Managing Director

Ken has been playing with GreenStage since 1993, wearing a variety of hats both onstage and off. He's also worked with several other theaters around town. Ken works in marketing and also freelances as a graphic designer and photographer. Thanks for coming to the show!

### Ben Driskell

#### Stage Manager - Backyard Bard

Ben has been working in theater for five years. He enjoys long walks on the beach.

### Elizabeth Power

#### Costume Designer - Cymbeline

Elizabeth is pleased to return to GreenStage and hopes you enjoy your evening with this wonderfully talented group of artists! This is her sixth show designing for GreenStage and it is always challenging and fun to be part of such a warm and loving family. Special thanks to Alex and Laura for keeping everything on track and organized! Favorite shows include *King Lear*, *Much Ado About Nothing*, *Addams Family*, *Young Frankenstein*, *Importance of Being Ernest*, *King and I*, *The Nerd*, and *The Boyfriend*.

### Julia Evanovich

#### Costume Designer - Merry Wives

Julia is a Seattle-based costume designer, seamstress, and painter. She is pleased and proud to be collaborating on this production of *Merry Wives of Windsor* with GreenStage. Some past productions include *Attack of the Killer Murder of Death*, *The Secretaries*, *Fallen Angels* and

*The American Pilot* (Theater Schmeater); *Macbeth* and *Two Gentlemen of Verona*, *A Midsummer Nights Dream*, and *The Tempest* (GreenStage); and *SHOGGOTHS On The Veldt* (The Rogues Gallery). Thanks and love to Daniel.

### Rex Kesner

#### Costume Designer - Backyard Bard

Rex moved to Seattle to pursue the medical field, but after many years found her creative vein in the enormous world of garment creation and never looked back. Hoping to move into theater full time, she is currently a technical assistant and production sewer by day, and budding costume designer by night. This is her second year with GreenStage. Her favorite costume styles include retro, dystopian, and post apocalyptic.

### Natalie Gress Technical Director / Set Designer

See *Merry Wives* bios

### Gail Wamba

#### Prop Designer

Gail is thrilled to design props for GreenStage again after taking a spin with the *Hard Bard: The Duchess of Malfi* earlier this year. Gail brings a lifetime of laughter, creativity and performance experience to her work. Recent design work includes film and stage props, choreography for *The Wild Blossoms*, and developing *Osric's Imaginarium*. Upcoming performances include belly dance as Javahar; Last Leaf Productions' 2016 tour of *Henry IV, Part I* and *Loves Labours Lost*; and as 'Hebe' in the new rock opera *Aleister Crowley's The Rite of Jupiter*, opening October 2016. Offstage, Gail can be found developing code, hiking, gardening and other things that let one wander into the weeds. Thank you for supporting local art and artists. Thanks to GreenStage for this opportunity. Love to Josh, Rufus and Serenity, and our family!

### Ryan Spickard

#### Fight Choreographer

Ryan is a BFA graduate from Cornish College of the Arts and is a working fight choreographer and actor in the Seattle area. Ryan has performed with various local theaters such as the Seattle Shakespeare Company, Book-It Repertory Theater, GreenStage, Balagan Theater, Theater Schmeater and others. Involved in

## STAFF

Stage Combat since 1993 with the Society of American Fight Directors, he has also trained with the United Stuntmen Association and holds 1st degree black belts in Goju-Ryu Karate and Tae Kwon Do. Ryan is Co-Artistic Director of "Performers' Forge", a theater company dedicated to the education and performance of Stage Combat.

### **Erin Mettling** Lead House Manager

*With happiness and pride overflowing,  
And excitement that is truly boundless:  
Erin returns to parks that are showing  
The plays performed with love and great  
prowess.  
She comes again to sell the merchandise,  
And direct the folks towards the hidden  
loos;  
To raise a voice in bits of paradise,  
And share programs for people to peruse.  
She'll warn you of what food thieves actors  
are,  
And insist you sit a tad bit closer.  
She'll travel here and there and pretty far,  
To do the job that, honestly, chose her.  
Celebrating her fourth GreenStage season,  
She wrote a sonnet bio for...reasons.*

### **Erin Day** (Artistic Director)

See Merry Wives Bios

### **Ken Holmes** (Managing Director)

See Production Team Bios

### **Eve Hammond** (Education Director)

For more than twenty years, Eve Hammond has directed, educated and taught both Theatre Arts and Integrative Arts throughout the Seattle/Mercer Island/Bothell and Woodinville area schools and theatres. Working for Seattle Children's Theatre, Youth Theatre Northwest and both Northshore and Seattle School Districts, she created and managed student theatre companies serving families with multiple ranges of kids from preschool to college. She was the Education Coordinator for the Washington Shakespeare Company in Olympia, WA, helping to implement their popular Apprentice program in which high school actors and technicians worked alongside adults in real-world theatre experiences. In her spare time, she was the Artistic Director of Vagabond Productions and Northshore Networks Youth Theatre as well as being on the Washington State Board of Education teams for creating and implementing theatre arts standards to all teachers. She has a lovely husband and two talented and creative kids plus a dog and assorted cats. She loves her clan full of friends and looks forward to bringing her enthusiasm for teaching Shakespeare to young people through the open door of GreenStage.

### **Greg Scheiderer** (Marketing Director)

Greg is in his fifth summer as marketing director for GreenStage. He is a Shakespeare lover who is just four plays shy of viewing the entire canon, and he expects to check off *Timon of Athens* this summer, leaving just the *Henry VI* plays on the list. In addition to theatre, Greg enjoys stargazing and writes the blog *SeattleAstronomy.com*. His other interests include baseball, music, writing, reading, gardening, baking bread, and wine. He and his wife Cynthia live in West Seattle with their cats Archie and Theodolinda. Greg is a freelance writer with more than 30 years of experience in journalism, media relations, public relations, and public policy advocacy.

### **Michelle Rodriguez** (Production Manager)

This is Michelle's sixth year working with GreenStage and her fourth year as Production Manager. In years past she has stage managed for GreenStage on *Taming of the Shrew* (2012), *Hamlet* (2008) and *Richard III* (2007). Since receiving her BA in theatre at the University of Southern California, she has worked at theatres in and around Los Angeles, Portland, and Seattle. Local haunts include Burien Actors Theatre, Centerstage, ReAct, SecondStory Repertory, and Taproot Theatre. Love and thanks to her husband, Thomas, and their adorable new baby, Olivia.

### **Meredith Armstrong** (Facilities Manager)

See Cymbeline Bios



## YES! I want to support free theatre!

CREDIT CARD DONATIONS ACCEPTED - See the House Manager for details.

Donate online at [www.greenstage.org](http://www.greenstage.org)

Name \_\_\_\_\_

Address \_\_\_\_\_

City \_\_\_\_\_ State \_\_\_\_\_ Zip \_\_\_\_\_

Phone \_\_\_\_\_ Email \_\_\_\_\_

### How do you want to be listed in our program?

☐ Use the name above ☐ Use this name \_\_\_\_\_

☐ I prefer to remain anonymous

### Donation amount:

☐ \$500 ☐ \$300 ☐ \$150 ☐ \$50 ☐ \$25 ☐ Other \$ \_\_\_\_\_

Make checks payable to  
GreenStage

Mail completed form to:  
GreenStage • PO Box 9594  
Seattle, WA 98109

## DOUBLE YOUR DONATION!

Ask your employer  
about corporate  
matching!



## Contributors - Donations received between 6/1/2015 – 6/30/2016

### \$5,000 and above

4 Culture  
KUOW 94.9 FM\*  
Seattle Arts and Culture  
Seattle Parks and Recreation\*

### \$1,000 - \$4,999

Expedia Matching Gifts

### \$500 - \$999

Boeing Matching Gifts  
Alice Sieger and Peter Burford  
Nicole A. Vernon  
Jewel Vuong  
Branch Wrzeszcz

### \$300 - \$499

Microsoft Matching Funds  
Harold and Lynne Armstrong  
Michael Froebe  
Megan Pursell  
Emily Riesser and Thomas Sunderland  
Jessica Wood

### \$150 - \$299

Massy and Sally Anaya  
Meredith Armstrong and Erik Swanson  
Chase Coburn  
Mark Hamann  
Ron Meckler  
Robert Penhale  
Grace Reamer  
Paul Rich  
Anne Sakrison  
Gena Shurtleff  
Jerry Watt  
Kathleen Whitson

### \$50 - \$149

Anonymous (3)  
American Endowment Foundation  
Benevity Causes  
Google Matching Gifts  
Emeron Bachhuber  
Carole Barrer and Lorrie Wallace  
Denise Cassidy  
Irene Choi  
Kerry Christianson  
Carl DaVault  
Dreana Day  
Stephen DeSanto  
Rob Detzner  
Beth Didomenico  
Alicia Doyl  
Kathryn Dugaw

Krista Erickson  
Susan Ferrell  
William Fugate  
Lawrence Garcia  
Alan Gibbs  
Lena Hart-Bundy  
Sue Hartman  
Samara Hoag  
Ken, Lisa and Ruby Holmes  
Christina Hughes Barredo  
Teri Lazzara  
Harold Marvin  
Sean McCain  
Amelia Meckler-Bowers  
Stephen Montsaroff  
Susan Moser  
Kerry and Lisa Peterson  
Dan and Cheri Portman  
Kathleen Randall  
Eric and Karen Richter  
Rebecca Ripley  
Cynthia Rodriguez  
Joanne Schaffer  
Greg and Cynthia Scheiderer  
Eric and Tera Schreiber  
Gianni Truzzi  
Nona Vernon  
Joan Voorheis  
James Walseth  
Robin Whipple  
Kirsten Wilhelm  
LaVerne Woods  
Richard Wurdack  
Clem and Monica Zipp

### \$10 - \$49

Anonymous (1)  
Microsoft Alumni Foundation  
Tyraina Berry  
Nick and Linda Bonazza  
Elsbeth Bursell  
Richard Evans  
Peggy Ferber  
Peggy Foerch  
Thomas Gaffney  
Richard Goldfarb  
Carlton Gunn  
Colleen Gutierrez  
Marga Rose Hancock  
David Hsieh  
Lynne King  
Ginny Kreimer  
Ronald Krotoszynski  
Patrick Lennon  
Corey McDaniel  
Mary Metastasio  
Kristina Moravec  
Mandy Nelson  
Terry and Rhonda O'Brien  
Joshua Parkinson  
Ksenia Popova  
Michael Ramquist  
Erika Rusch  
Laurie Spidell  
James Suhr  
Vijay Sundaram  
Mary Ellen Walker  
Neva Welch  
Douglas Wills

\* In kind donations

GreenStage makes every effort to publish donation information accurately. This list represents donations made between 6/1/2015 and 6/30/2016. If your name is incorrect or missing, please contact GreenStage at 206-748-1551 or by email at [greenstage@greenstage.org](mailto:greenstage@greenstage.org).



Here's a special shout out to the donors who gave through Seattle Foundation's 2016 GiveBIG campaign. GreenStage received over \$6,000 in donations and matching funds. THANK YOU for Giving Big!

Anonymous (4)  
Massy and Sally Anaya  
Harold and Lynne Armstrong  
Meredith Armstrong and Erik Swanson  
Emeron Bachhuber  
Tyraina Berry  
Elsbeth Bursell  
Irene Choi  
Chase Coburn  
Carl DaVault  
Rob Detzner  
Alicia Doyl  
Kathryn Dugaw  
Krista Erickson  
Richard Evans  
Susan Ferrell  
Peggy Foerch  
William Fugate  
Lawrence Garcia  
Alan Gibbs

Richard Goldfarb  
Marga Rose Hancock  
Lena Hart-Bundy  
Sue Hartman  
Ken, Lisa and Ruby Holmes  
David Hsieh  
Christina Hughes Barredo  
Lynne King  
Ginny Kreimer  
Ronald Krotoszynski  
Teri Lazzara  
Harold Marvin  
Sean McCain  
Corey McDaniel  
Ron Meckler  
Amelia Meckler-Bowers  
Mary Metastasio  
Stephen Montsaroff  
Kristina Moravec  
Mandy Nelson  
Kerry and Lisa Peterson

Megan Pursell  
Michael Ramquist  
Paul Rich  
Rebecca Ripley  
Cynthia Rodriguez  
Erika Rusch  
Greg and Cynthia Scheiderer  
Eric and Tera Schreiber  
Laurie Spidell  
Gianni Truzzi  
Nicole A Vernon  
Joan Voorheis  
Jewel Vuong  
Mary Ellen Walker  
James Walseth  
Jerry Watt  
Robin Whipple  
Kathleen Whitson  
Kirsten Wilhelm  
LaVerne Woods

SUN	M	T	W	THU	FRI	SAT
<b>2016 Summer</b> go see a play <b>PERFORMANCE CALENDAR</b> <b>FREE</b> • donations joyfully accepted						
JULY 2014						
10 <b>CYMBELINE</b> - 2 pm <b>Twelfth Night</b> - 4 pm <b>Pericles</b> - 5 pm Volunteer Park <b>SOTF</b> <b>MERRY WIVES</b> - 5 pm Marvista Park	11	12	13	14 <b>MERRY WIVES</b> - 7 pm Lower Woodland Park	15 <b>CYMBELINE</b> - 7 pm Lower Woodland Park <b>Pericles</b> - 7 pm Wallingford Playfield	16 <b>CYMBELINE</b> - 3 pm <b>MERRY WIVES</b> - 7 pm Lower Woodland Park <b>DOUBLE FEATURE</b> <b>Twelfth Night</b> - 7 pm Wallingford Playfield
17 <b>MERRY WIVES</b> - 3 pm <b>CYMBELINE</b> - 7 pm Woodland Park <b>DOUBLE FEATURE</b> <b>Twelfth Night</b> - 3 pm <b>Pericles</b> - 4:30 pm Salmon Bay Park <b>DOUBLE FEATURE</b>	18	19	20	21 <b>MERRY WIVES</b> - 7 pm Lincoln Park	22 <b>CYMBELINE</b> - 7 pm Lincoln Park <b>Twelfth Night</b> - 7 pm Powell Barnett Park	23 <b>CYMBELINE</b> - 7 pm Dottie Harper Park <b>MERRY WIVES</b> - 7 pm Lincoln Park <b>Pericles</b> - 7 pm Powell Barnett Park
24 <b>CYMBELINE</b> - 3 pm Lincoln Park <b>MERRY WIVES</b> - 4 pm Lake Wilderness Park <b>Twelfth Night</b> - 3 pm <b>Pericles</b> - 4:30 pm David Rodgers Park <b>DOUBLE FEATURE</b>	25	26	27	28 <b>MERRY WIVES</b> - 7 pm Lynndale Park in Lynnwood	29 <b>CYMBELINE</b> - 7 pm Fall City Park in Fall City <b>MERRY WIVES</b> - 7 pm Camp Long <b>Pericles</b> - 7 pm Othello Park	30 <b>CYMBELINE</b> - 7 pm Camp Long <b>MERRY WIVES</b> - 7 pm Dottie Harper Park <b>Twelfth Night</b> - 7 pm Othello Park
AUGUST 2016						
31 <b>MERRY WIVES</b> - 3 pm Discovery Park <b>CHAT</b> <b>CYMBELINE</b> - 4 pm Lake Wilderness Park in Maple Valley <b>Twelfth Night</b> - 3 pm <b>Pericles</b> - 4:30 pm Sandel Park <b>DOUBLE FEATURE</b>	1	2	3	4 <b>CYMBELINE</b> - 7 pm Lynndale Park in Lynnwood <b>MERRY WIVES</b> - 7 pm Magnuson Park	5 <b>CYMBELINE</b> - 7 pm Magnuson Park <b>MERRY WIVES</b> - 7 pm Fall City Park <b>Twelfth Night</b> - 7 pm Cowen Park	6 <b>CYMBELINE</b> - 3 pm <b>MERRY WIVES</b> - 7 pm Magnuson Park <b>DOUBLE FEATURE</b> <b>Pericles</b> - 7 pm Cowen Park
7 <b>CYMBELINE</b> - 3 pm Discovery Park <b>CHAT</b> <b>MERRY WIVES</b> - 3 pm Magnuson Park <b>Twelfth Night</b> - 3 pm <b>Pericles</b> - 4:30 pm Delridge Park <b>DOUBLE FEATURE</b>	8	9	10	11 <b>MERRY WIVES</b> - 7 pm Volunteer Park	12 <b>CYMBELINE</b> - 7 pm Volunteer Park <b>Pericles</b> - 7 pm Dr. Blanche Laizzo Park	13 <b>Twelfth Night</b> - 1 pm <b>Pericles</b> - 2 pm <b>CYMBELINE</b> - 4 pm <b>MERRY WIVES</b> - 7 pm Volunteer Park <b>QUADRUPLE FEATURE</b>
<b>Twelfth Night and Pericles are part of Backyard Bard.</b> <b>SOTF</b> – Seattle Outdoor Theatre Festival <b>CHAT</b> – Chat with the cast after the show at Discovery Park.						

### GreenStage

Seattle's Shakespeare in the Park Company

[www.greenstage.org](http://www.greenstage.org) | 206-748-1551

PO Box 9594, Seattle, WA 98109

### Board of Directors

Peter Burford

Ken Holmes

Mandy Nelson

Janessa Jayne Styck

Nicole Vernon

Daniel Wood

### GreenStage Staff

Artistic Director – Erin Day

Managing Director – Ken Holmes

Education Director – Eve Hammond

Marketing Director – Greg Scheiderer

Production Manager – Michelle Rodriguez

Facilities Manager – Meredith Armstrong

Publication Design by Devlin Donnelly

[www.devlindonnelly.com](http://www.devlindonnelly.com)

[greenstage.org](http://greenstage.org) | 206-748-1551



[facebook.com/GreenStageSeattle](https://facebook.com/GreenStageSeattle)



[@Green\\_Stage](https://twitter.com/Green_Stage)

All dates, times, and locations subject to change.